

# WEEKLY OUTLOOK FOR APR. 3<sup>RD</sup> – APR. 9<sup>TH</sup>

Brought to you by:

the Student Laboratory

Nick Althoff, Hailey Schepers, Justin Eddy, Jacob Knaebel, and Gavin Frizzell

With Oversight by:

Marty Foreman and John Kruse

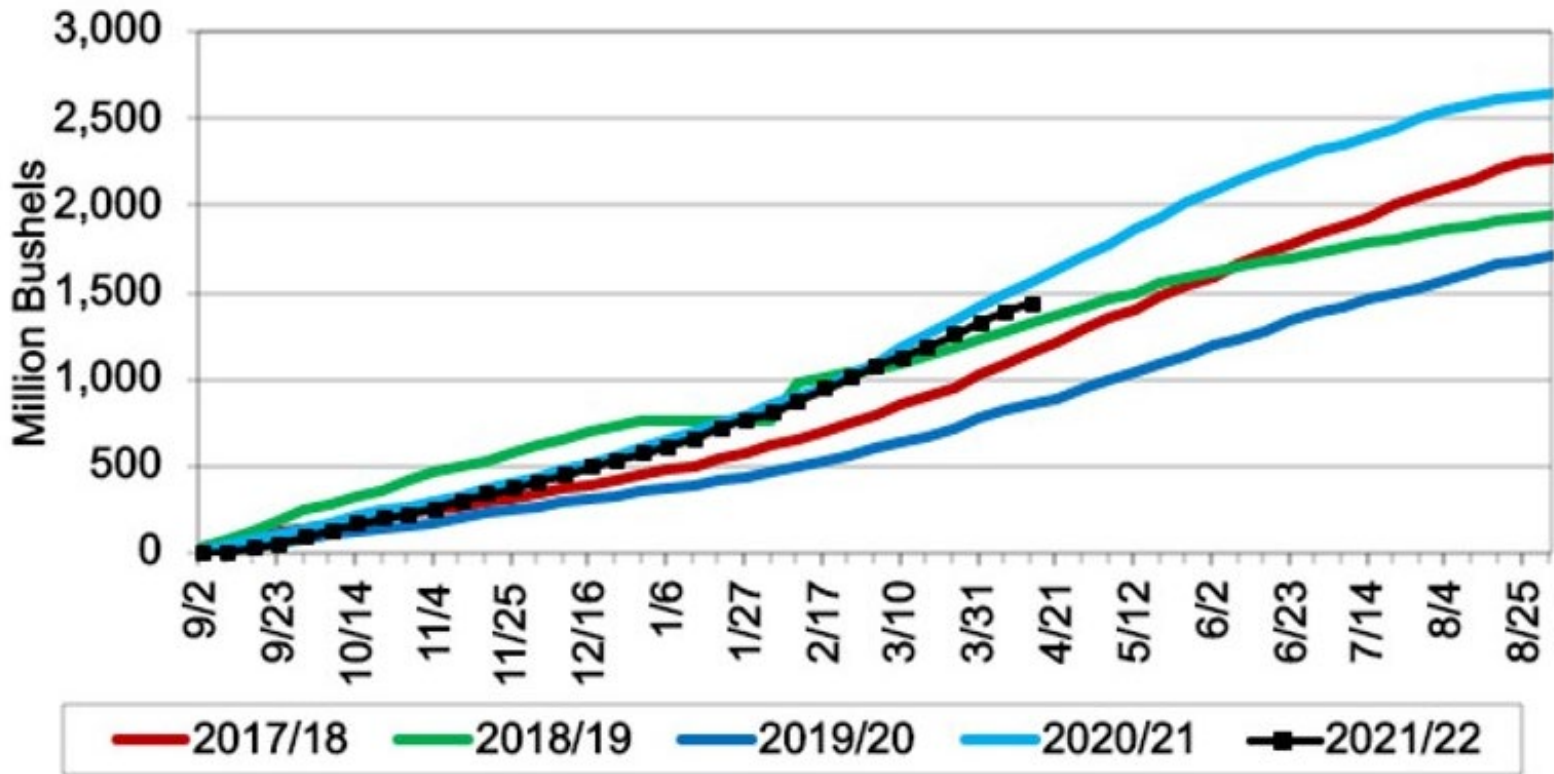
Funded by:

The Food and Agricultural Policy Research Institute (FAPRI)

Division of Applied Social Sciences

College of Agriculture, Food and Natural Resources

# Accumulated US Corn Exports to All Countries

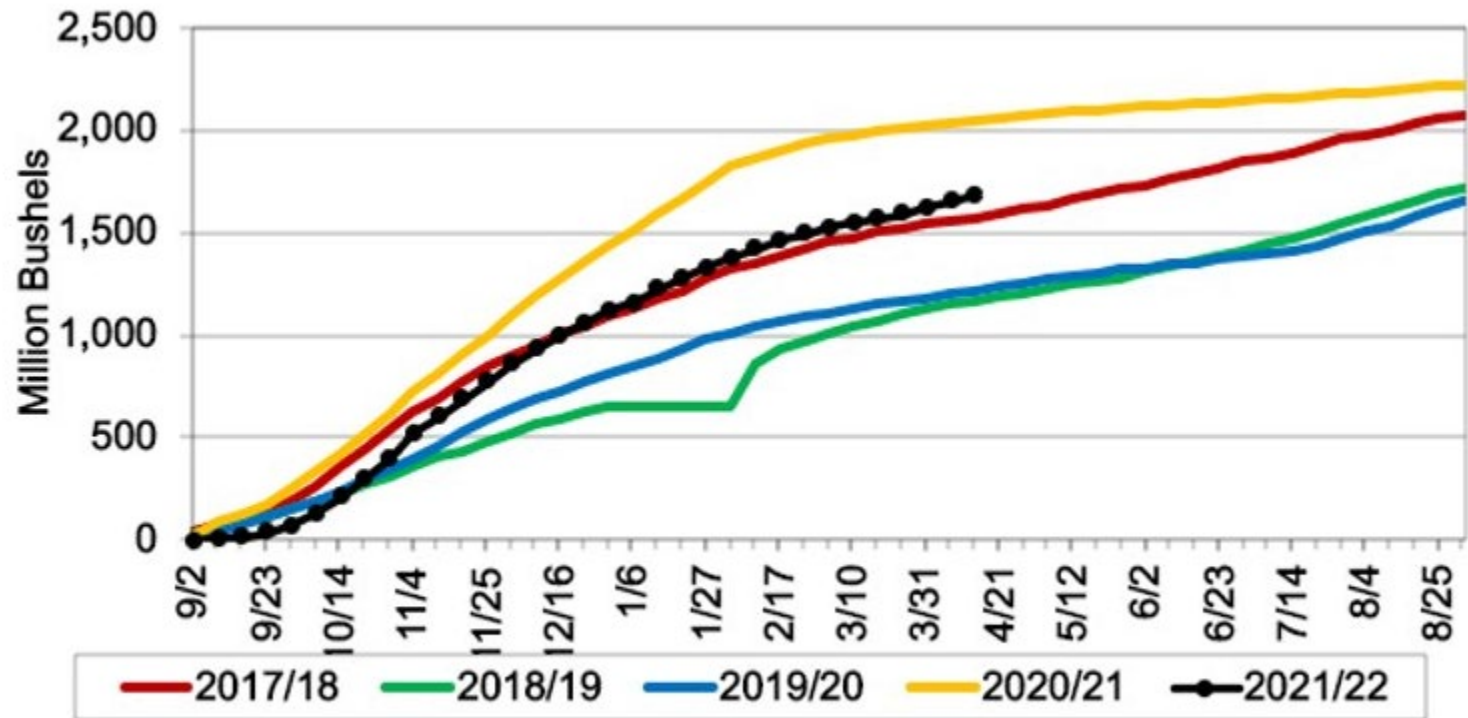


# Corn Export Summary

- Calculation: 39.368 bushels per MT
  - - Net Sales for 2021/2022 were up 23% from the previous week, but down 44% from the prior 4-week average at 30.8 MBU.
  - - Increases were largely credited to Mexico (10.3 MBU) and Japan (8.5 MBU).
  - - Net Sales for 2022/2023 totaled 5.7 MBU and were primarily for unknown destinations (5.4 MBU).
  - - Exports were at 64.3 MBU, down 13% from the previous week, but up 2% from the prior 4-week average.
  - - The destinations were primarily to China (18.1 MBU), Mexico (12.9 MBU), and Japan (7.1 MBU).



# Accumulated US Soybean Exports to All Countries

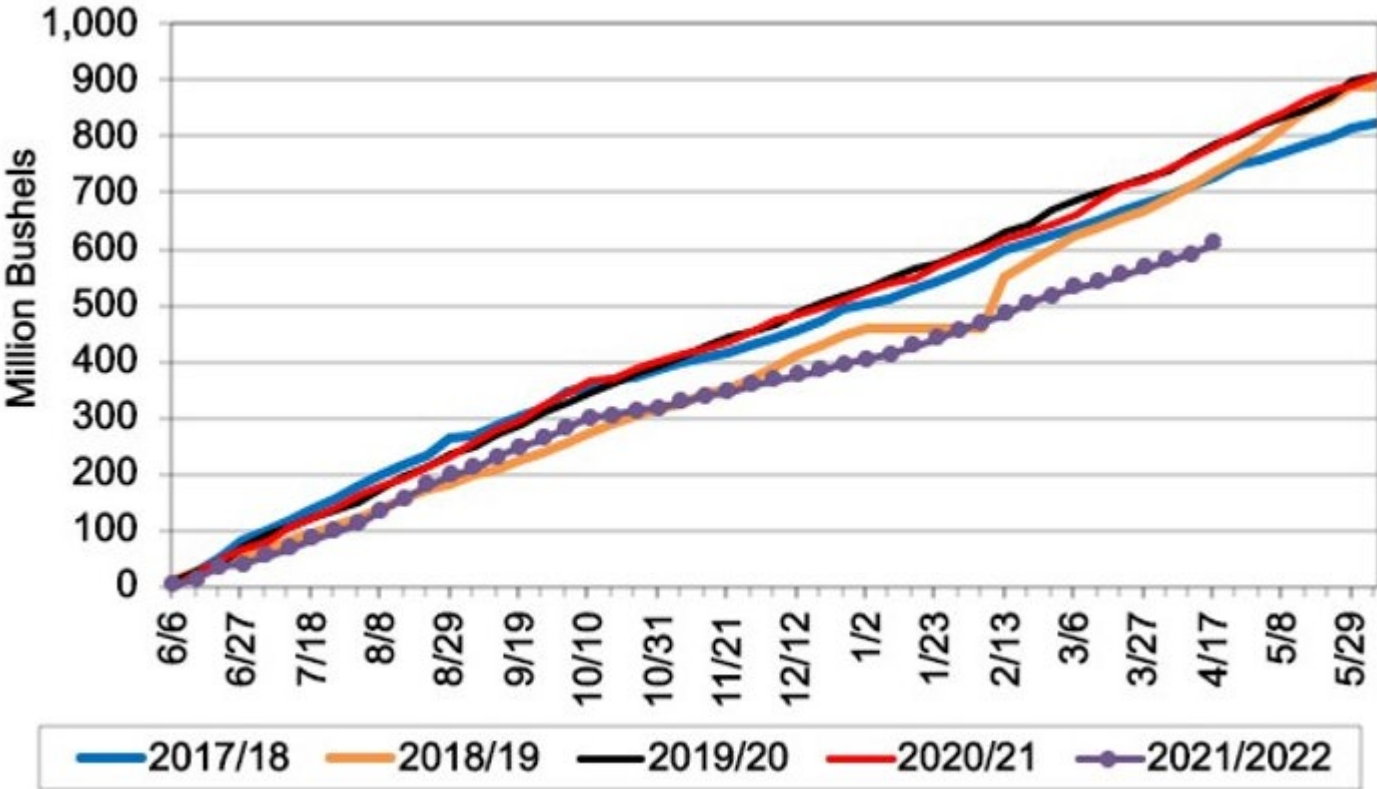


# Soybean Export Summary

- Calculation: 36.74 bushels per MT.
  - - Net Sales for 2021/2022 totaled 29.4 MBU, down 39% from the previous week, and 38% compared to the previous 4-week average.
  - - Increases are primarily accredited to China (16 MBU) and Egypt (5.7 MBU).
  - - Net Sales for 2022/2023 totaled 10.97 MBU and was primarily for Mexico (7.6 MBU).
  - - Exports were at 30.6 MBU, up 24% from the week prior, and 20% from the previous 4-week average.
  - - The primary destinations were China (16.9 MBU) and Egypt (5.7 MBU).
  - - For 2021/2022, the current exports for own account outstanding balance is 110,220 BU, all Canada.
  - - For 2021/2022, 2.5 MBU of soybeans for net sales and exports were reported late, the destination was China.



# Accumulated US Wheat Exports to All Countries

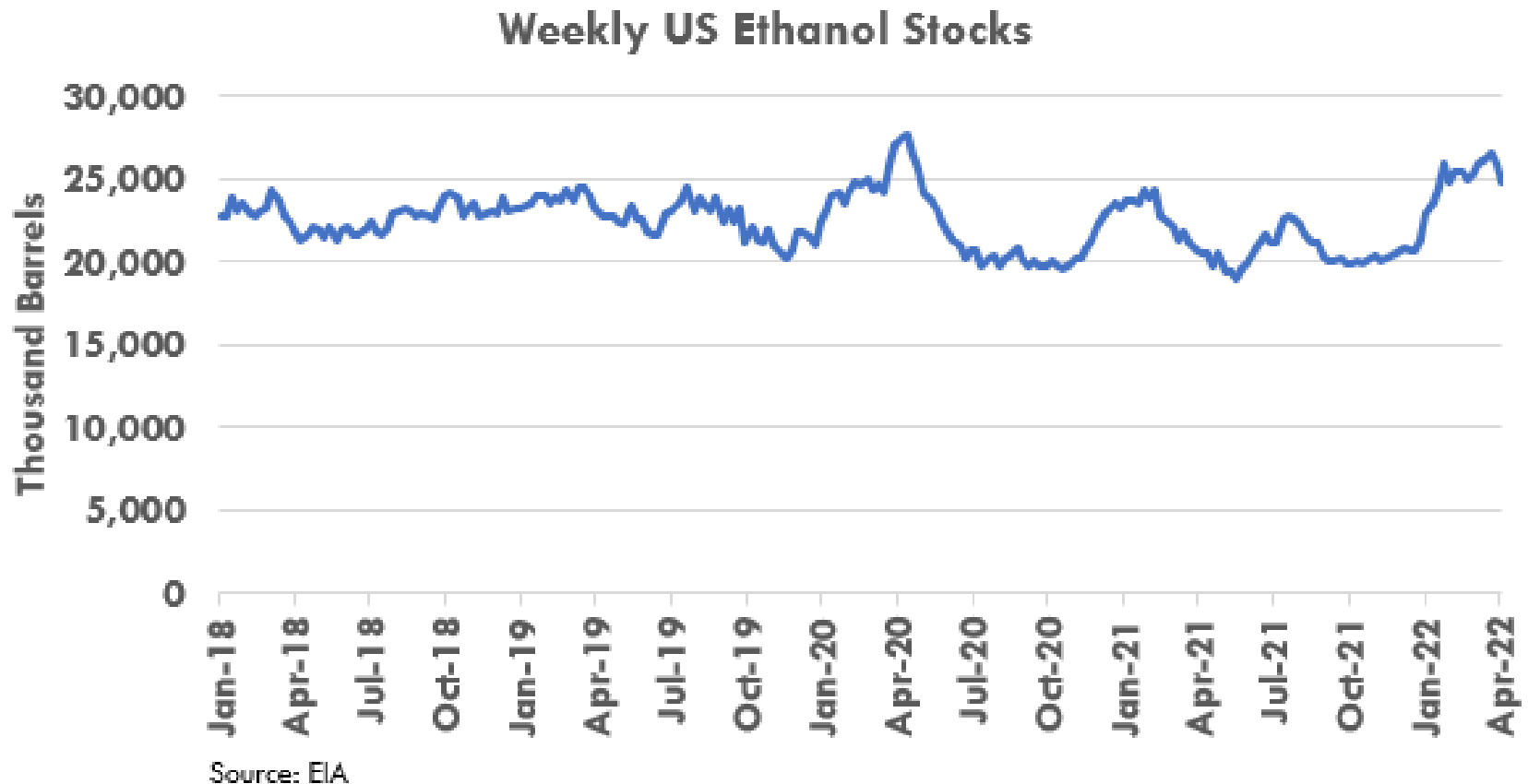


# Wheat Export Summary

- Calculation: 36.74 bushels per MT
  - - Net Sales for 2021/2022 were at 5.7 MBU, up 65% from the prior week, but down 11% from the previous 4-week average.
  - - Increases were primarily for Indonesia (2 MBU) and Taiwan (1.5 MBU).
  - - Net Sales for 2022/2023 totaled 8.2 MBU and were primarily for unknown destinations (2.8 MBU).
  - - Exports were down 11% from the previous week, and 8% from the prior 4-week average, totaling 11.4 MBU.
  - - Destinations were primarily for the Philippines (3.2 MBU) and Mexico (2.97 MBU).

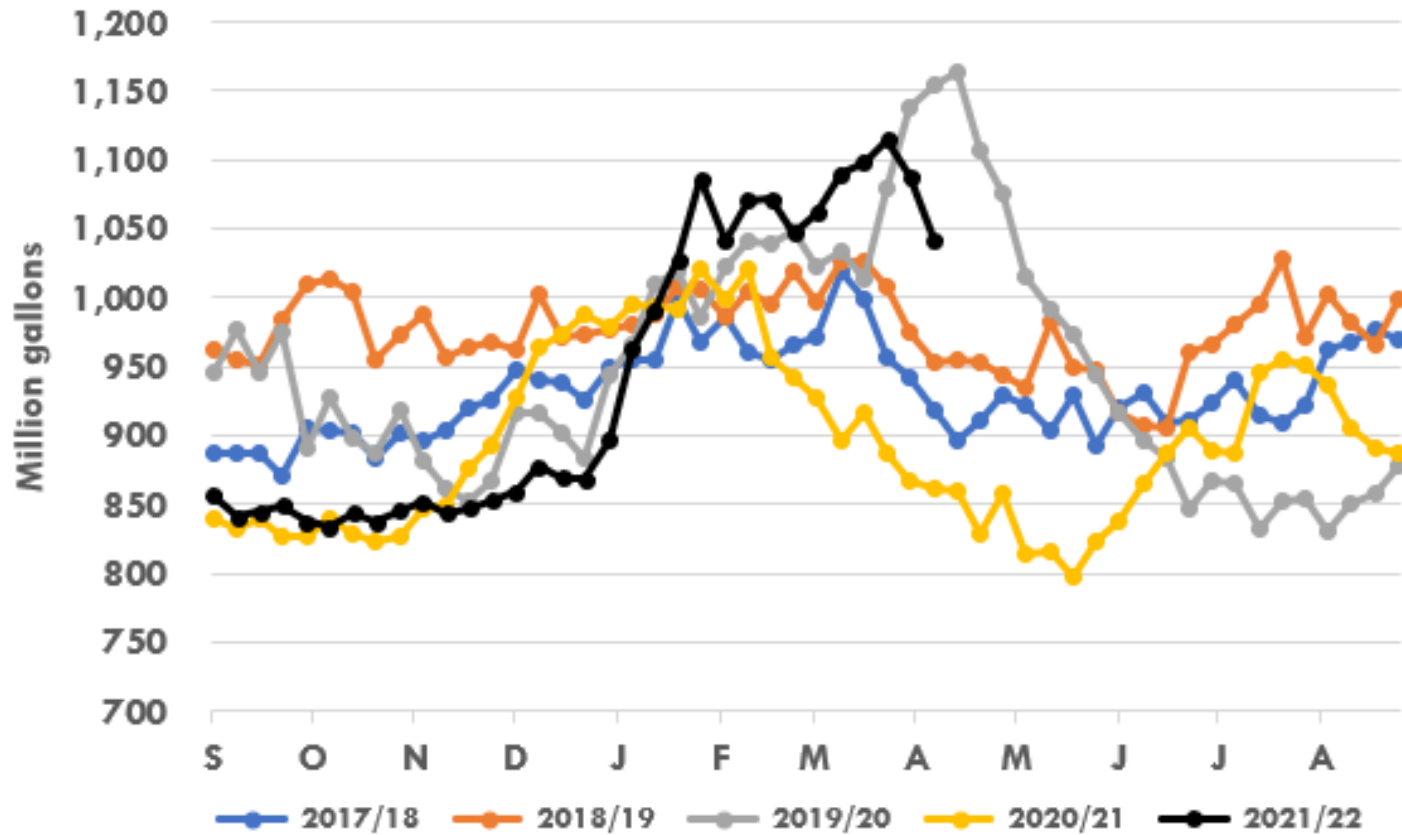


# Weekly Ethanol Stocks





# Weekly Ethanol Stocks

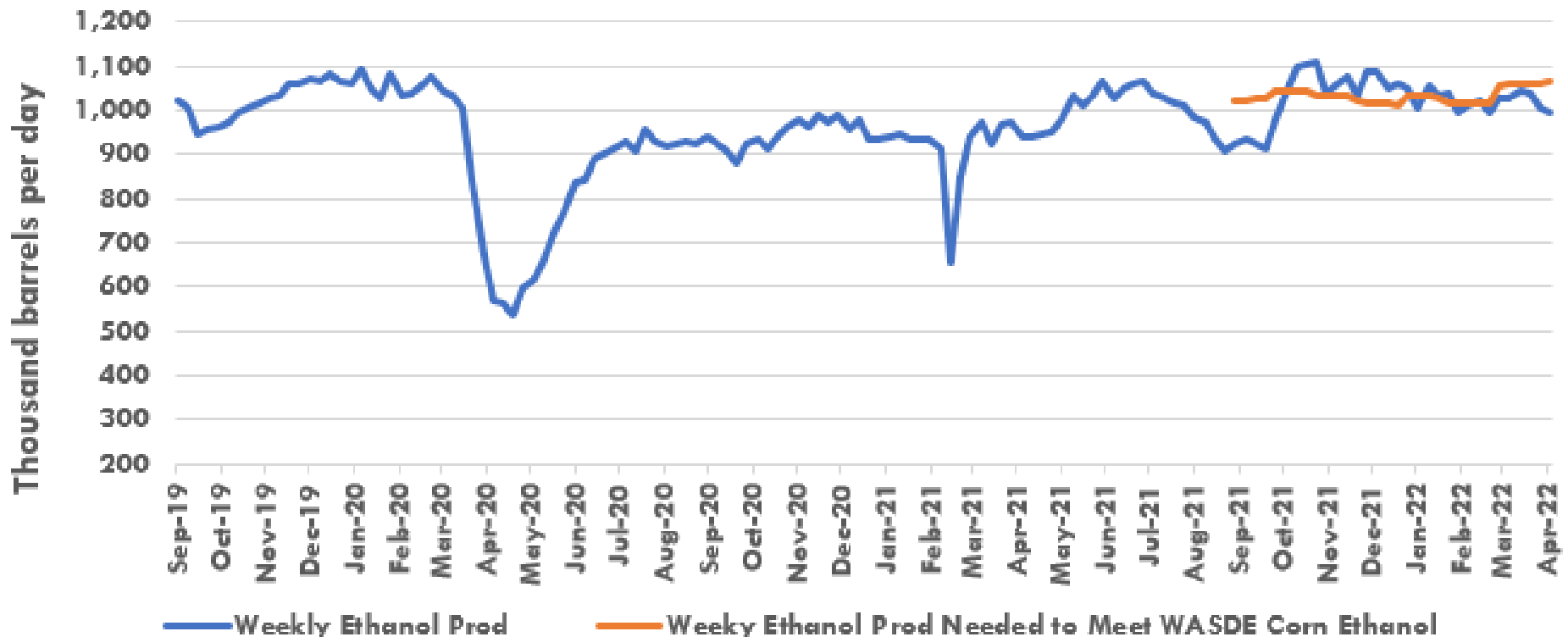


Source: EIA



# Weekly Ethanol Production

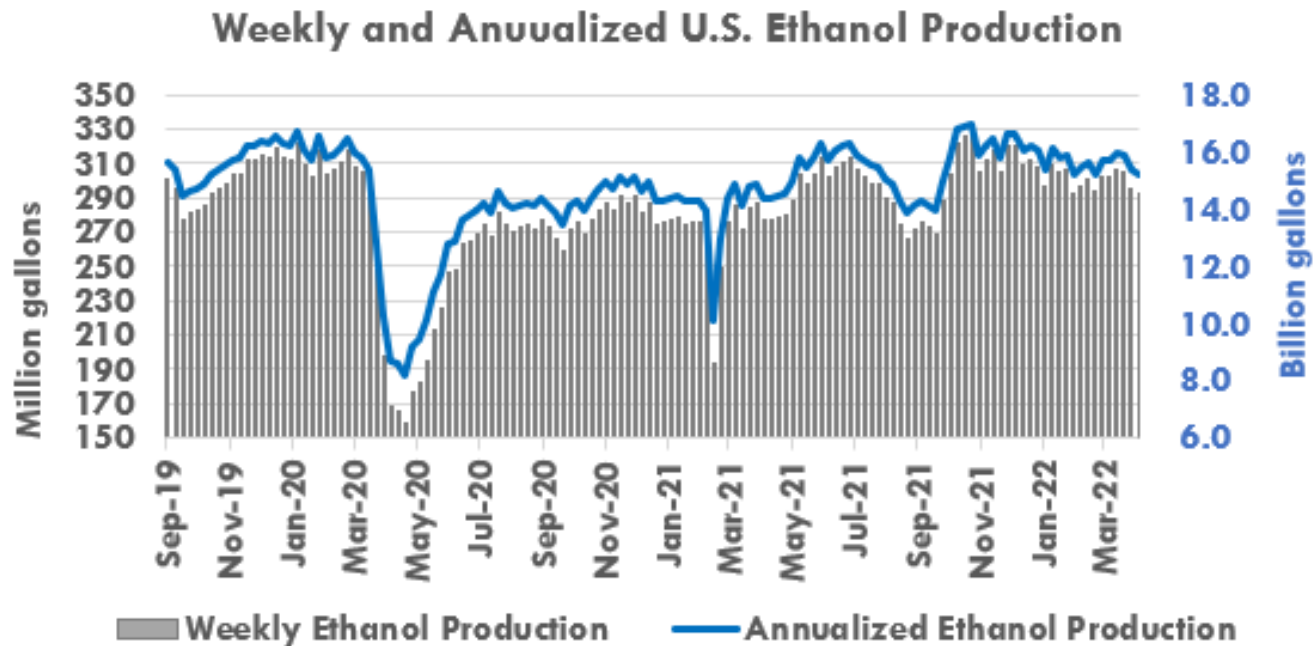
## Weekly U.S. Oxygenate Plant Production of Fuel Ethanol



Source: EIA



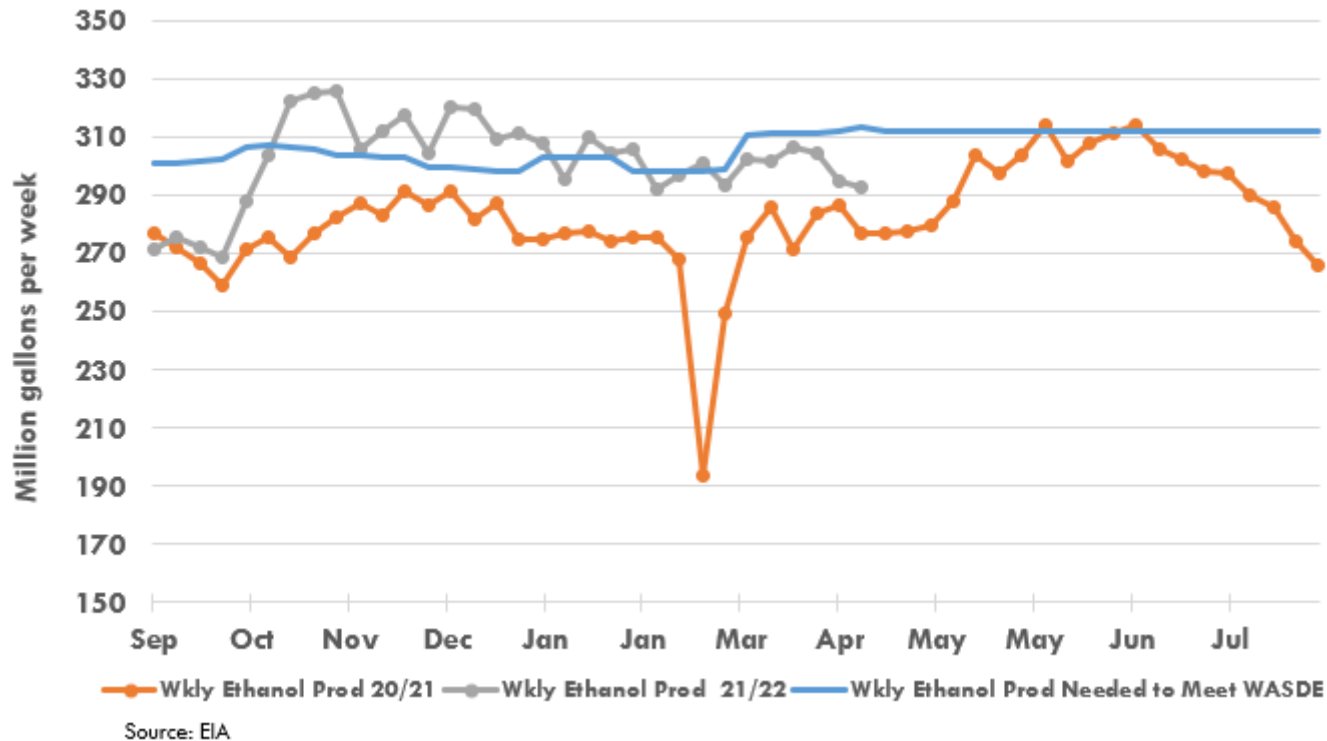
# Weekly Ethanol Production



Source: EIA



# Weekly Ethanol Production



# THANKS!

Brought to you by:

The Food and Agricultural Policy Research Institute (FAPRI)

Division of Applied Social Sciences

College of Agriculture, Food and Natural Resources

WEBSITE:

[www.fapri.missouri.edu](http://www.fapri.missouri.edu)