

# WEEKLY OUTLOOK FOR APR. 17<sup>TH</sup> – APR. 23<sup>RD</sup>

Brought to you by:

the Student Laboratory

Nick Althoff, Hailey Schepers, Justin Eddy, Jacob Knaebel, and Gaven Frizzell

With Oversight by:

Marty Foreman and John Kruse

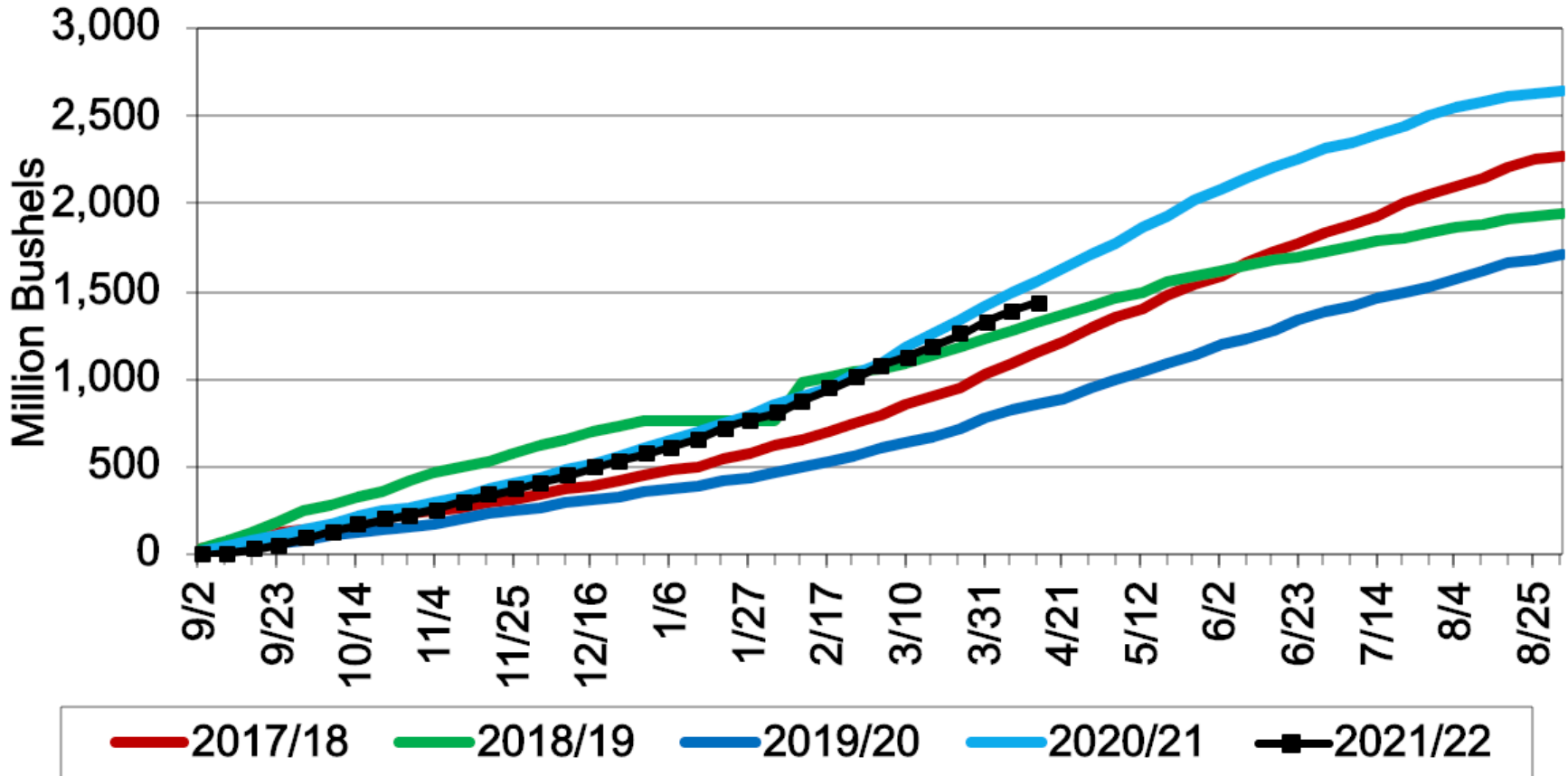
Funded by:

The Food and Agricultural Policy Research Institute (FAPRI)

Division of Applied Social Sciences

College of Agriculture, Food and Natural Resources

# Accumulated US Corn Exports to All Countries

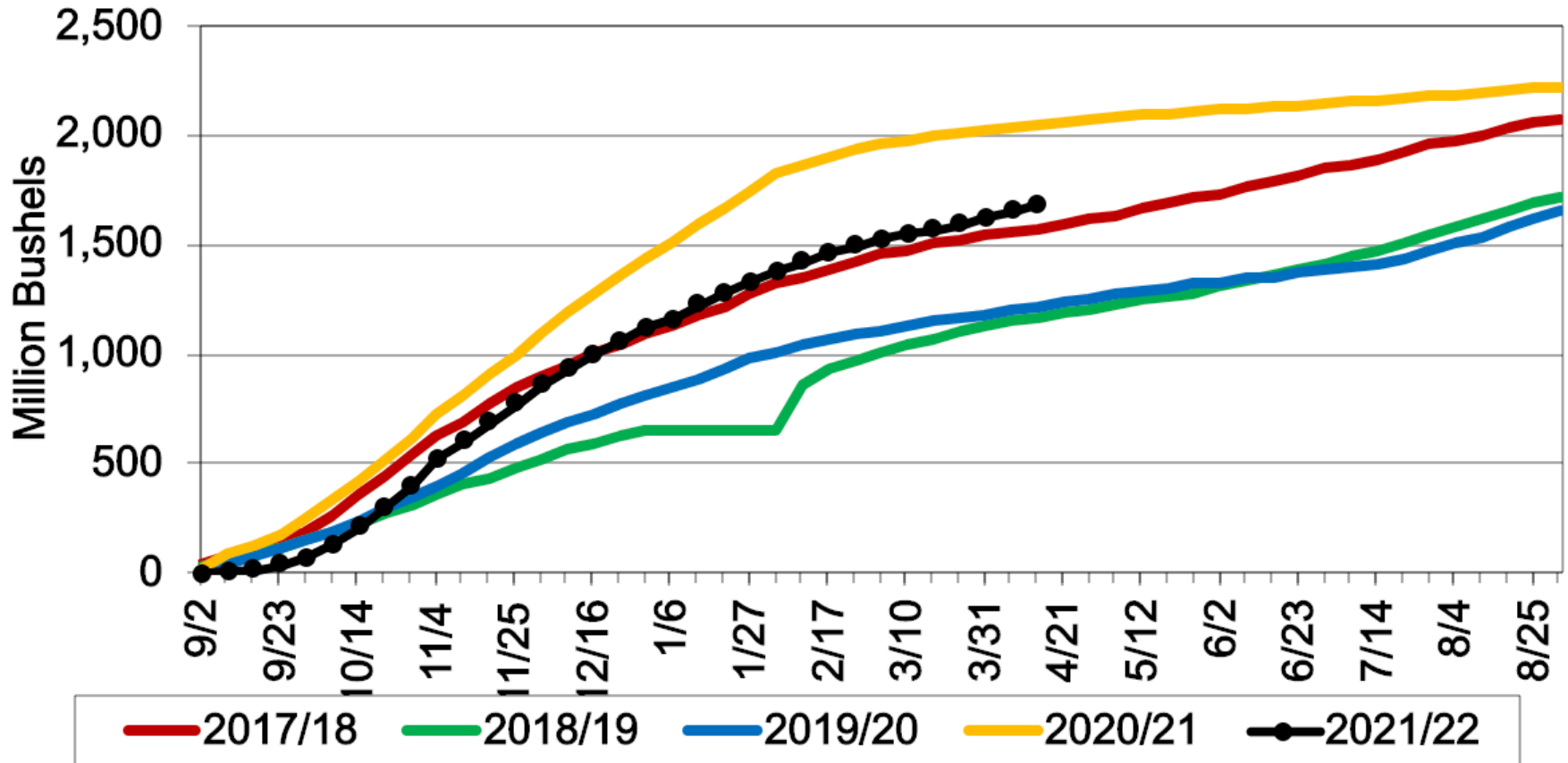


# Corn Export Summary

- Net Sales for 2021 /2022 were down 34% from the previous week, and 6% from the prior 4-week average at 34.6 MBU.
- Increases were largely credited to China (26.6 MBU) and South Korea (4.97 MBU).
- Net Sales for 2022/2023 totaled 15.3 MBU and was reported primarily for China (13.4 MBU).
- Exports were at 47.1 MBU, down 23% from the previous week, and 27% from the prior 4-week average.
- The destinations were primarily to China (15.8 MBU), Mexico (10.9 MBU), and Japan (4.1 MBU).
- Current outstanding balance for 2021 /2022 is 20.99 MBU and is primarily for unknown destinations (14.4 MBU).



# Accumulated US Soybean Exports to All Countries

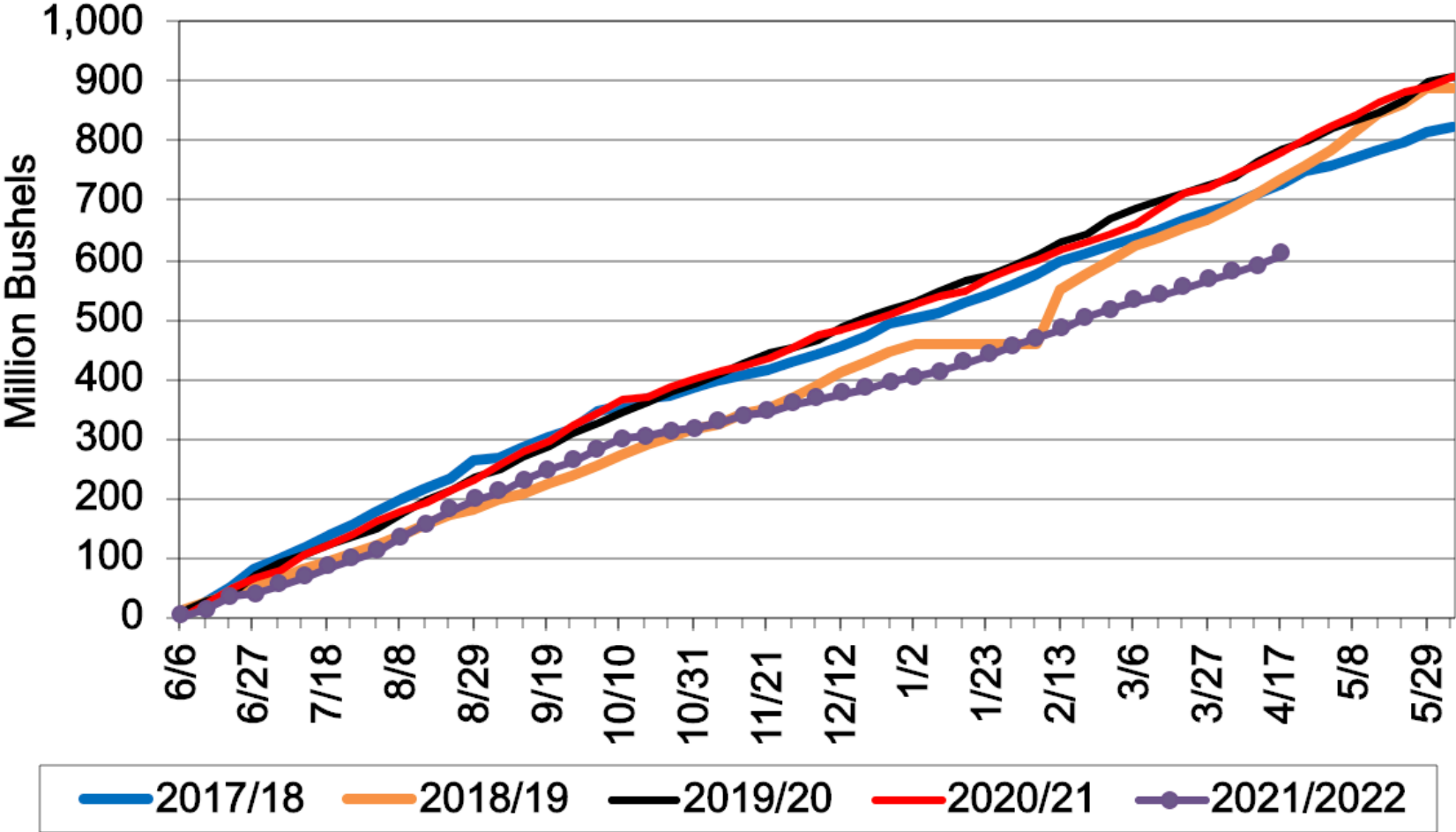


# Soybean Export Summary

- Net Sales for 2021/2022 totaled 16.9 MBU, down 16% from the previous week, and 39% compared to the previous 4-week average.
- Increases are primarily accredited to China (18.2 MBU) and Indonesia (2.98 MBU).
- Net Sales for 2022/2023 totaled 45.6 MBU and was primarily for China (24.6 MBU).
- Exports were at 32.7 MBU, up 10% from the week prior, and 27% from the previous 4-week average.
- The primary destinations were China (10.8 MBU) and Indonesia (4 MBU).
- For 2021/2022, the current exports for own account outstanding balance is 110,220 BU, all Canada.



# Accumulated US Wheat Exports to All Countries



# Wheat Export Summary

- Net Sales for 2021/2022 were at 966,262 BU, was at a marketing-year low, down 73% from the prior week, and 79% from the previous 4-week average.
- Increases were primarily for Mexico (3.3 MBU) and Haiti (991,980 BU).
- Net Sales for 2022/2023 totaled 8.8 MBU and were primarily for Nigeria (3.2 MBU).
- Exports were up 48% from the previous week, and from the prior 4-week average, totaling 18.5 MBU.
- Destinations were primarily for the Mexico (2.8 MBU) and Thailand (2.2 MBU).



# Weekly Ethanol Stocks

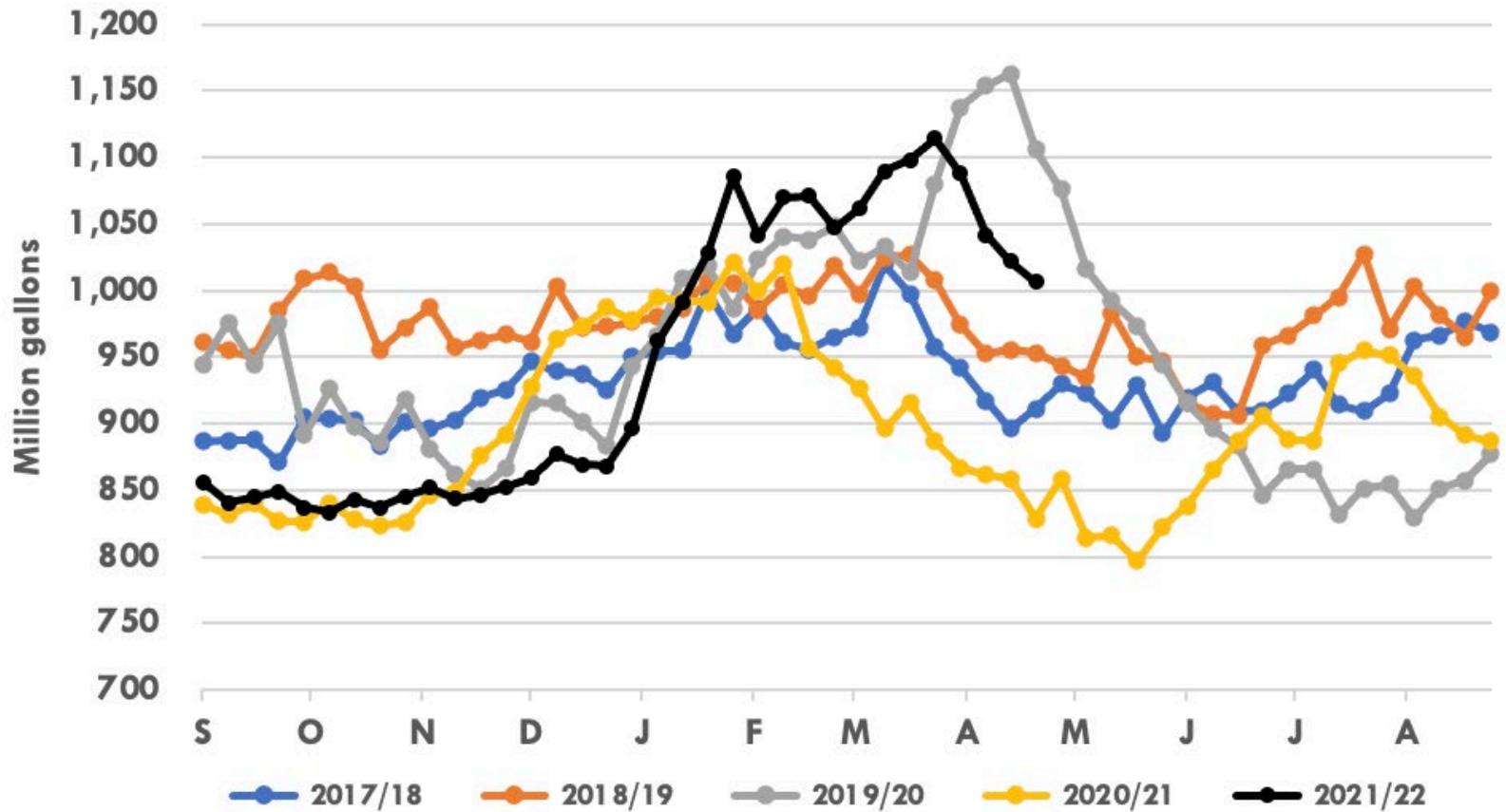


Source: EIA





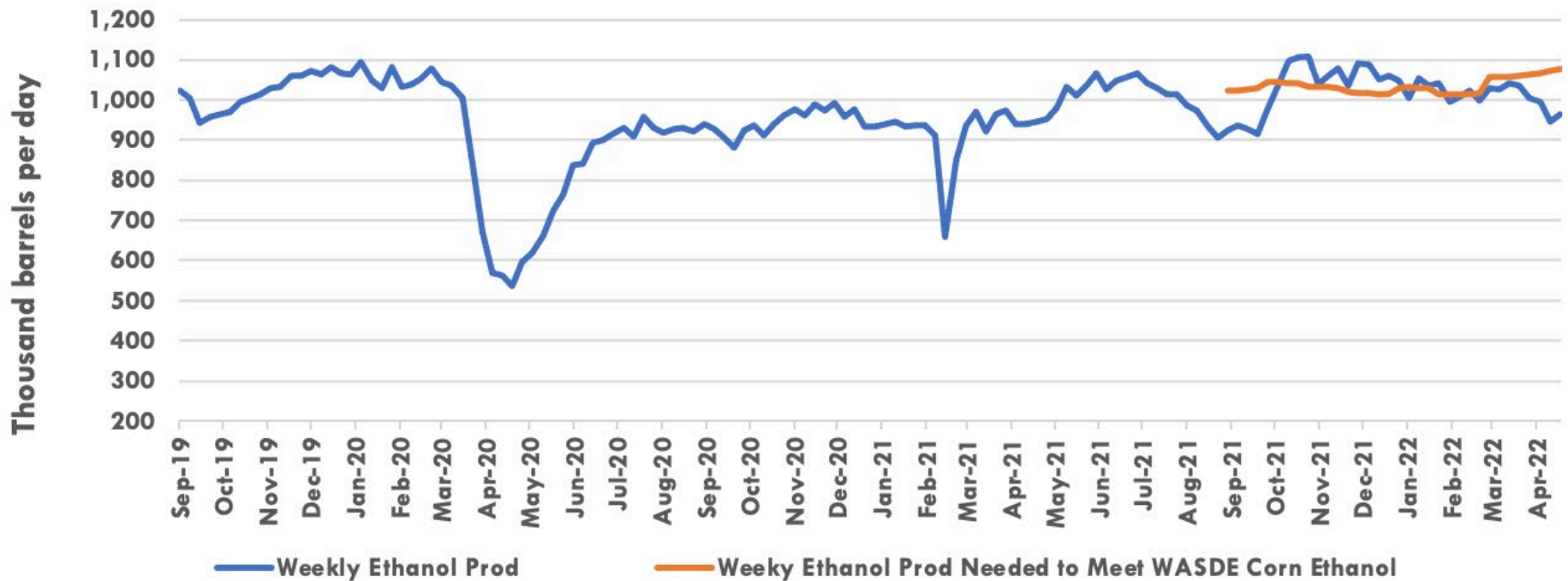
# Weekly Ethanol Stocks



Source: EIA



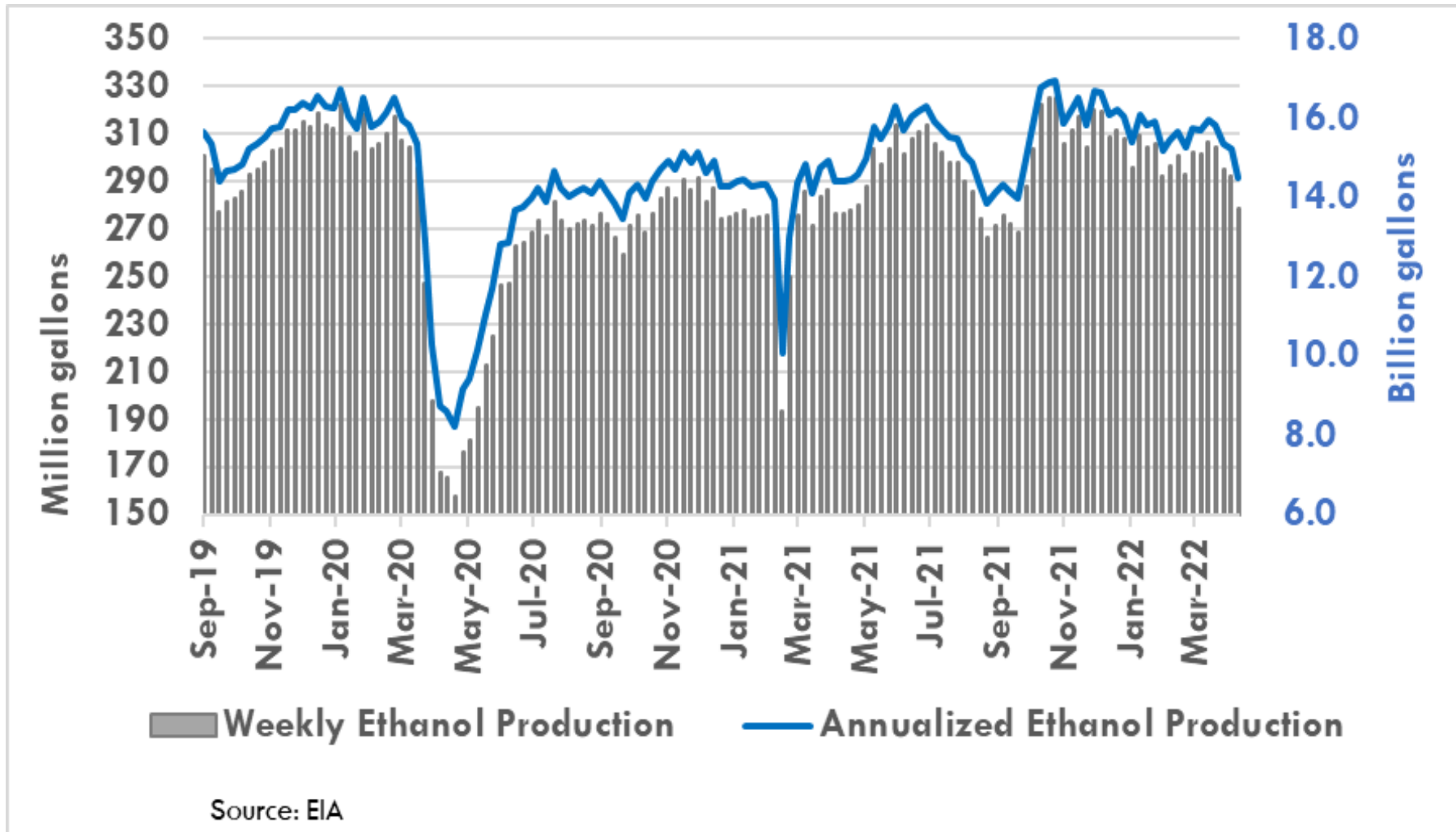
# Weekly Ethanol Production



Source: EIA



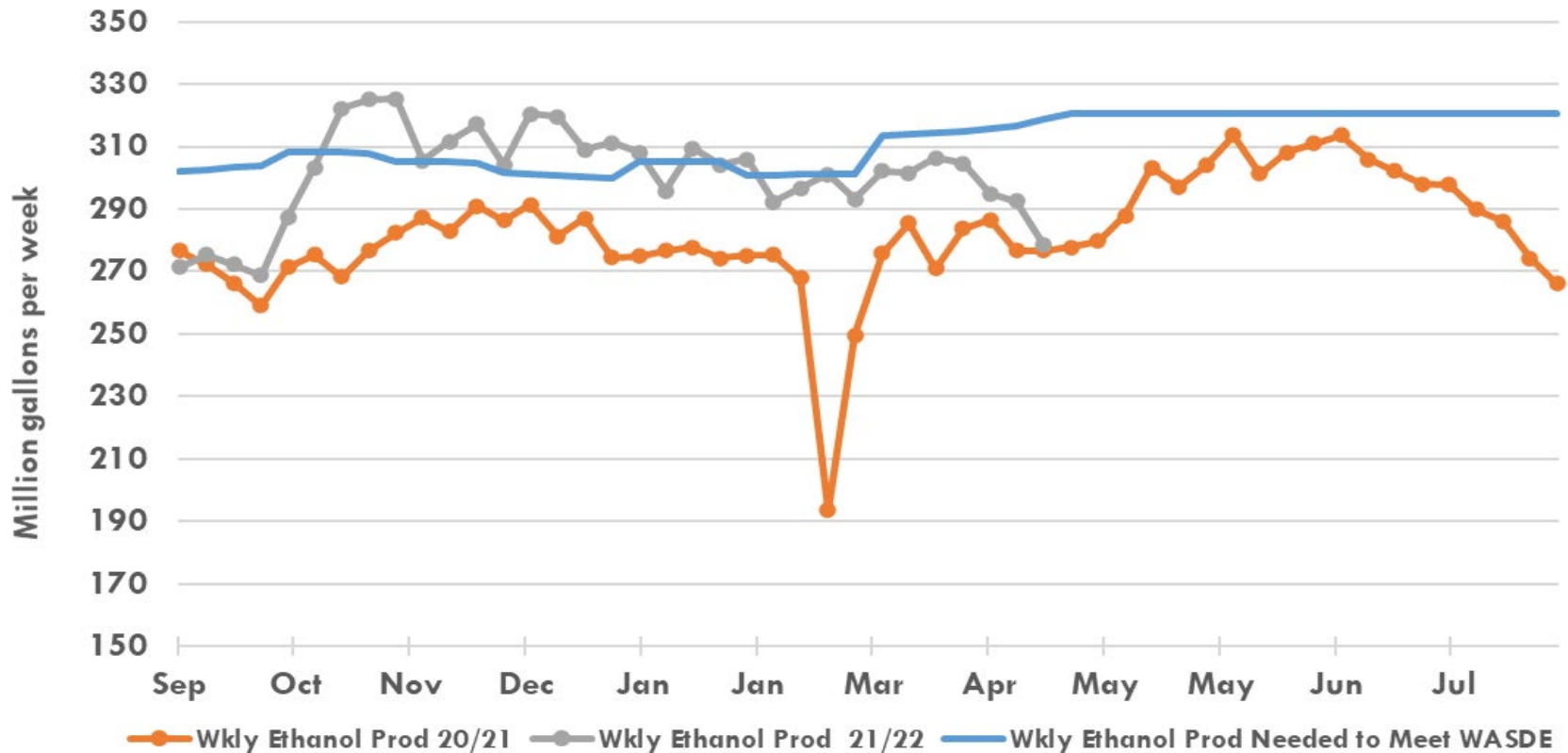
# Weekly Ethanol Production



Source: EIA



# Weekly Ethanol Production



Source: EIA



# THANKS!

Brought to you by:

The Food and Agricultural Policy Research Institute (FAPRI)

Division of Applied Social Sciences

College of Agriculture, Food and Natural Resources

WEBSITE:

[www.fapri.missouri.edu](http://www.fapri.missouri.edu)