

WEEKLY OUTLOOK FOR MAR. 6TH – MAR. 12TH

Brought to you by:

the Student Laboratory

Nick Althoff, Hailey Schepers, Justin Eddy, Jacob Knaebel, and Gavin Frizzell

With Oversight by:

Marty Foreman and John Kruse

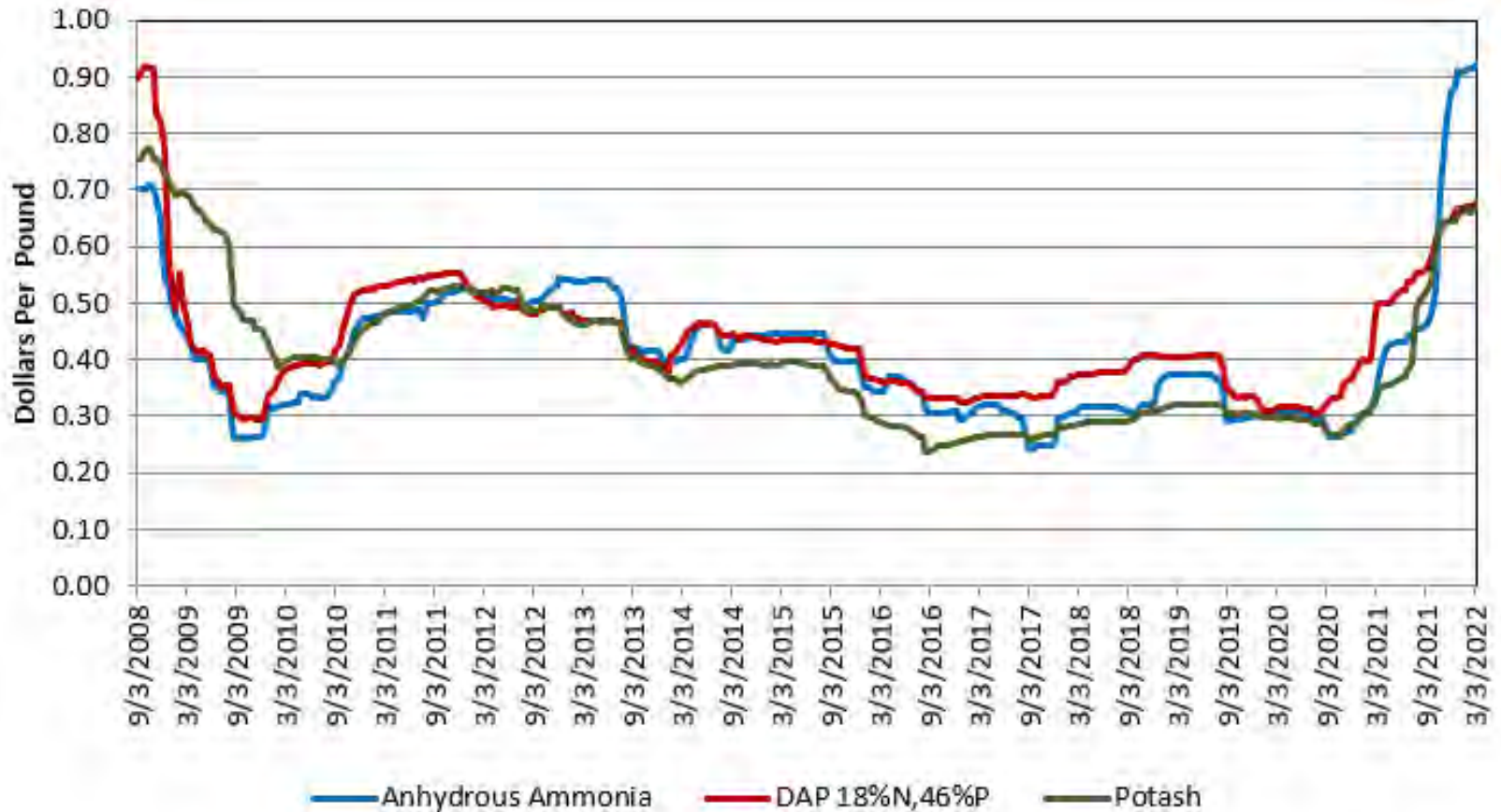
Funded by:

The Food and Agricultural Policy Research Institute (FAPRI)

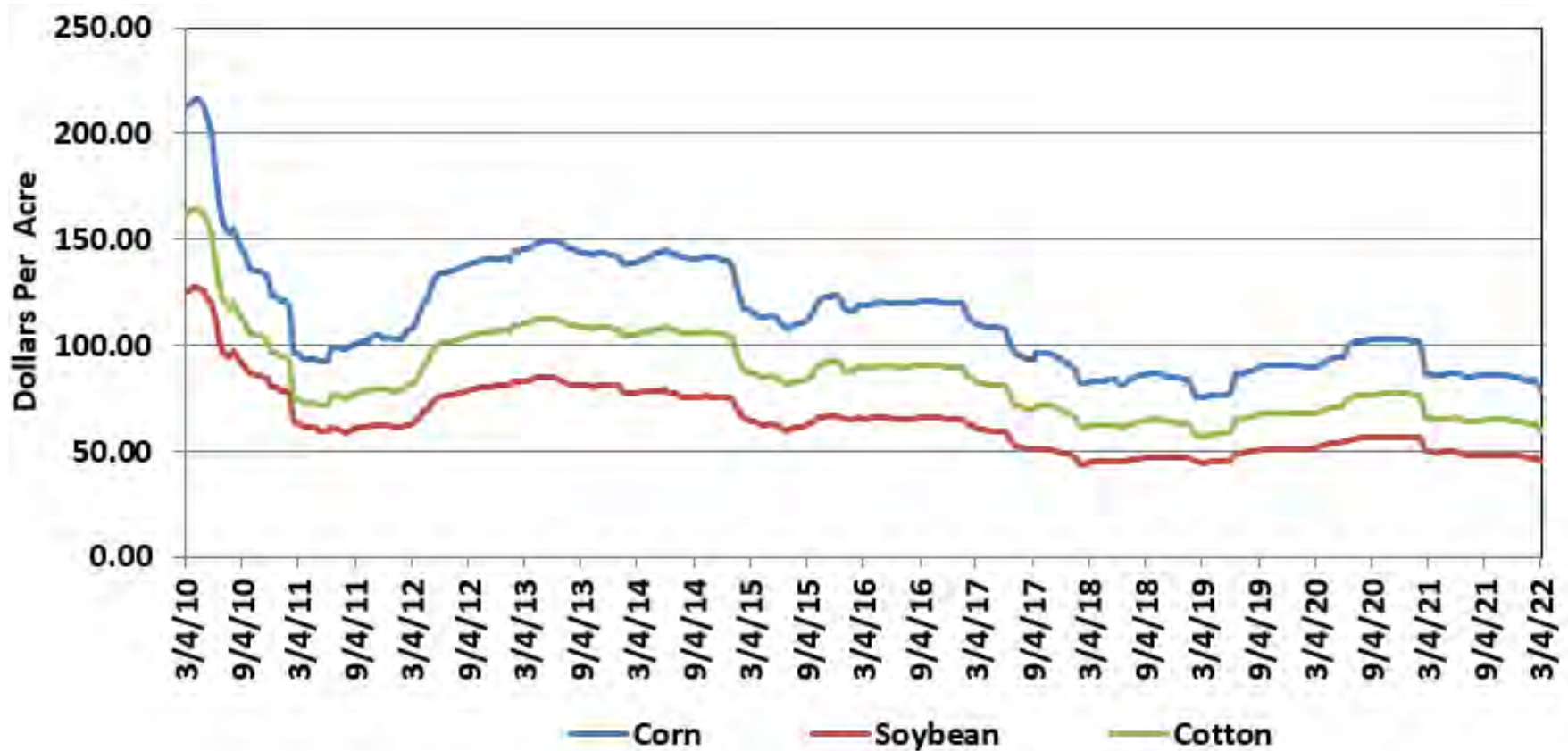
Division of Applied Social Sciences

College of Agriculture, Food and Natural Resources

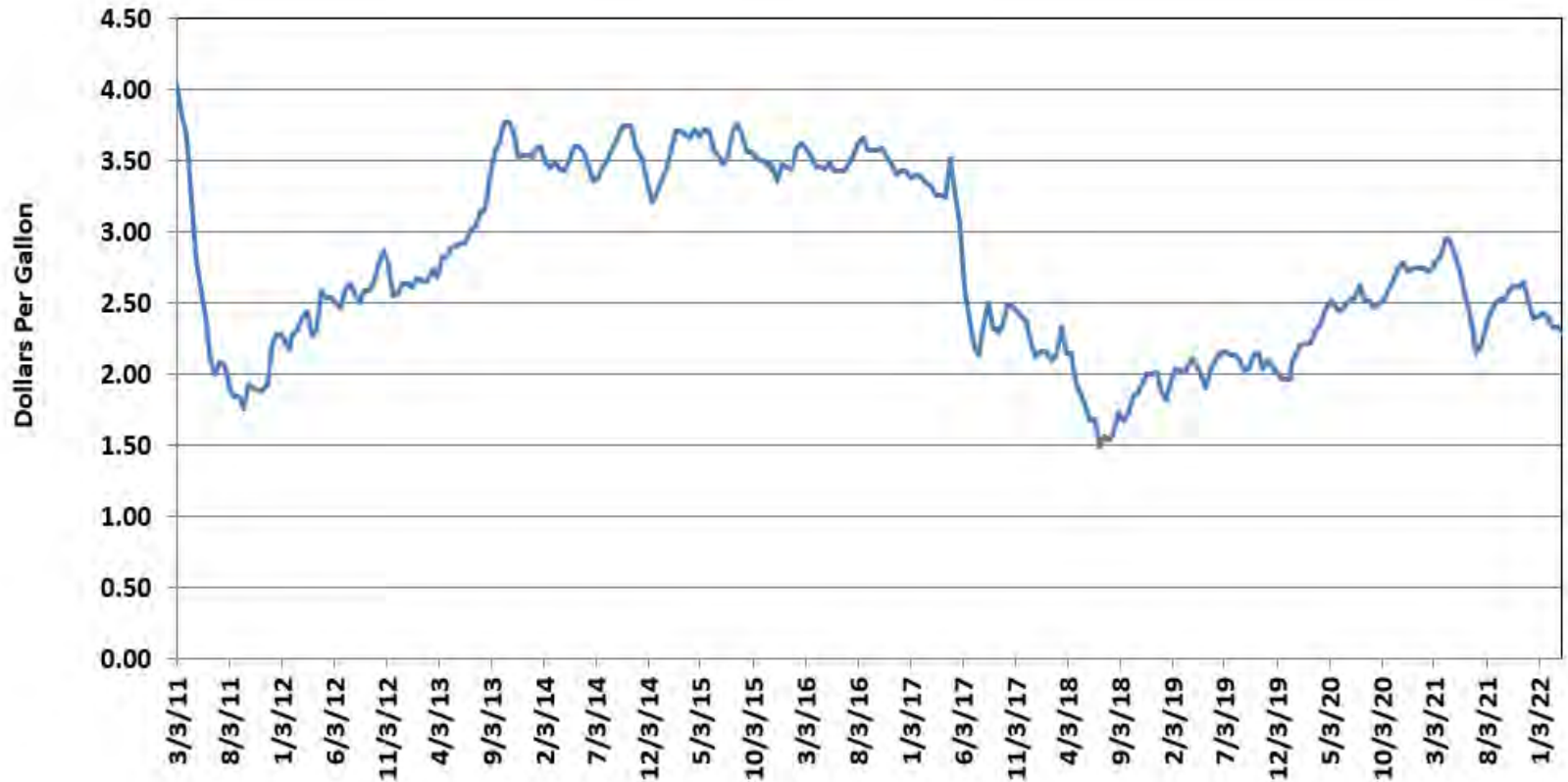
Fertilizer Prices



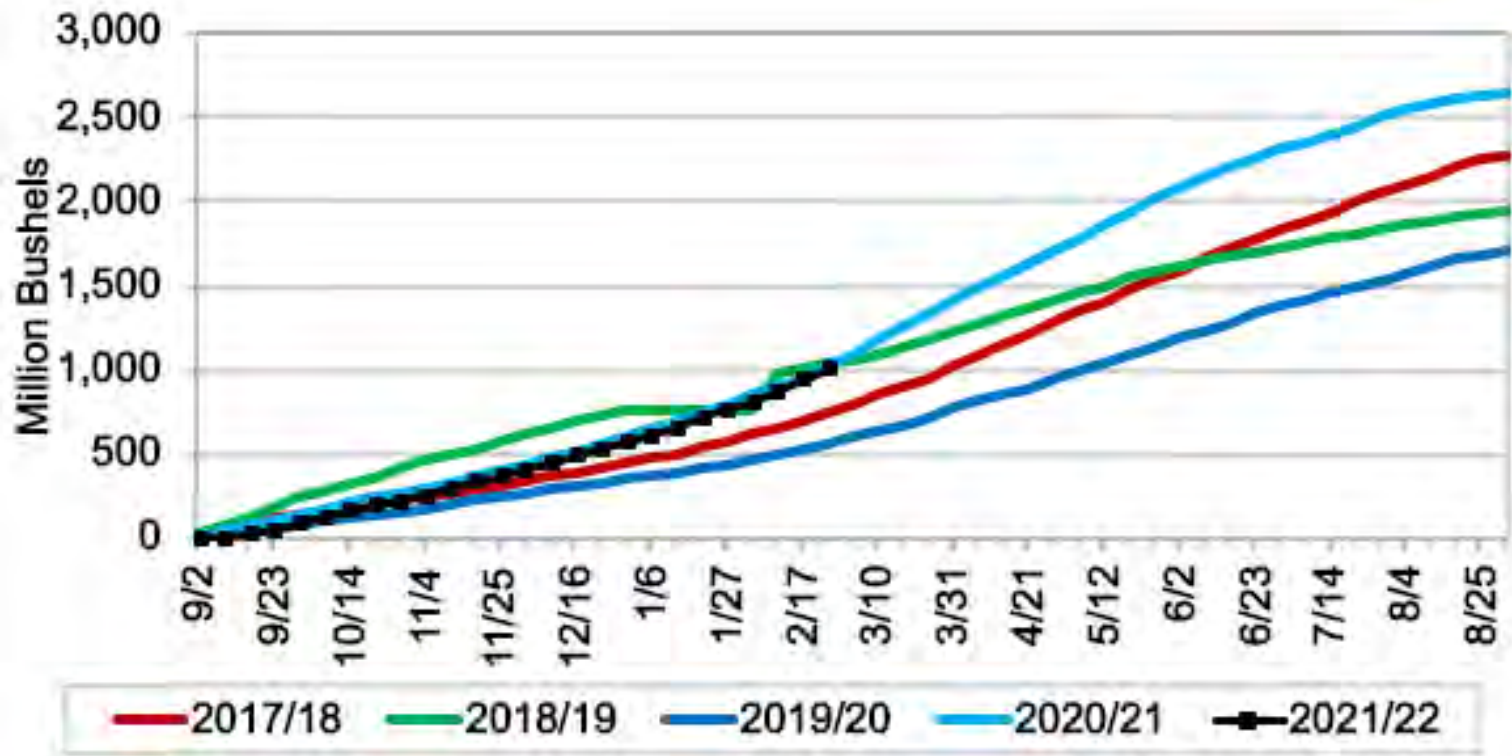
Fertilizer Prices Per Acre



Farm Diesel Price



Accumulated US Corn Exports to All Countries

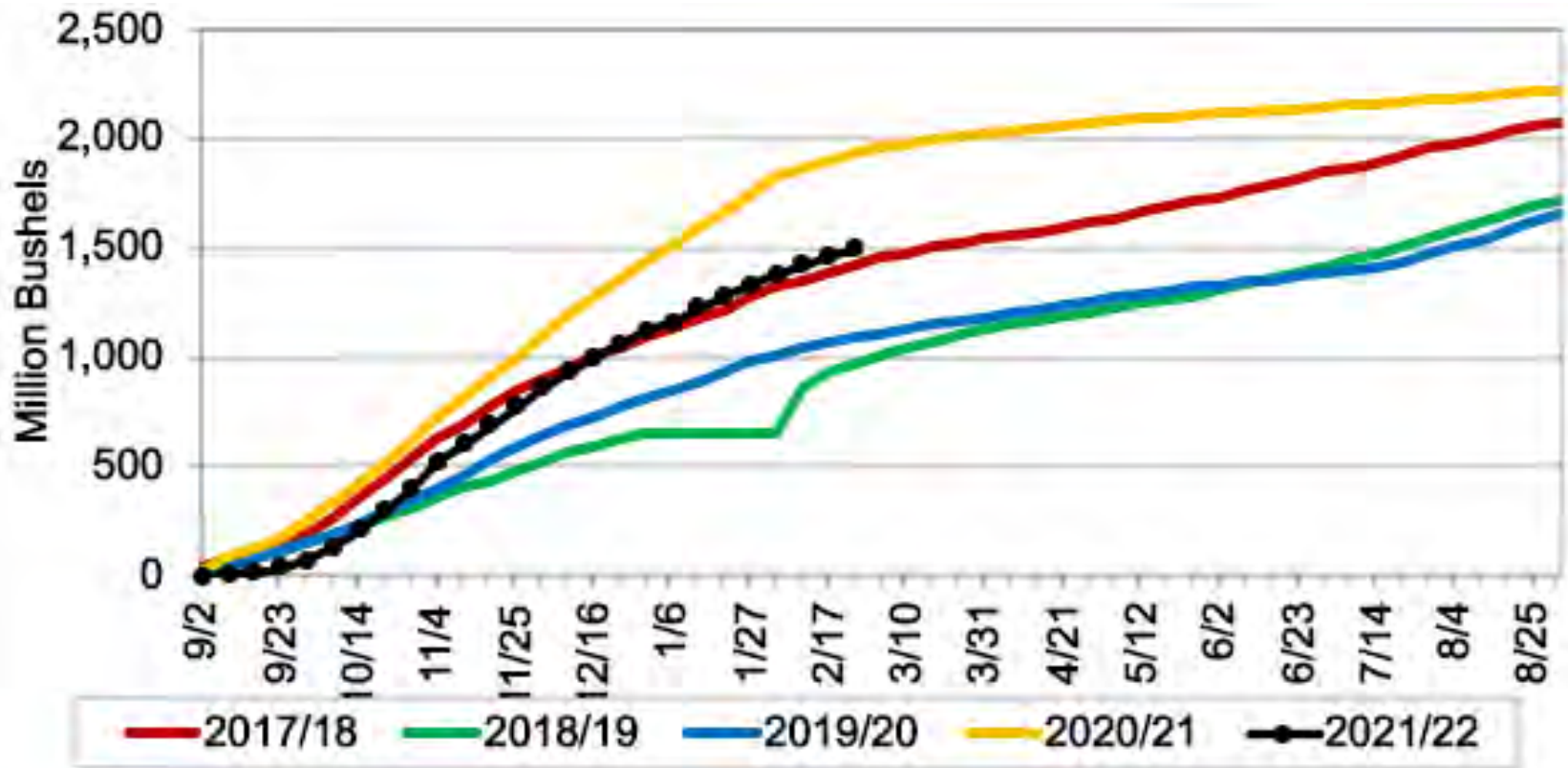


Corn Export Summary

- Net Sales for 2021 /2022 were at a marketing-year high, up noticeably from the previous week, and from the prior 4-week average at 84.4 MBU.
- Increases were largely credited to unknown destinations (31.5 MBU) and Japan (15.7 MBU).
- Net Sales for 2022/2023 totaled 901,527 BU, and were primarily for Mexico.
- Exports were at 69.4 MBU, up 14% from the previous week, and from the prior 4-week average.
- The destinations were primarily to China (21.9 MBU), Mexico (14.6 MBU), and Colombia (10.2 MBU)



Accumulated US Soybean Exports to All Countries

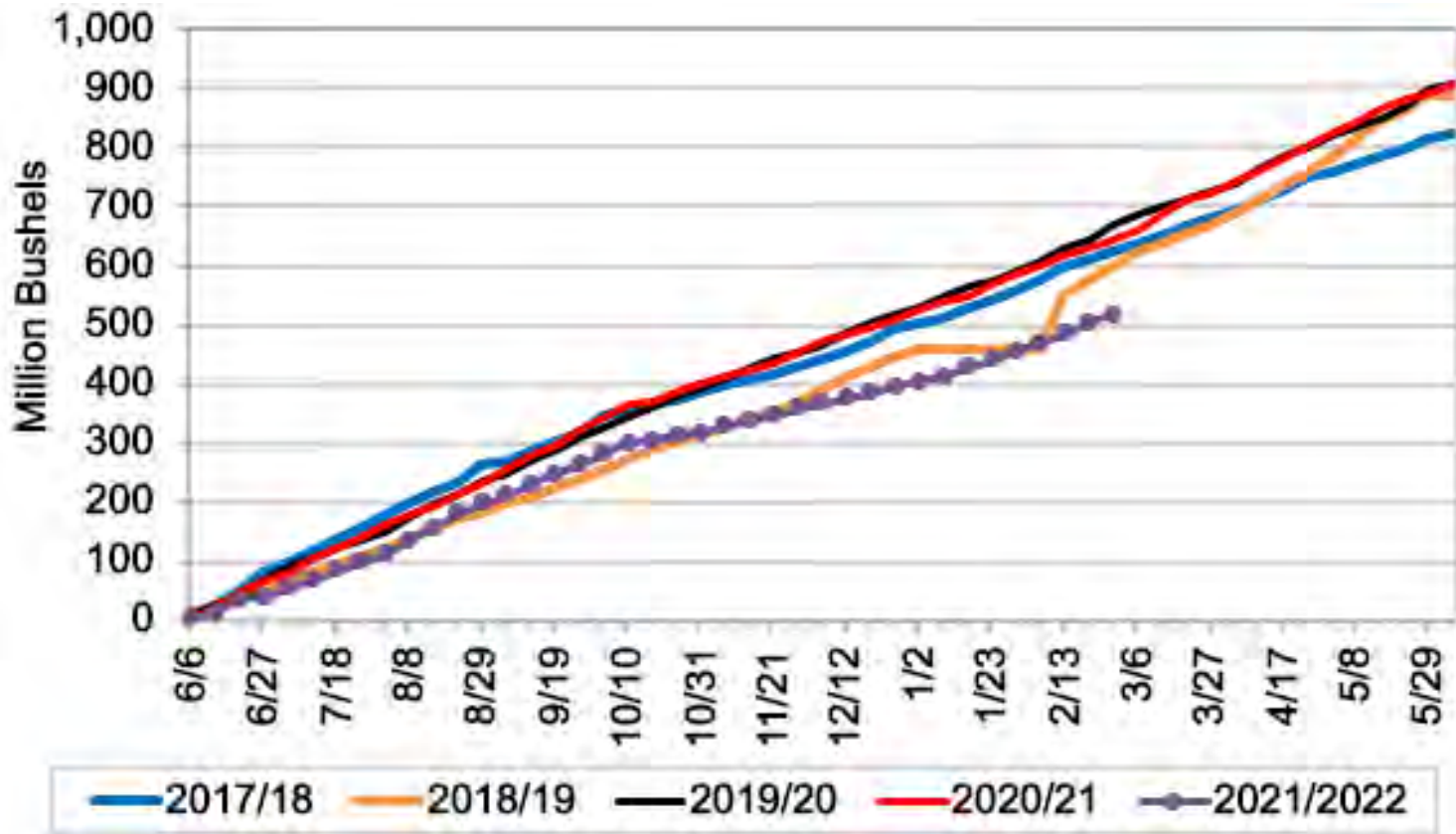


Soybean Export Summary

- Net Sales for 2021 /2022 totaled 80.99 MBU, up noticeably from the previous week, and 76% compared to the previous 4-week average.
- Increases are accredited to China (40.3 MBU), unknown destinations (12.3 MBU), and Egypt (6.6 MBU).
- Net Sales for 2022/2023 totaled 32.9 MBU and was reported for China (29.3 MBU) and unknown destinations (2.4 MBU).
- Exports were at 30.7 MBU, up 11% from the week prior, but down 26% from the previous 4-week average.
- The primary destinations were China (11.2 MBU), Egypt (6.4 MBU), and Mexico (2.8 MBU).
- For 2021 /2022, the current exports for own account outstanding balance is 110,220 BU, all Canada.



Accumulated US Wheat Exports to All Countries



Wheat Export Summary

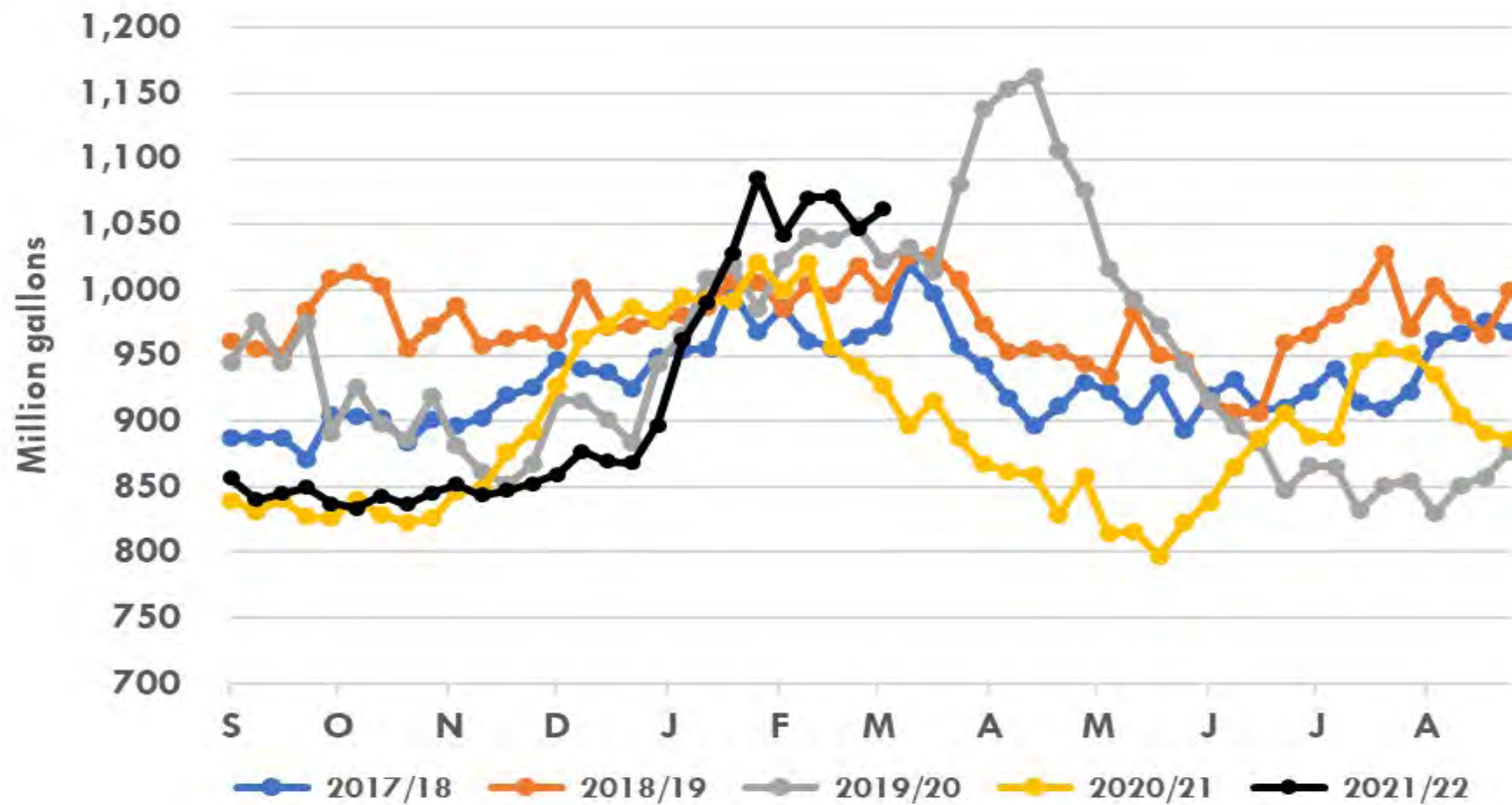
- Net Sales for 2021/2022 were at 11.3 MBU, up 2% from the prior week, and 21% from the previous 4-week average.
- Increases were primarily for the Philippines (4.9 MBU) and Mexico (4.1 MBU).
- Net Sales for 2022/2023 totaled to 2.3 MBU and was reported for the Philippines (1.8 MBU) and Mexico (477,620 BU).
- Exports were up 5% from the previous week, but down 10% from the prior 4-week average, totaling to 14.1 MBU.
- Destinations were primarily to Mexico (3.2 MBU), Japan (2.44 MBU), and the Philippines (2.39 MBU)



Weekly Ethanol Stocks



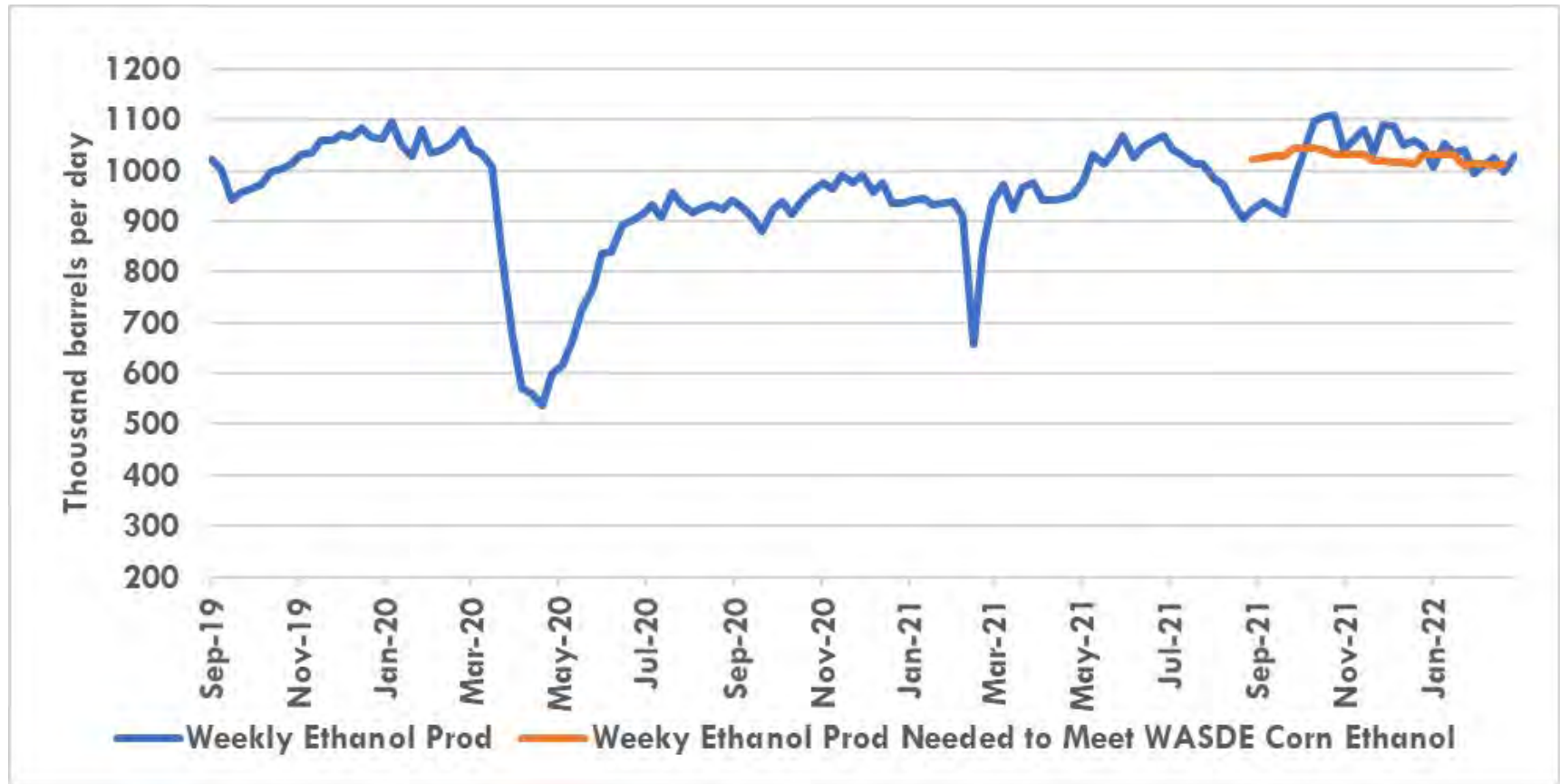
Weekly Ethanol Stocks



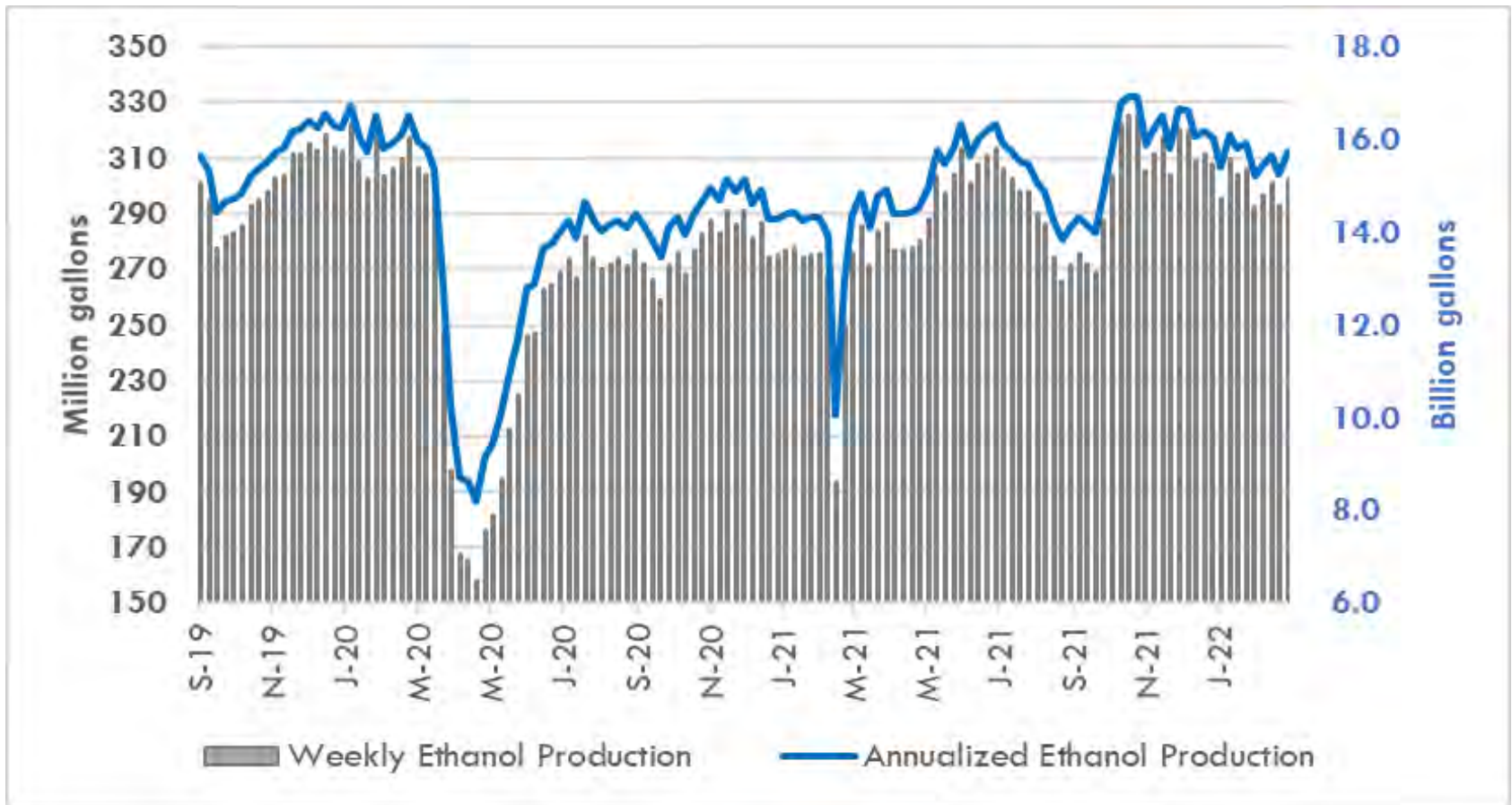
Source: EIA



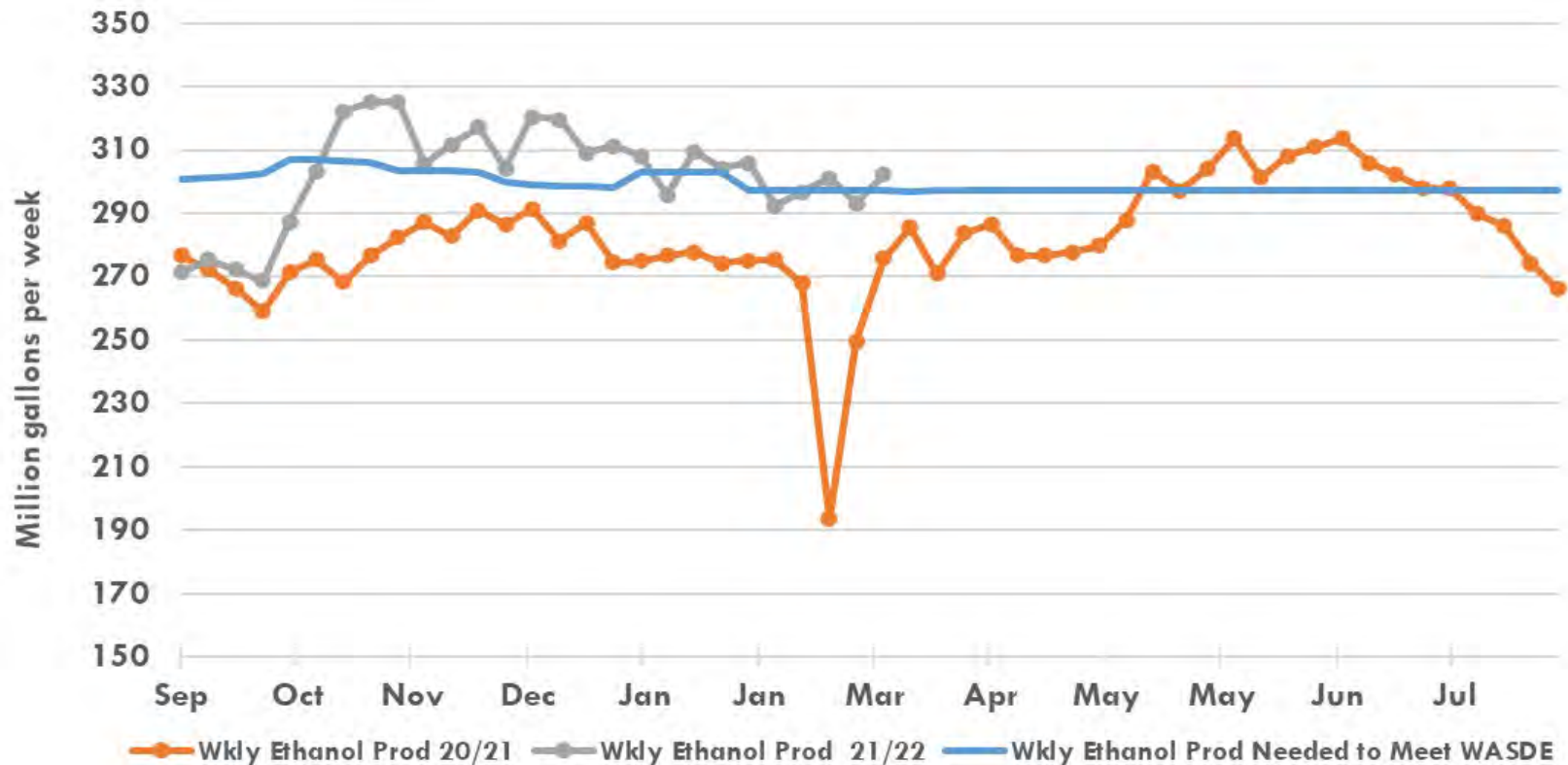
Weekly Ethanol Production



Weekly Ethanol Production



Weekly Ethanol Production



Source: EIA



THANKS!

Brought to you by:

The Food and Agricultural Policy Research Institute (FAPRI)

Division of Applied Social Sciences

College of Agriculture, Food and Natural Resources

WEBSITE:

www.fapri.missouri.edu