

WEEKLY OUTLOOK FOR MAR. 13TH – MAR. 19TH

Brought to you by:

the Student Laboratory

Nick Althoff, Hailey Schepers, Justin Eddy, Jacob Knaebel, and Gavin Frizzell

With Oversight by:

Marty Foreman and John Kruse

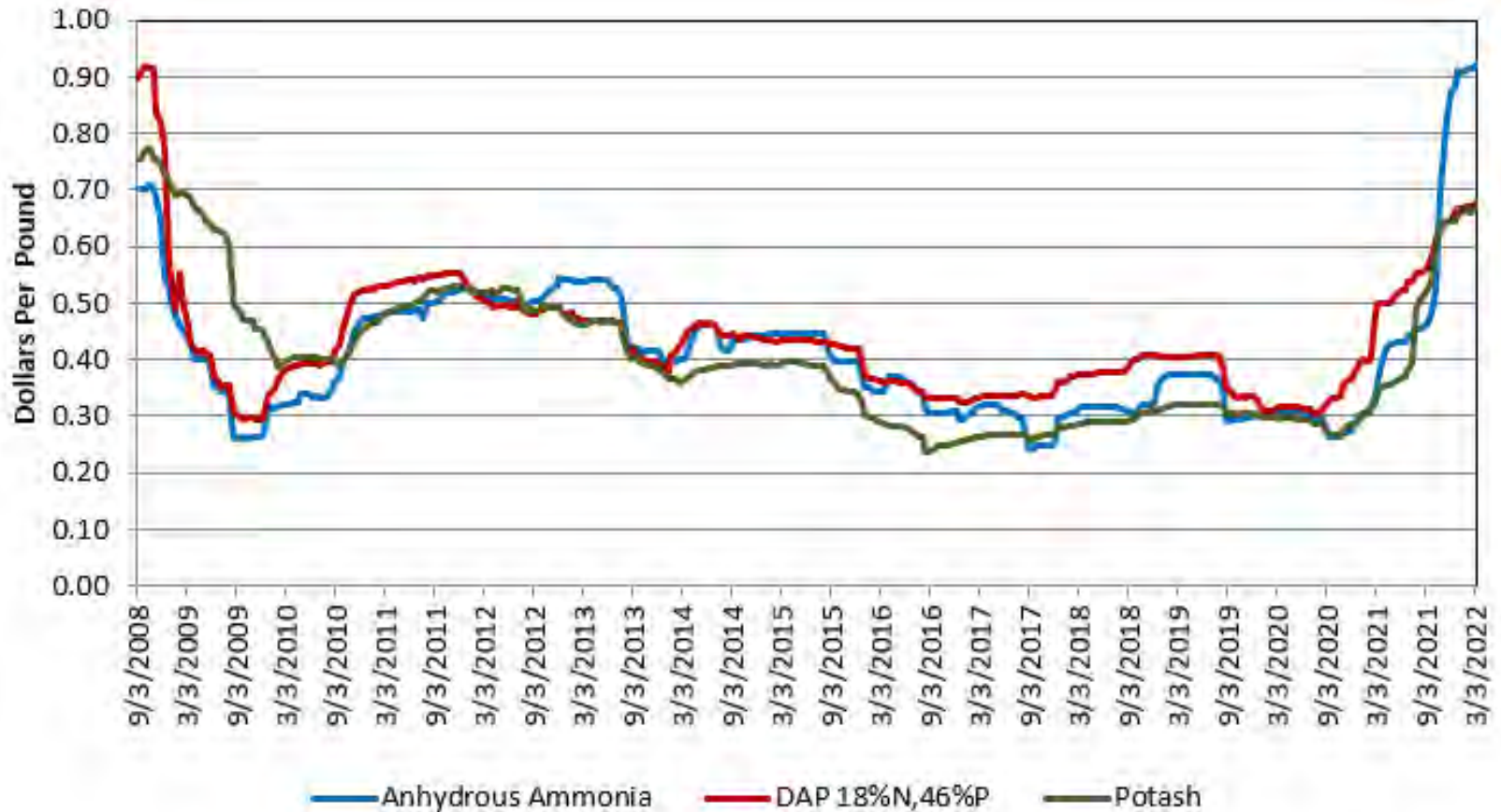
Funded by:

The Food and Agricultural Policy Research Institute (FAPRI)

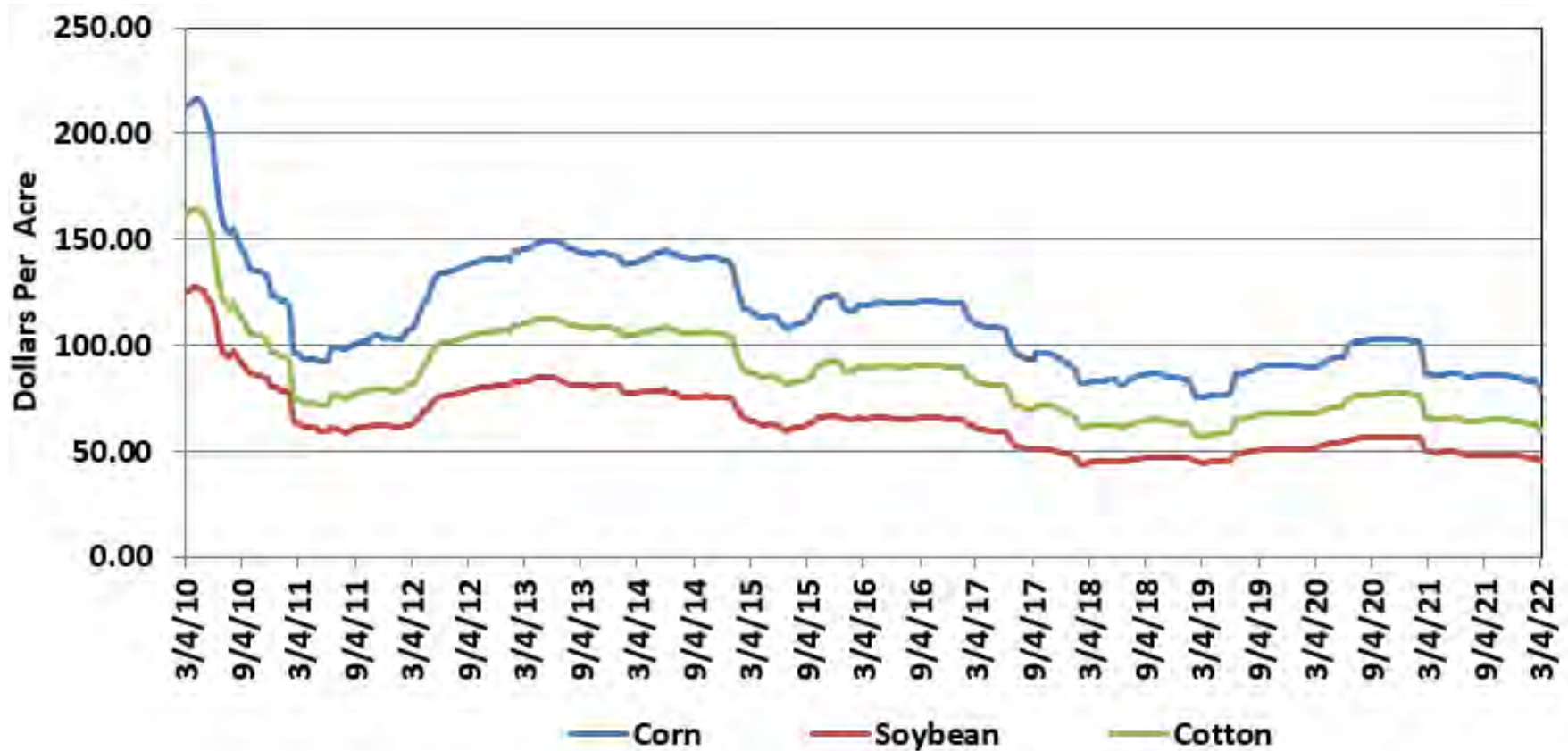
Division of Applied Social Sciences

College of Agriculture, Food and Natural Resources

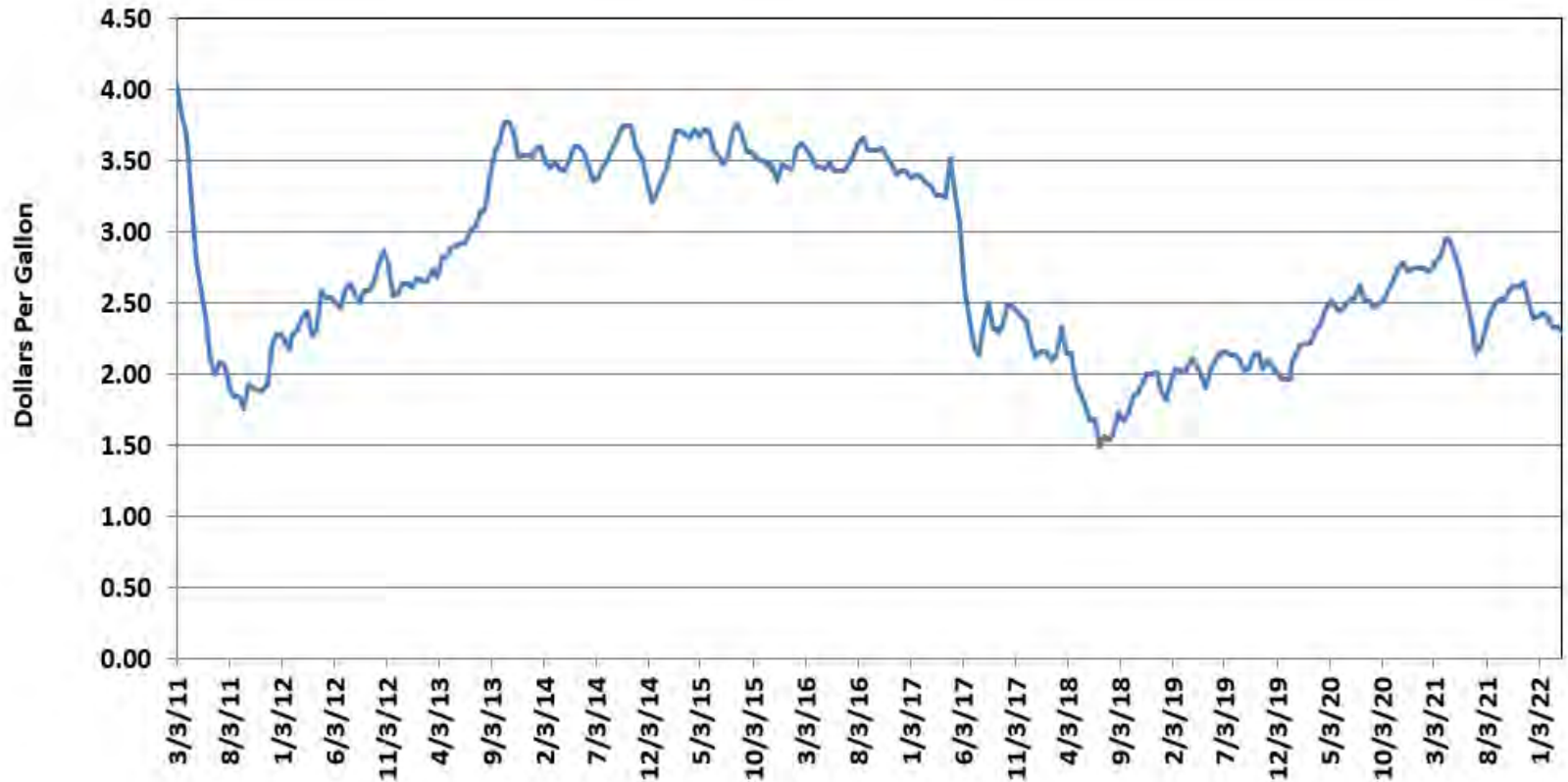
Fertilizer Prices



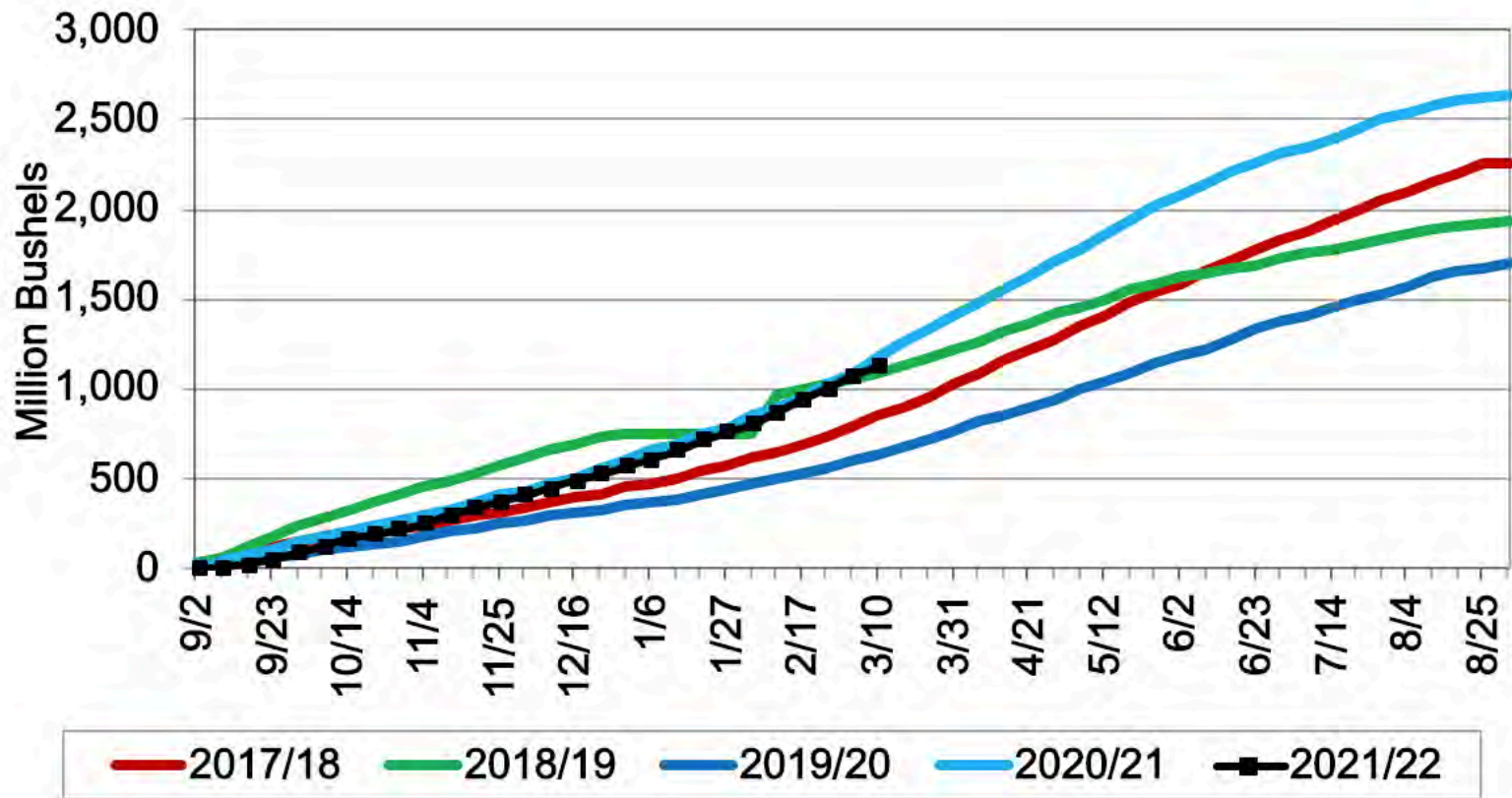
Fertilizer Prices Per Acre



Farm Diesel Price



Accumulated US Corn Exports to All Countries

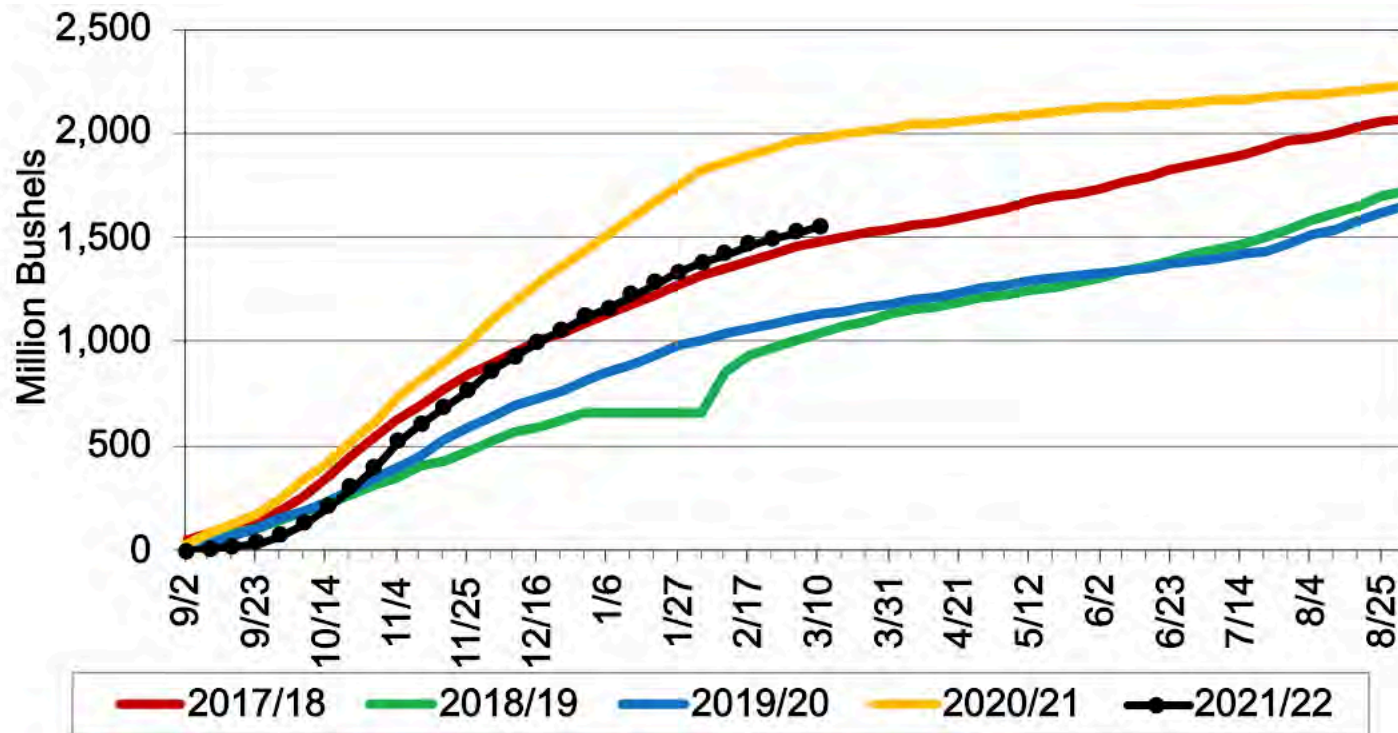


Corn Export Summary

- Net Sales for 2021/2022 were at a marketing-year high, down 14% from the previous week, but up 64% from the prior 4-week average at 72.3 MBU.
- Increases were largely credited to Japan (21.2 MBU) and unknown destinations (11.9 MBU).
- Net Sales for 2022/2023 totaled 8.03 MBU, and were primarily for China.
- Exports were at 50.1 MBU, down 28% from the previous week, and 25% from the prior 4-week average.
- The destinations were primarily to China (13.2 MBU), Mexico (11 MBU), and Colombia (6.9 MBU).



Accumulated US Soybean Exports to All Countries

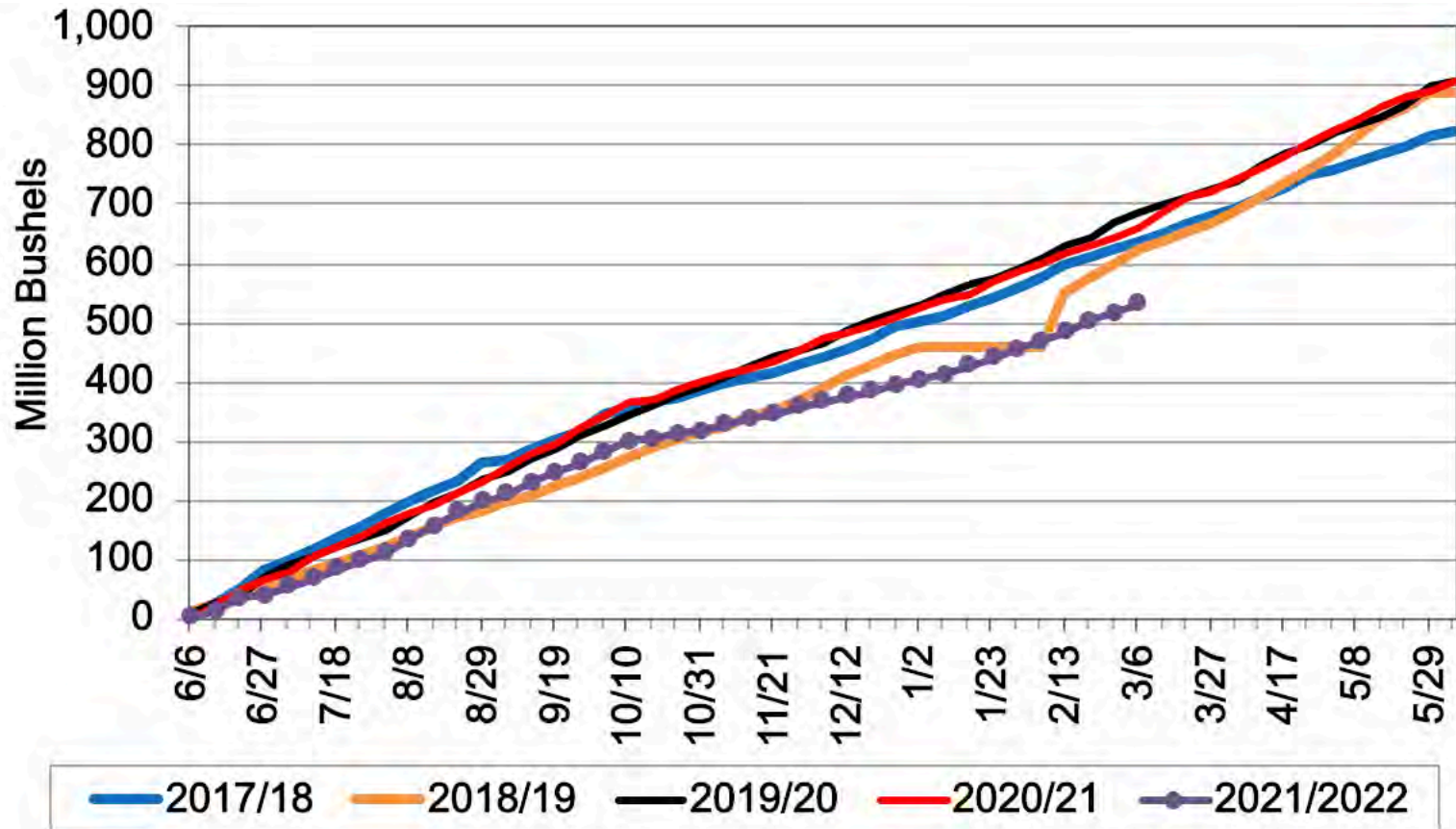


Soybean Export Summary

- Net Sales for 2021 /2022 totaled 46.04 MBU, down 43% from the previous week, and 11% compared to the previous 4-week average.
- Increases are accredited to China (14.5 MBU), unknown destinations (9.8 MBU), and Egypt (8.9 MBU).
- Net Sales for 2022/2023 totaled 17.5 MBU and was reported for China (14.9 MBU) and unknown destinations (2.6 MBU).
- Exports were at 26.2 MBU, down 14% from the week prior, and 29% from the previous 4-week average.
- The primary destinations were China (13.6 MBU), Mexico (4.4 MBU), and Indonesia (3.2 MBU).
- For 2021 /2022, the current exports for own account outstanding balance is 110,220 BU, all Canada.



Accumulated US Wheat Exports to All Countries



Wheat Export Summary

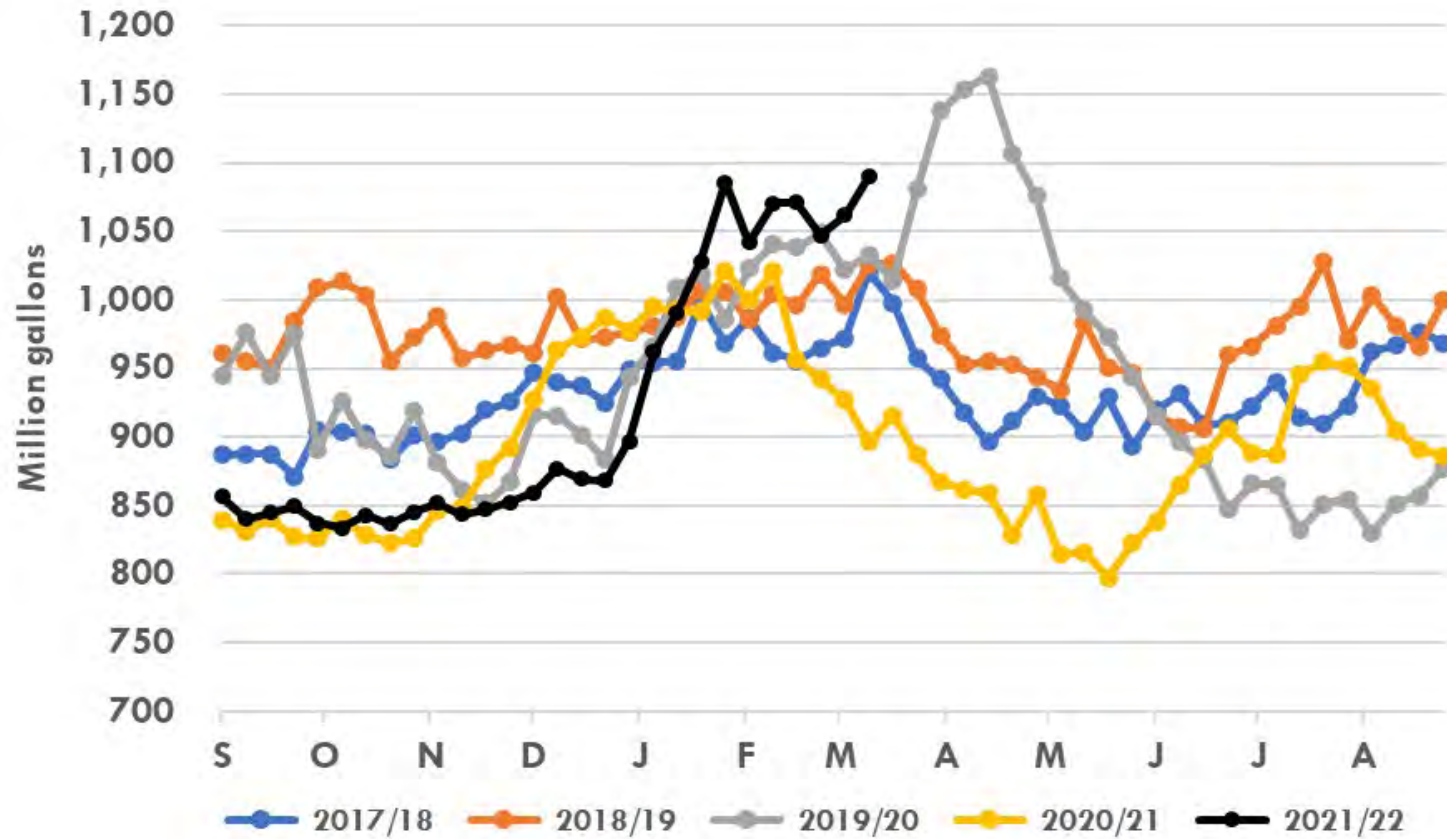
- Net Sales for 2021 /2022 were at 5.4 MBU, down 53% from the prior week, and from the previous 4-week average.
- Increases were primarily for Colombia (1.7 MBU) and Mexico (1.6 MBU).
- Net Sales for 2022/2023 totaled to 11.96 MBU and was reported for the Philippines (9.5 MBU) and Guatemala (1.7 MBU).
- Exports were down 35% from the previous week, and 42% from the prior 4-week average, totaling to 9.2 MBU.
- Destinations were primarily to Mexico (2.97 MBU), the Philippines (1.3 MBU), and Chile (1.1 MBU).



Weekly Ethanol Stocks



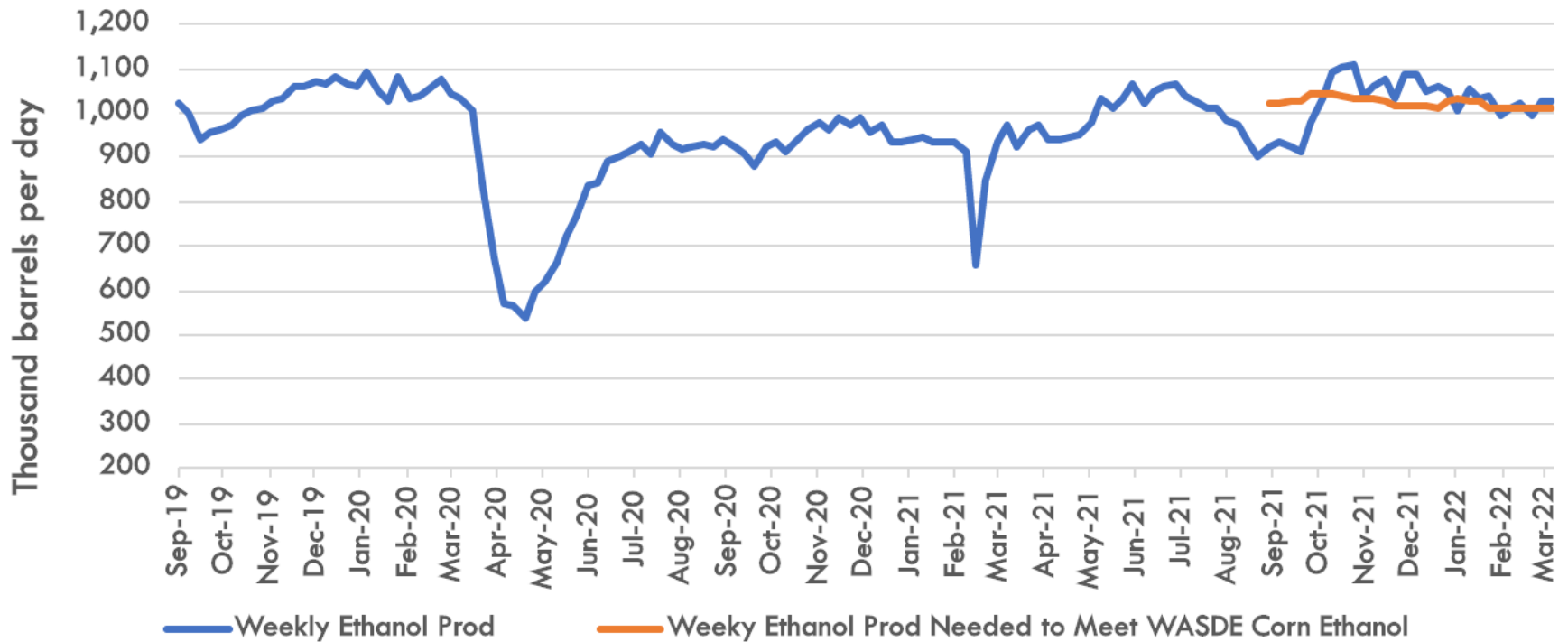
Weekly Ethanol Stocks



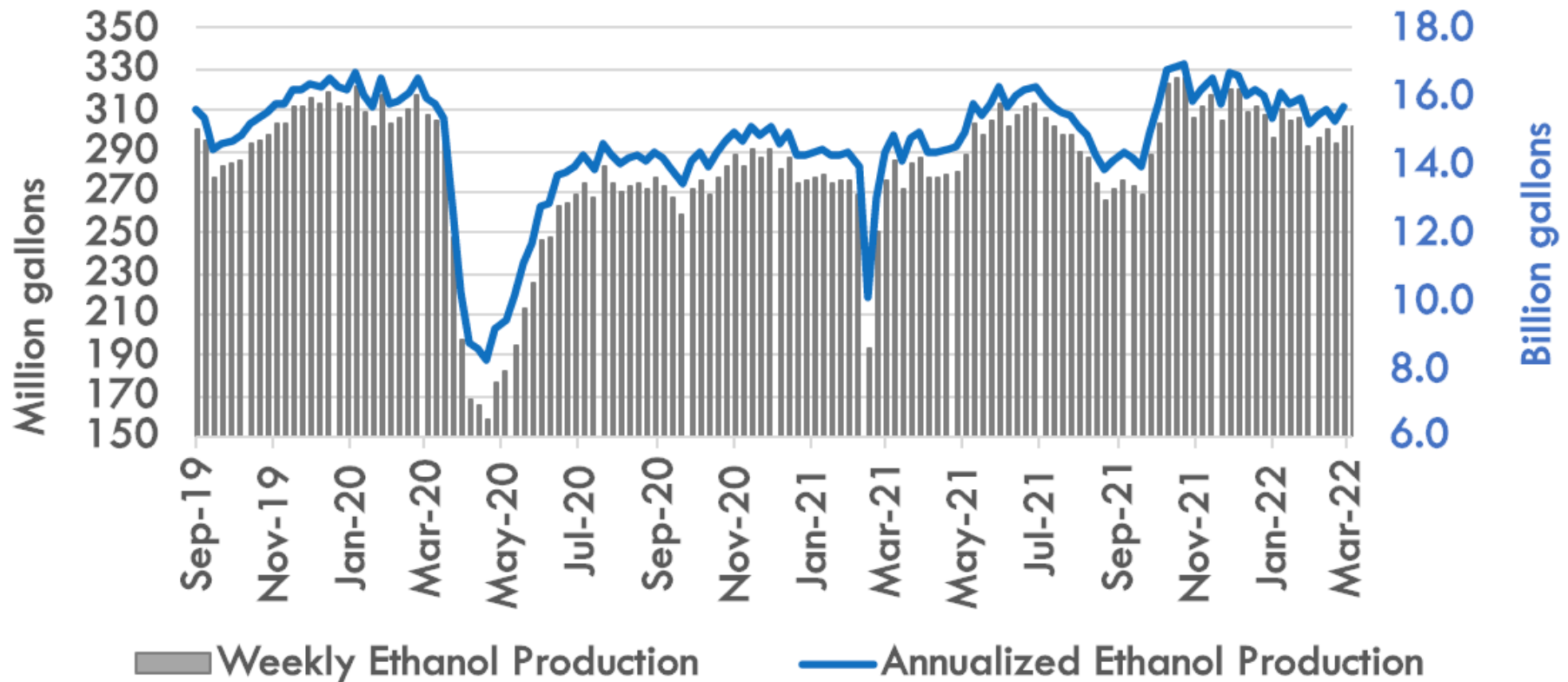
Source: EIA



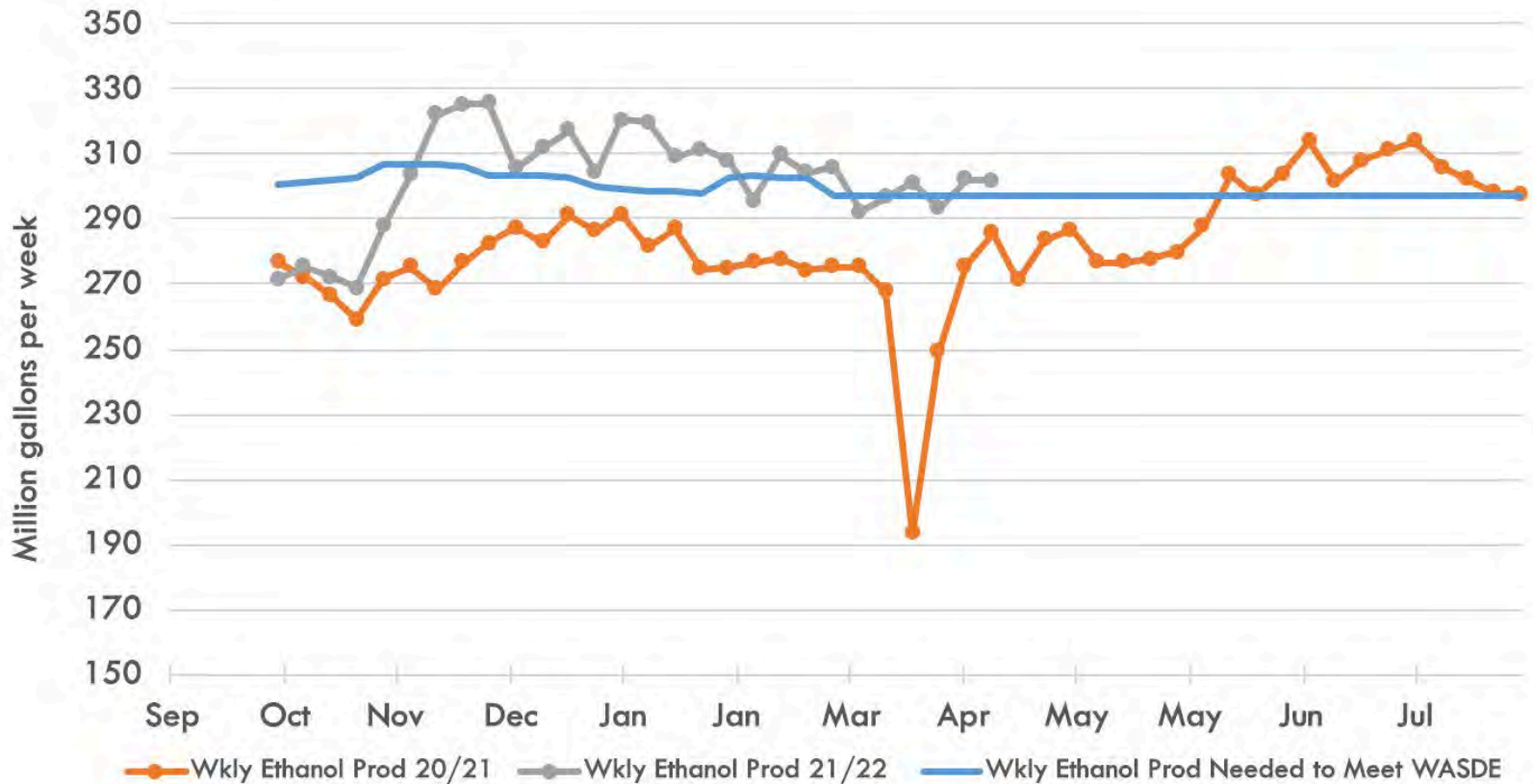
Weekly Ethanol Production



Weekly Ethanol Production



Weekly Ethanol Production



THANKS!

Brought to you by:

The Food and Agricultural Policy Research Institute (FAPRI)

Division of Applied Social Sciences

College of Agriculture, Food and Natural Resources

WEBSITE:

www.fapri.missouri.edu