

SEPTEMBER 2021 CROP OUTLOOK

Brought to you by:

the Student Laboratory

Nick Althoff, Hailey Schepers, and Justin Eddy

With Oversight by:

Marty Foreman, James Kaufman, and John Kruse

Funded by:

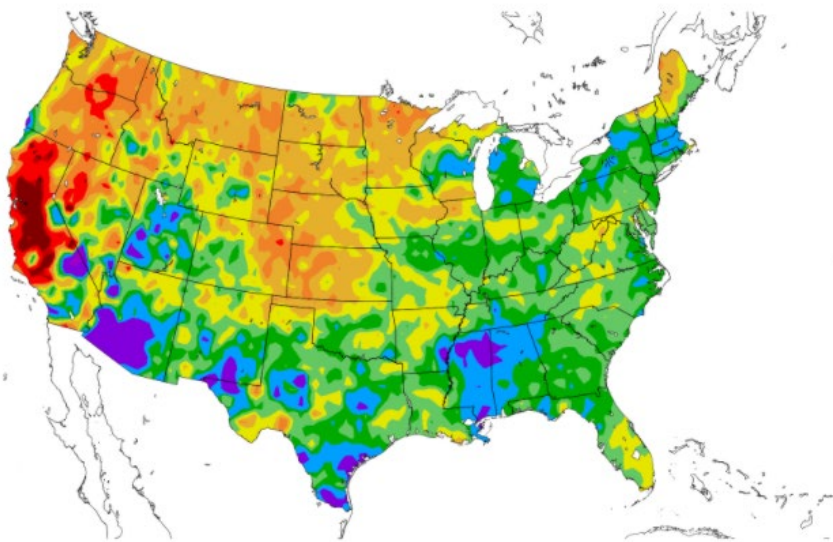
The Food and Agricultural Policy Research Institute (FAPRI)

Division of Applied Social Sciences

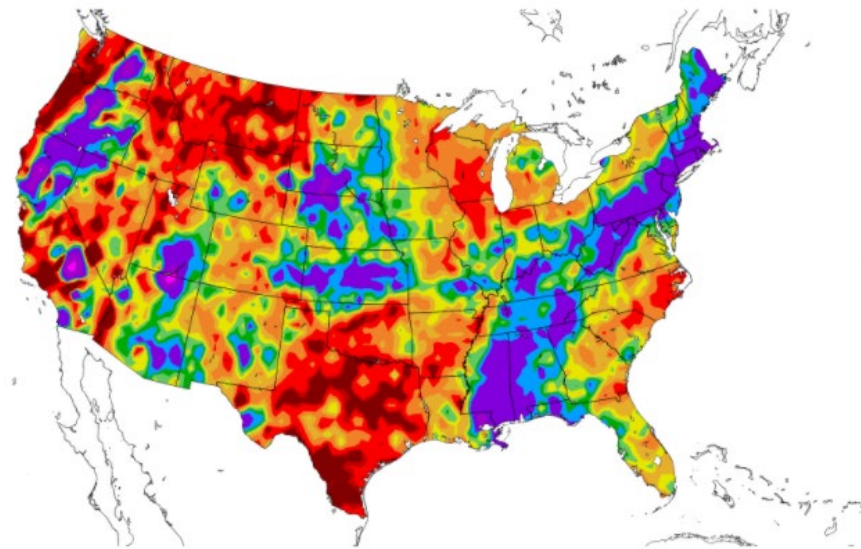
College of Agriculture, Food and Natural Resources

Precipitation

Percent of Normal Precipitation (%)
6/1/2021 – 8/31/2021



Percent of Normal Precipitation (%)
8/30/2021 – 9/12/2021



2 5 25 50 75 100 125 150 200 400 800

2 5 25 50 75 100 125 150 200 400 800

9/13/2021 at HPRCC using provisional data.

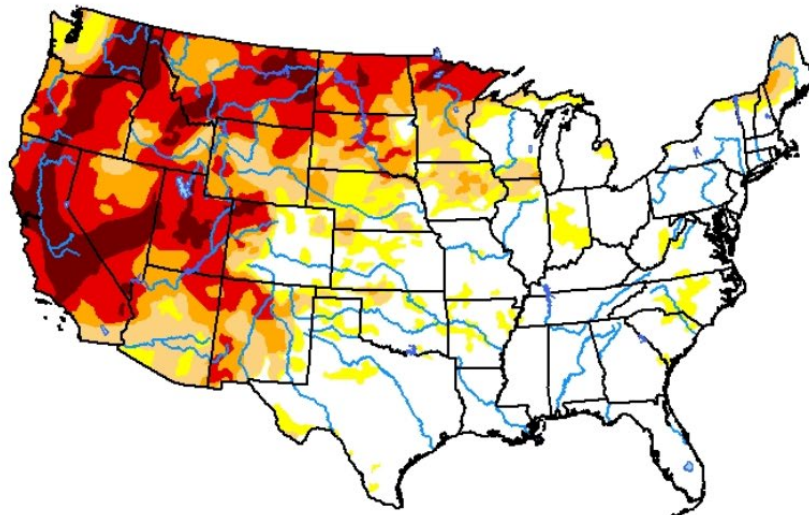
NOAA Regional Climate Center








US Drought Monitor

U.S. Drought Monitor Contiguous U.S. (CONUS)

September 7, 2021
(Released Thursday, Sep. 9, 2021)
Valid 8 a.m. EDT



Intensity:

-  None
-  D0 Abnormally Dry
-  D1 Moderate Drought
-  D2 Severe Drought
-  D3 Extreme Drought
-  D4 Exceptional Drought

The Drought Monitor focuses on broad-scale conditions. Local conditions may vary. For more information on the Drought Monitor, go to <https://droughtmonitor.unl.edu/About.aspx>

Author:

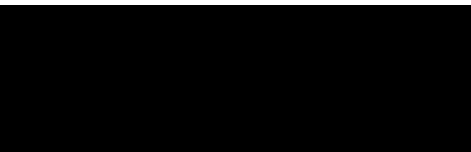
David Simeral
Western Regional Climate Center



droughtmonitor.unl.edu

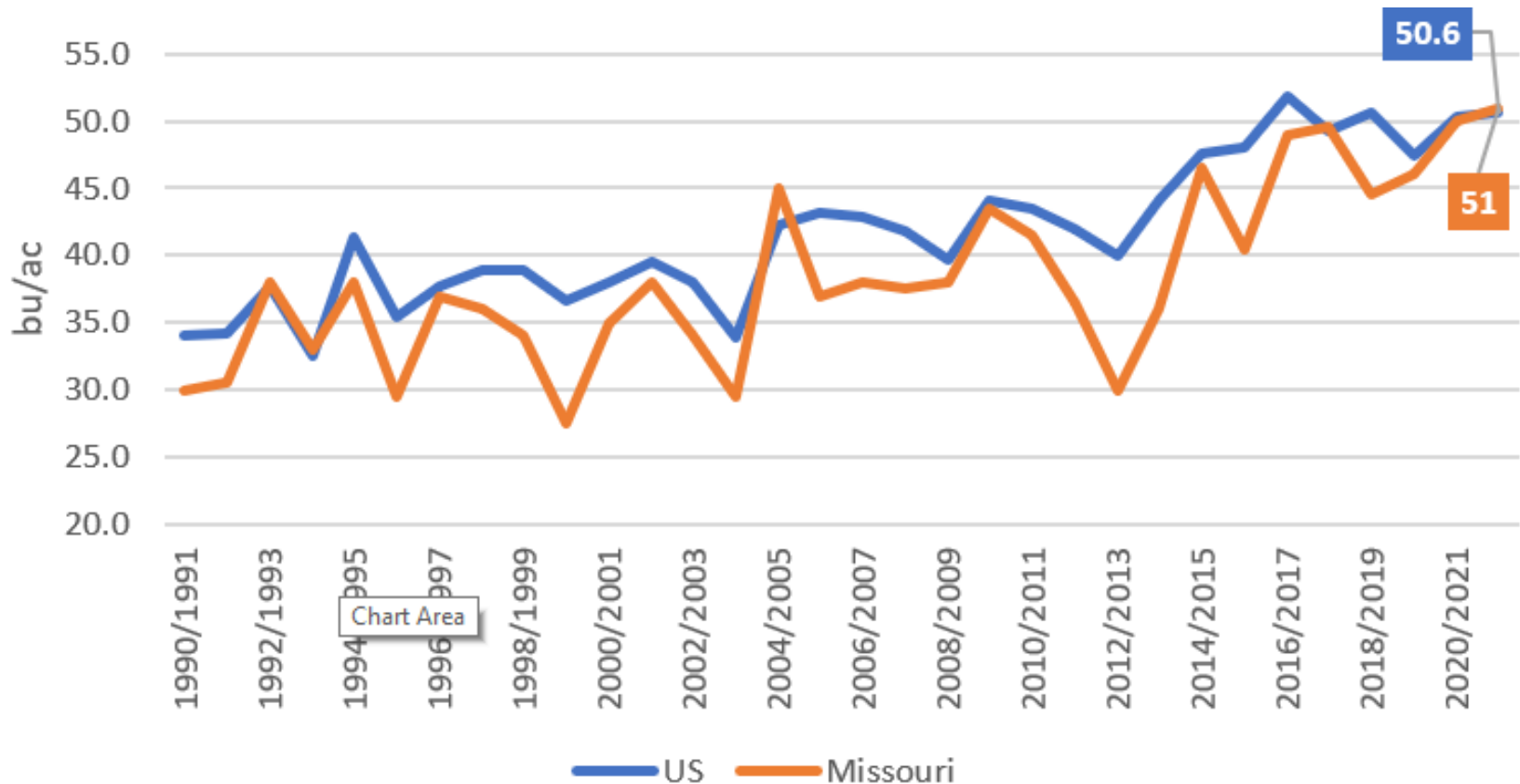


SOYBEAN OUTLOOK



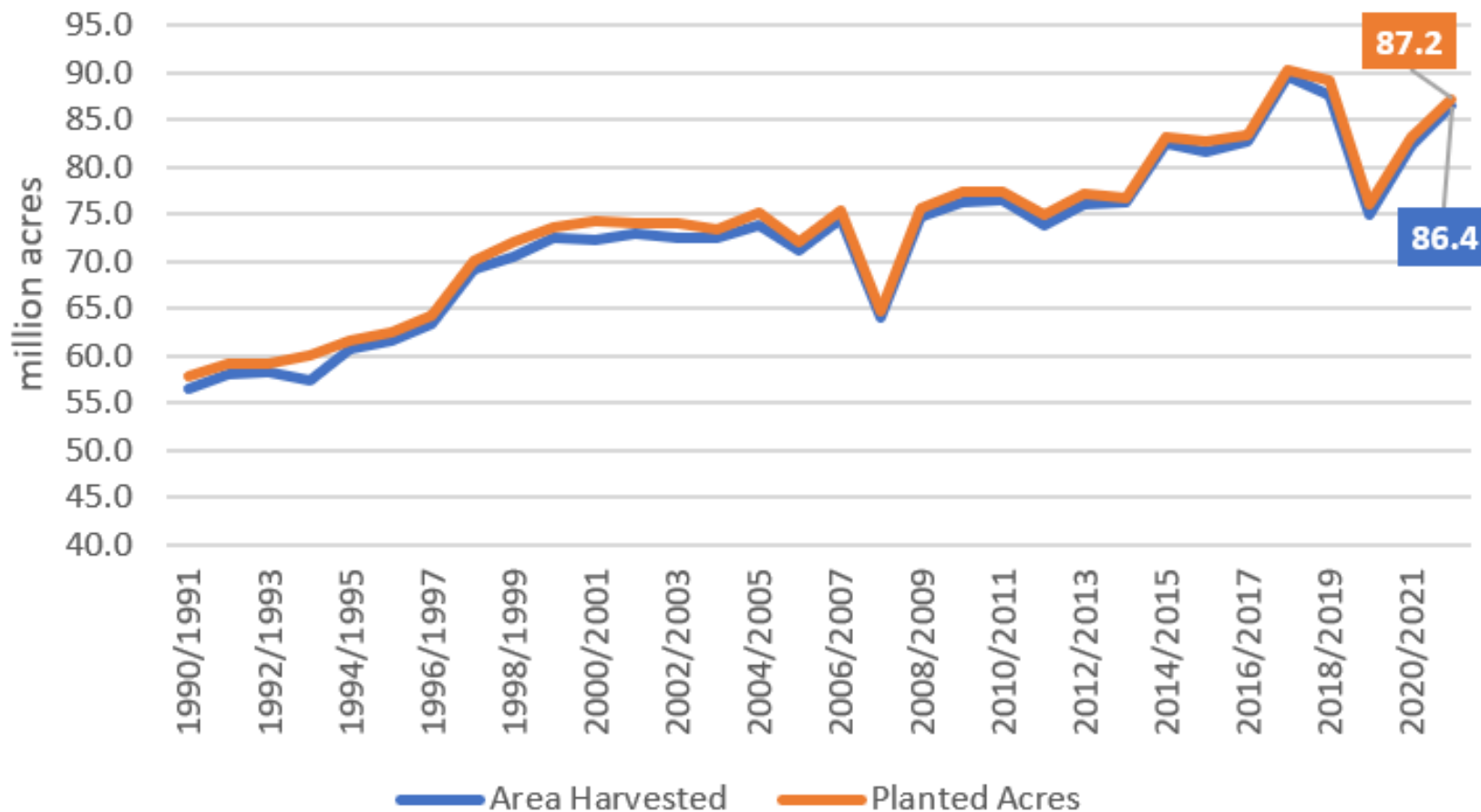
US and Missouri Soybean Yield

USDA-NASS Estimates



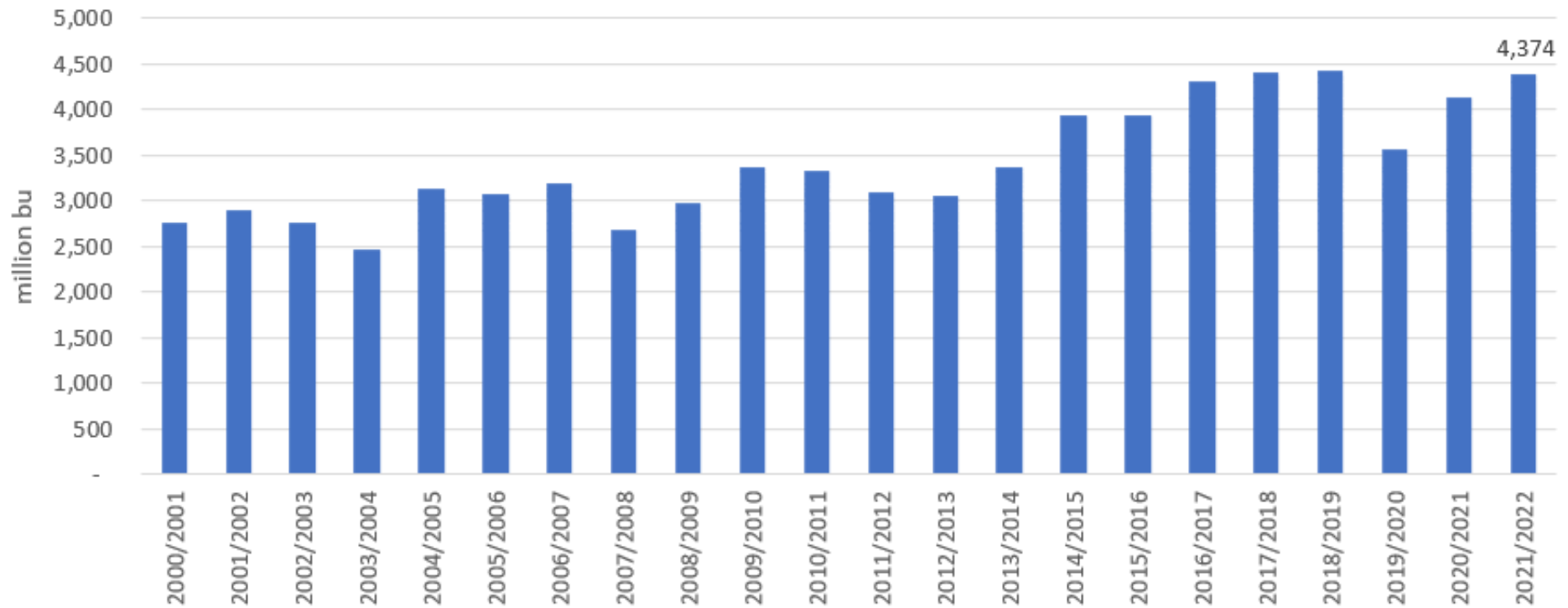
US Soybean Planted and Harvested Acres

USDA-NASS Estimates

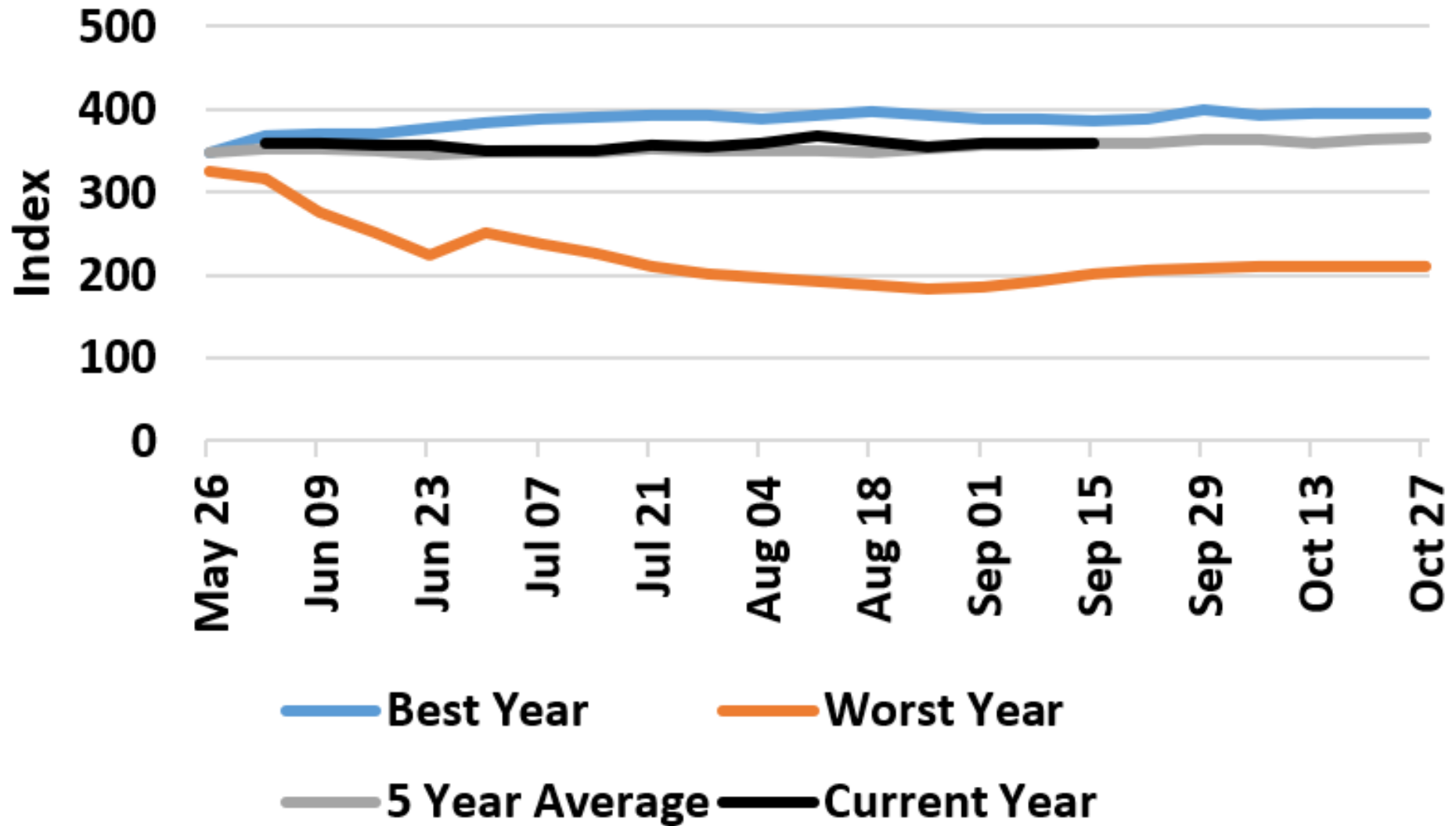


US Soybean Production

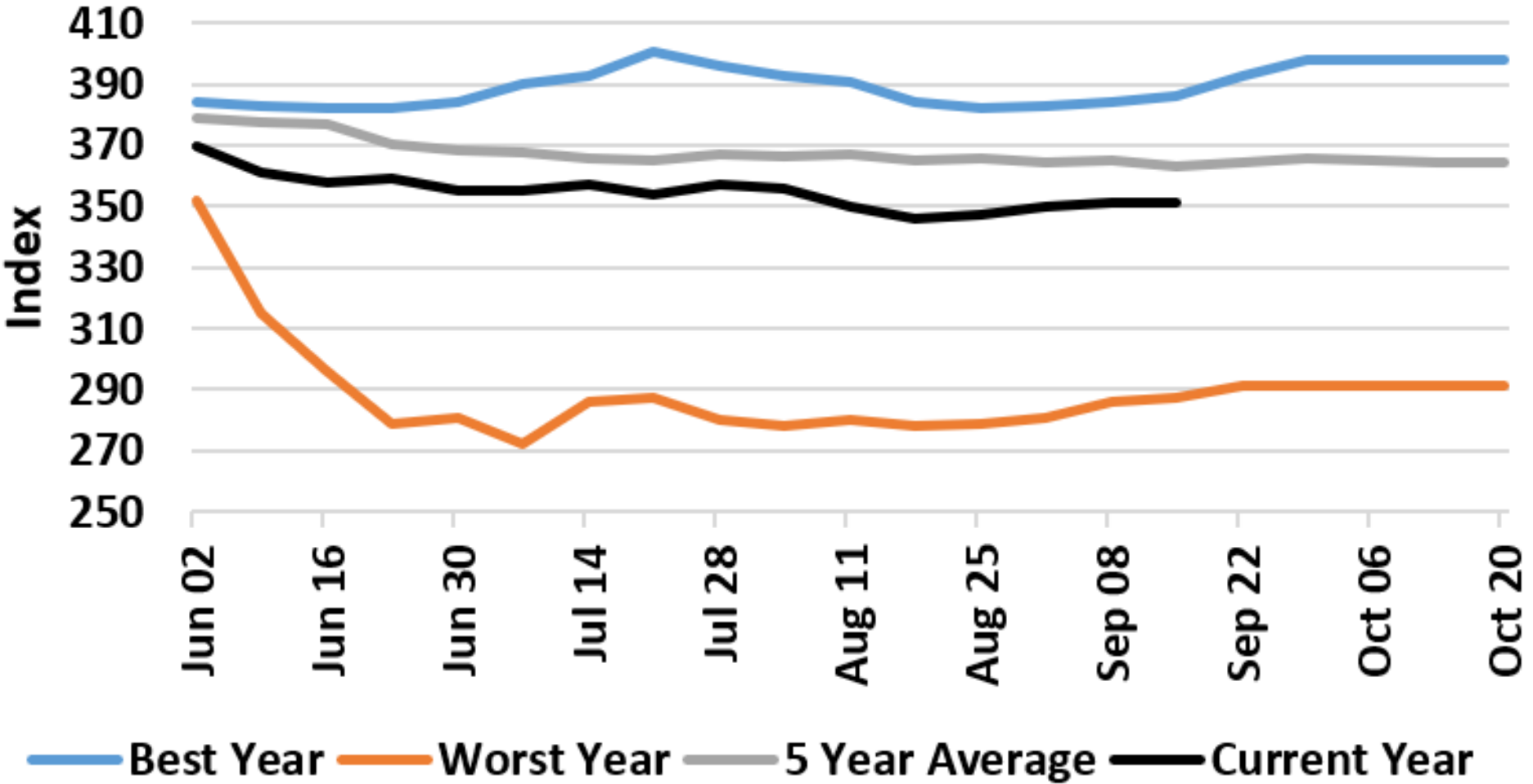
USDA-NASS Estimates



Missouri Soybean Condition Index



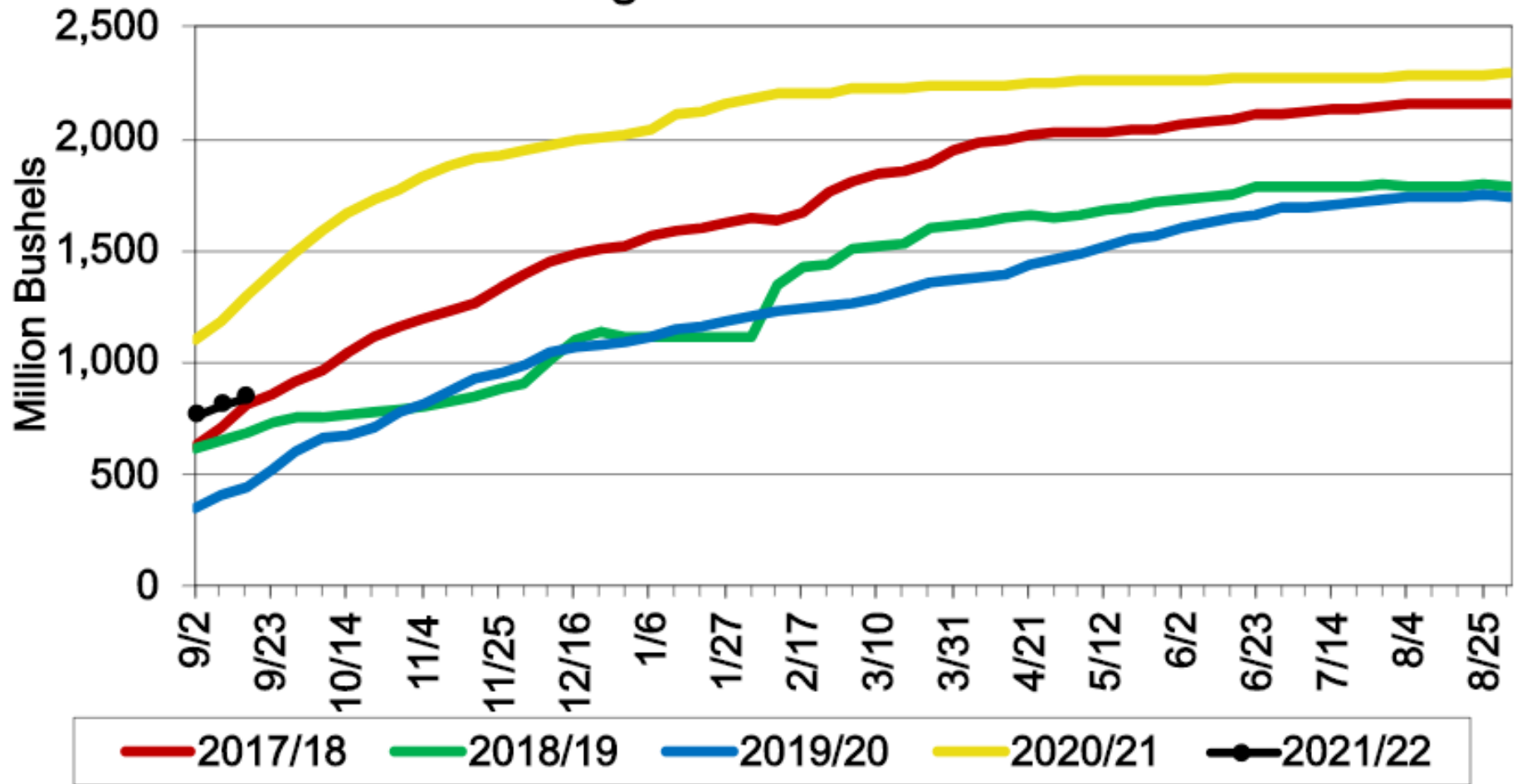
United States Soybean Condition Index



September 2021 US Soybean Supply and Use Update

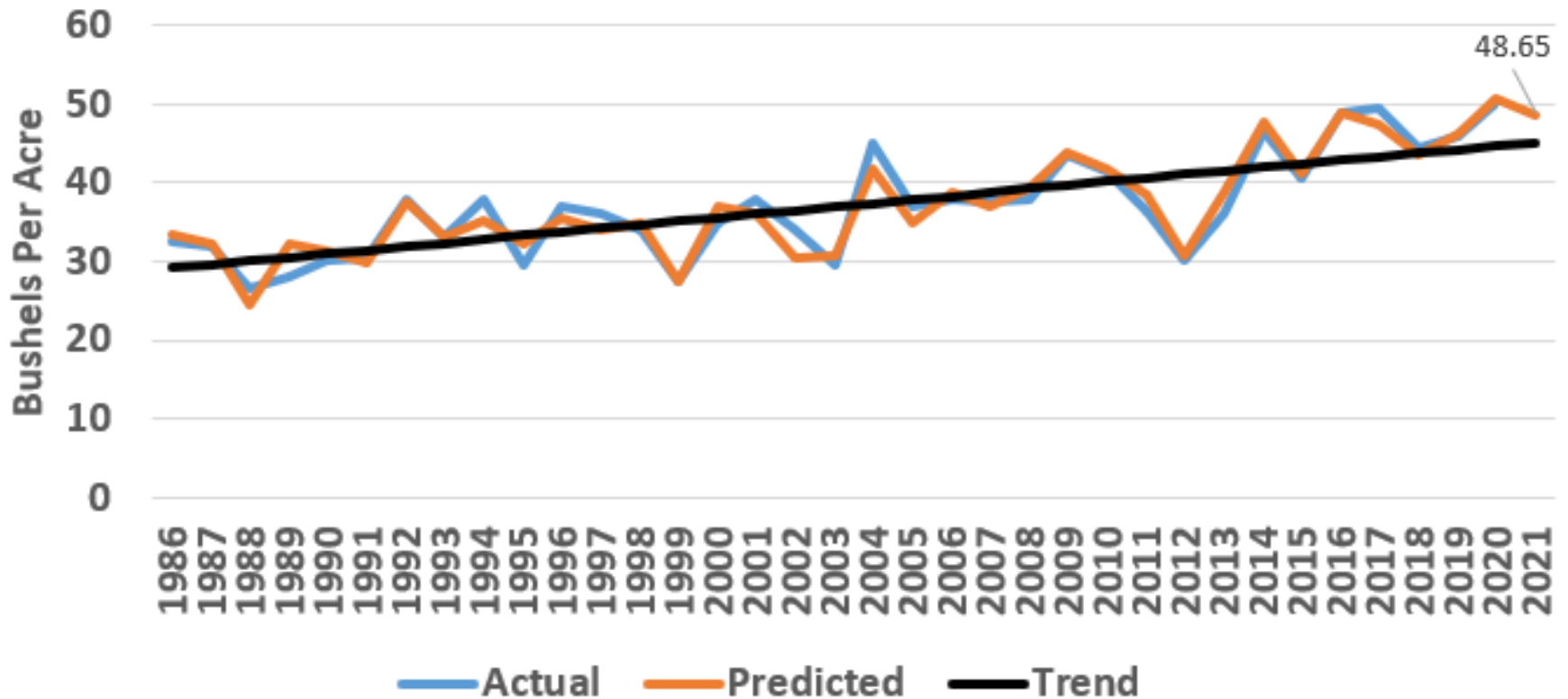
| | Units | 2019/20 | 2020/21 | | 2021/22 | | |
|-----------------------------|--------|---------|--------------------|------------------------|--------------------|------------------------|-----------------------|
| | | WASDE | September WASDE | % Δ from last month | September WASDE | % Δ from last month | % Δ from last year |
| Area Planted | mil ac | 76.1 | 83.1 | 0.0% | 87.2 | -0.5% | 4.9% |
| Area Harvested | mil ac | 74.9 | 82.3 | 0.0% | 86.4 | -0.3% | 5.0% |
| Yield | bu/ac | 47.4 | 50.2 | 0.0% | 50.6 | 1.2% | 0.8% |
| Beginning Stocks | mil bu | 909 | 525 | 0.0% | 175 | 9.4% | -66.7% |
| Production | mil bu | 3,552 | 4,135 | 0.0% | 4,374 | 0.8% | 5.8% |
| Imports | mil bu | 15 | 20 | 0.0% | 25 | -28.6% | 25.0% |
| Total Supply | mil bu | 4,476 | 4,680 | 0.0% | 4,574 | 0.9% | -2.3% |
| Crush | mil bu | 2,165 | 2,140 | -0.7% | 2,180 | -1.1% | 1.9% |
| Seed & Residual | mil bu | 108 | 105 | -0.9% | 118 | 0.0% | 12.4% |
| Domestic use | mil bu | 2,273 | 2,245 | -0.7% | 2,298 | -1.1% | 2.4% |
| Exports | mil bu | 1,679 | 2,260 | 0.0% | 2,090 | 1.7% | -7.5% |
| Total Use | mil bu | 3,952 | 4,505 | -0.3% | 4,389 | 0.2% | -2.6% |
| Ending Stocks | mil bu | 525 | 175 | 9.4% | 185 | 19.4% | 5.7% |
| Farm Price | \$/bu | 8.57 | 10.90 | 0.0% | 12.90 | -5.8% | 18.3% |
| Soybean to Corn Price Ratio | | 2.41 | 2.45 | | 2.37 | | -3.4% |

Accumulated US Soybean Exports and Outstanding Sales to All Countries



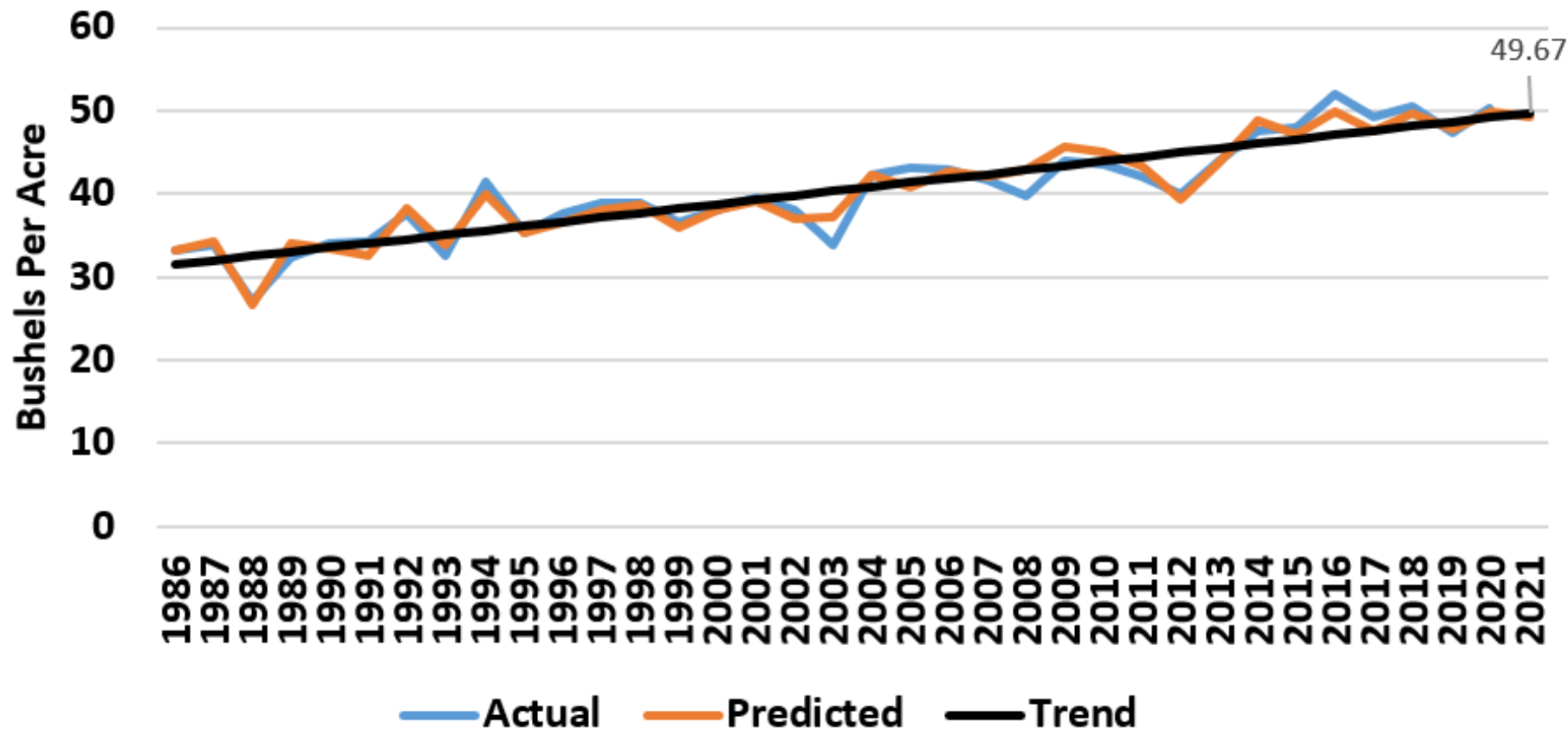
Missouri Soybean Yield Projections

Lab Estimates Based on Crop Conditions as of Sep 19, 2021

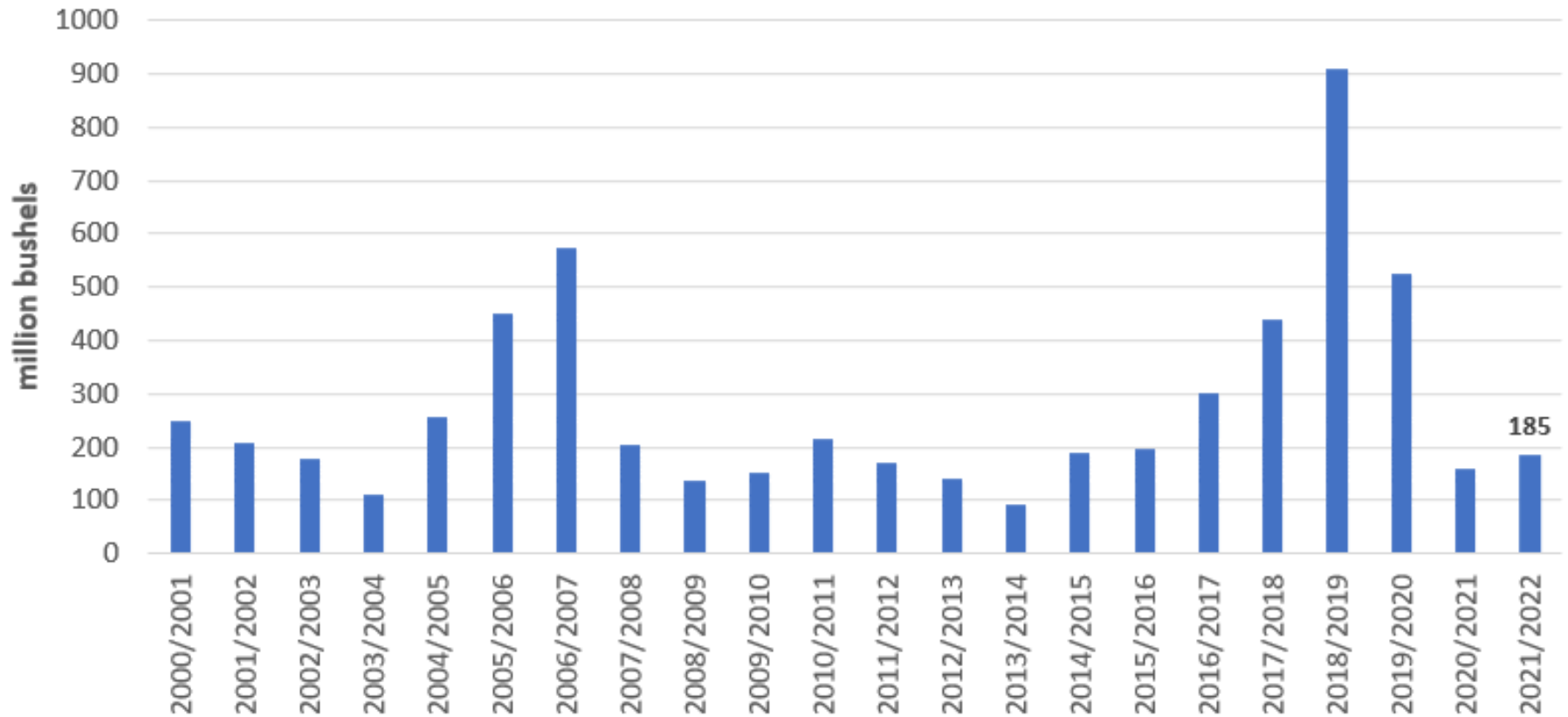


United States Soybean Yield Projections

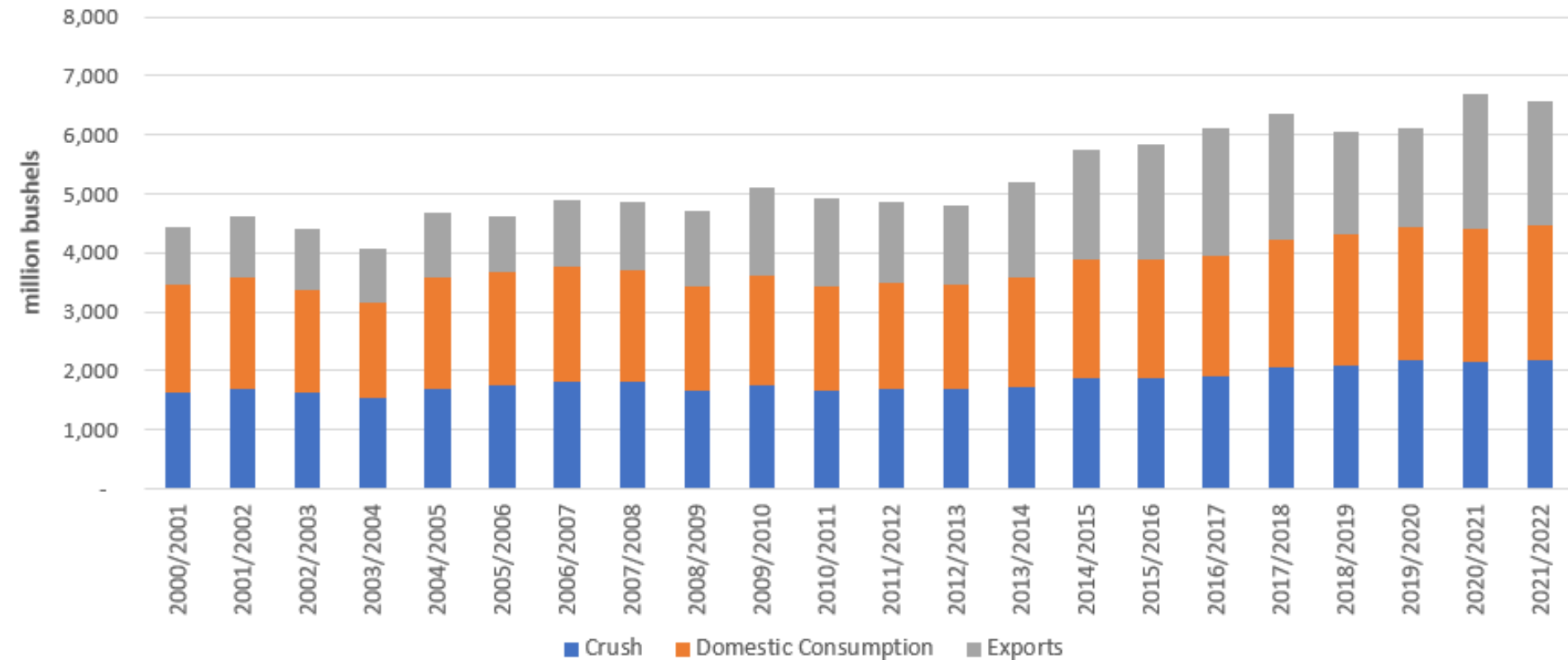
Lab Estimates Based on Crop Conditions as of Sep 19, 2021



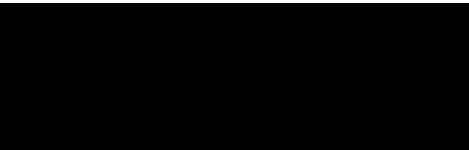
Ending Soybean Stocks for the US



US Demand For Soybeans

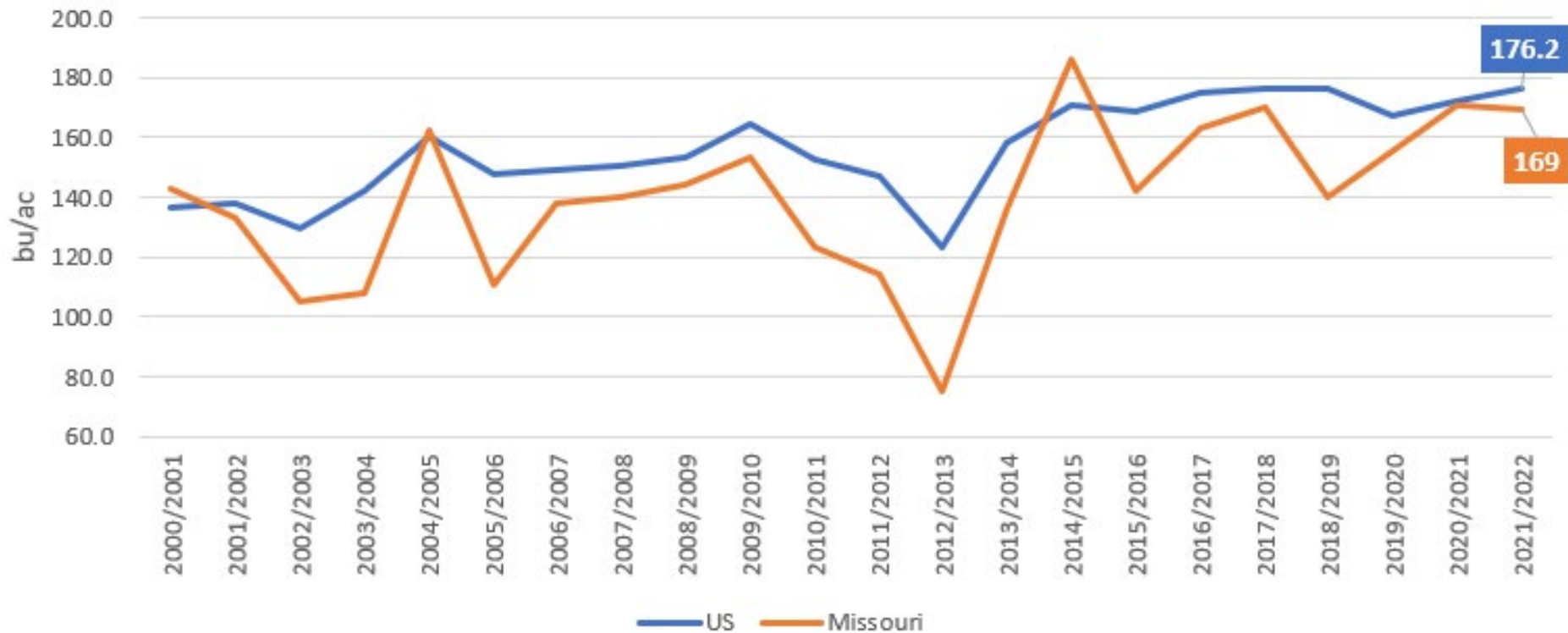


CORN OUTLOOK



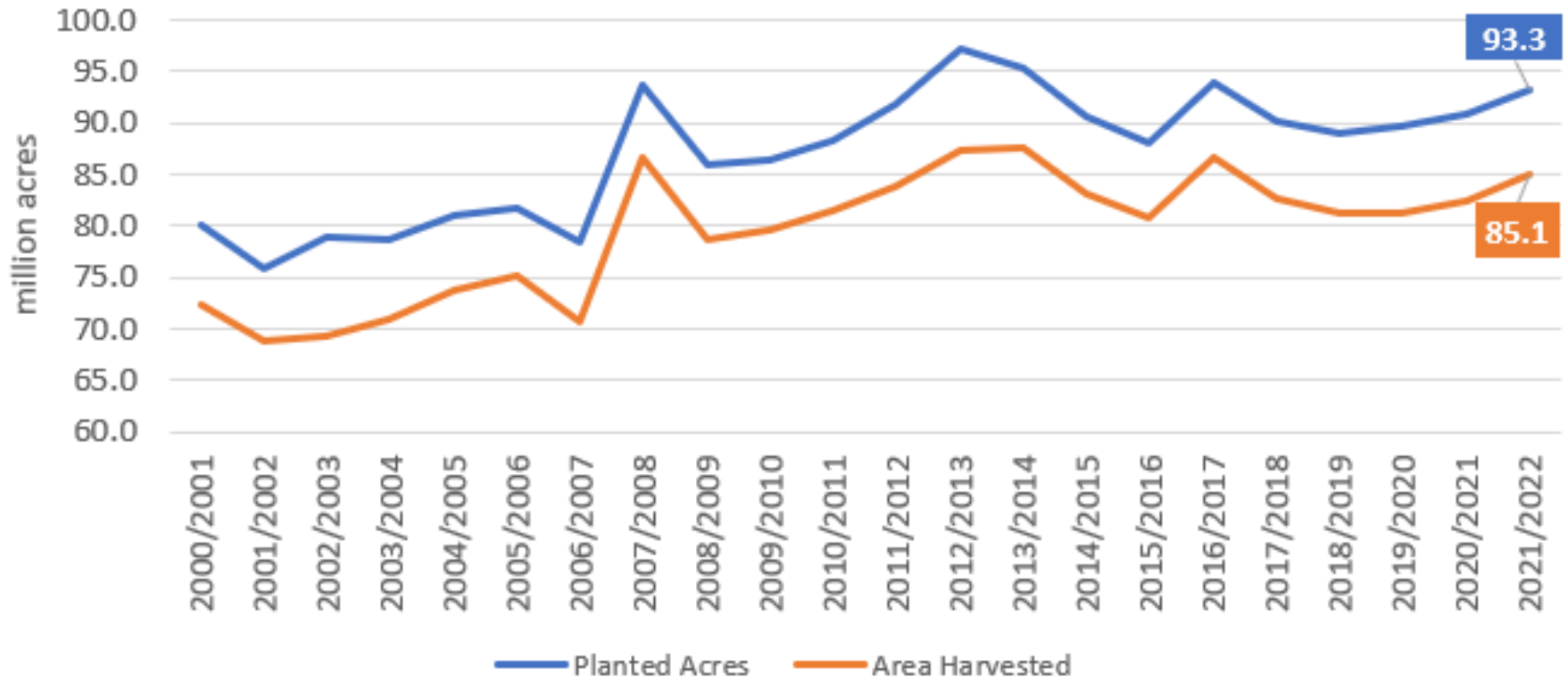
US and Missouri Corn Yield

USDA-NASS Estimates



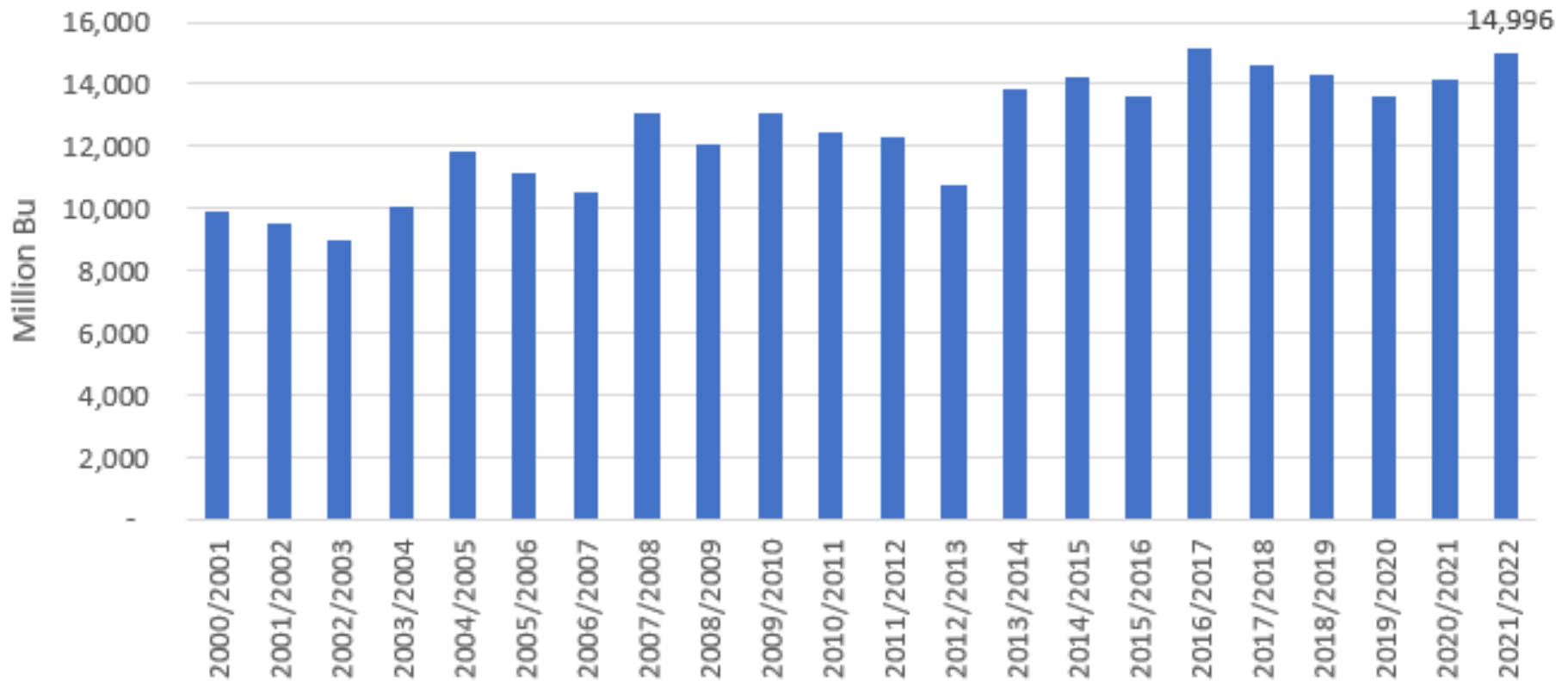
US Corn Planted and Harvested Area

USDA-NASS Estimates

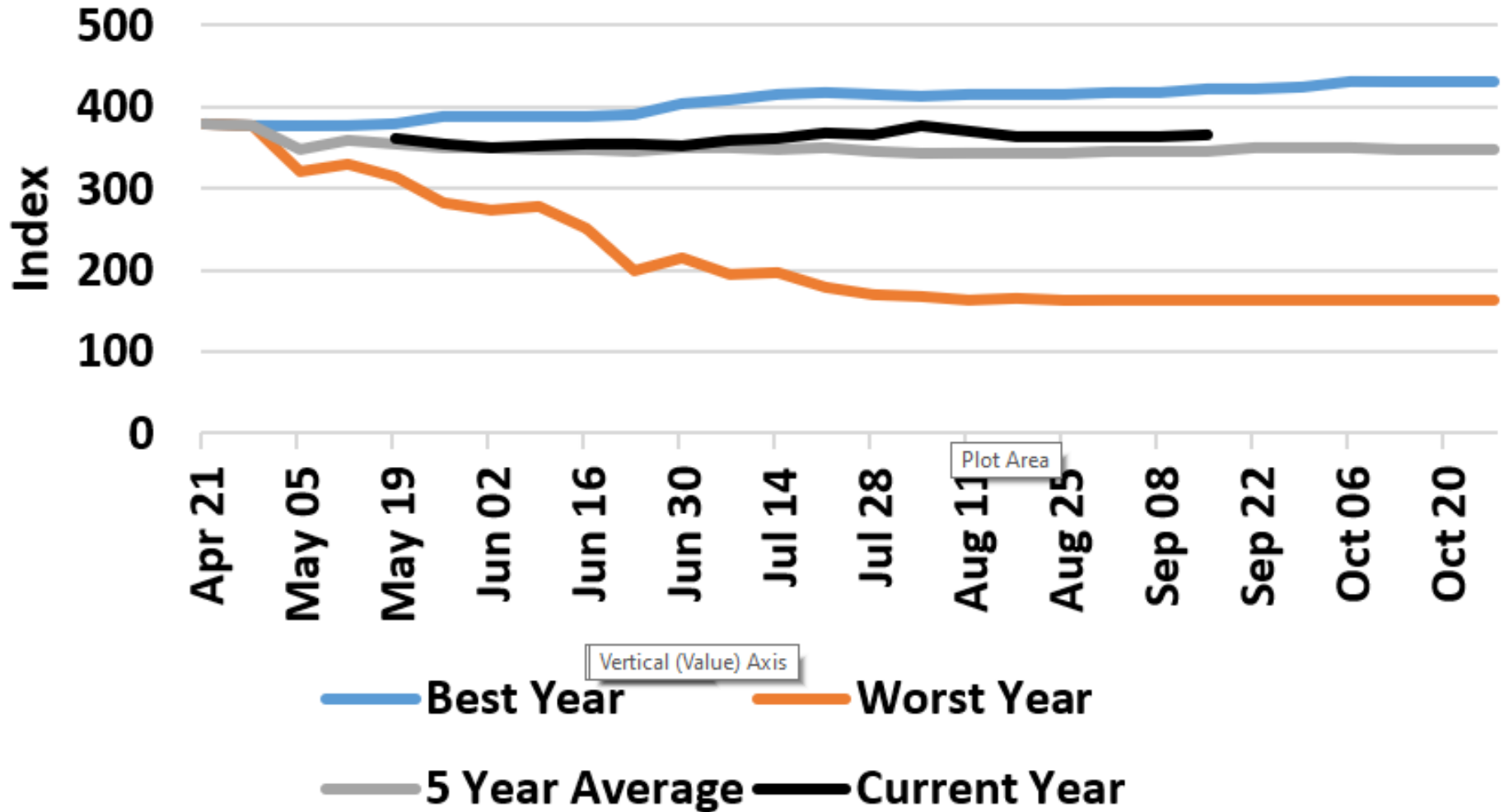


US Corn Production

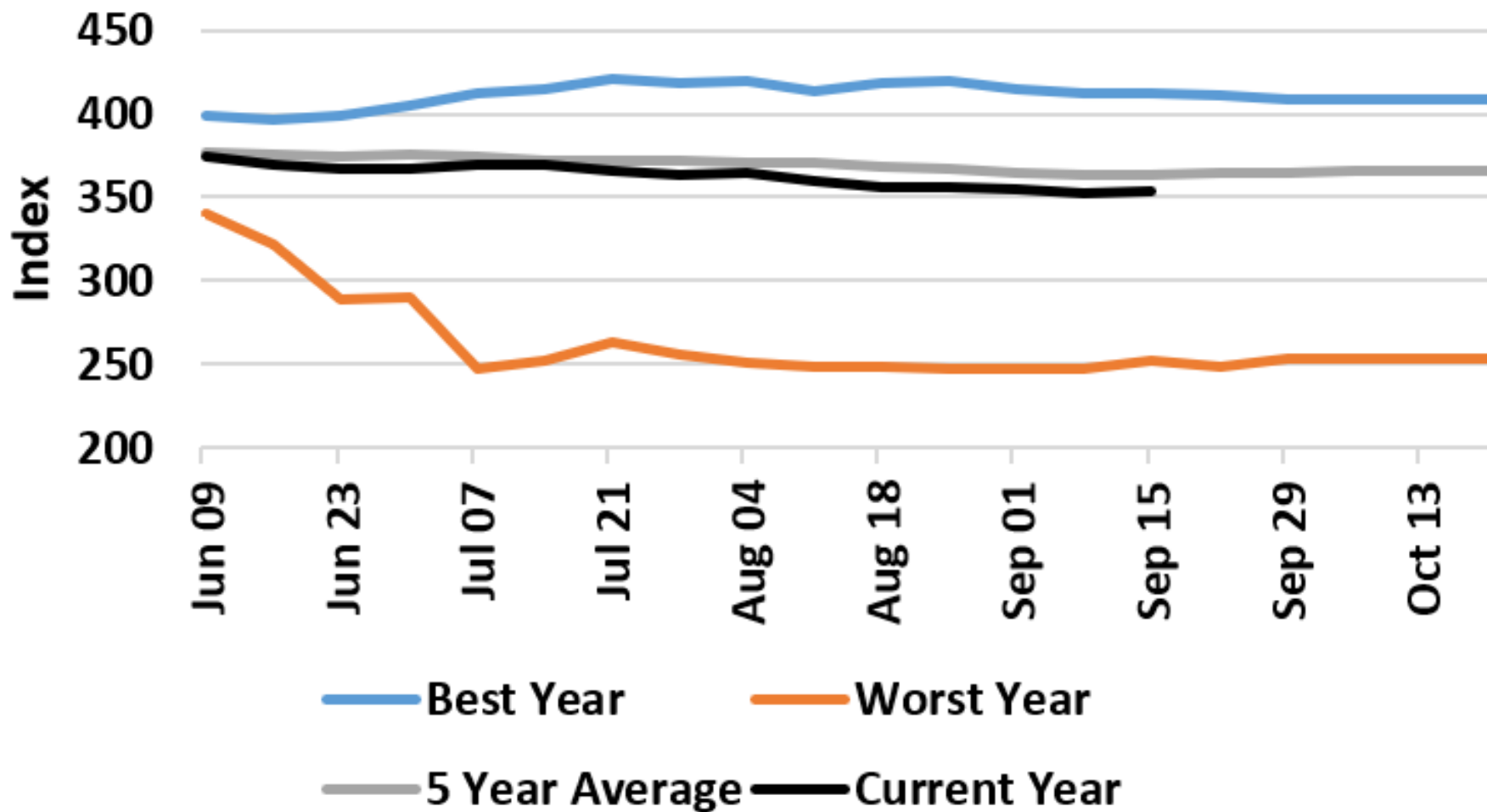
USDA-NASS Estimates



Missouri Corn Condition Index



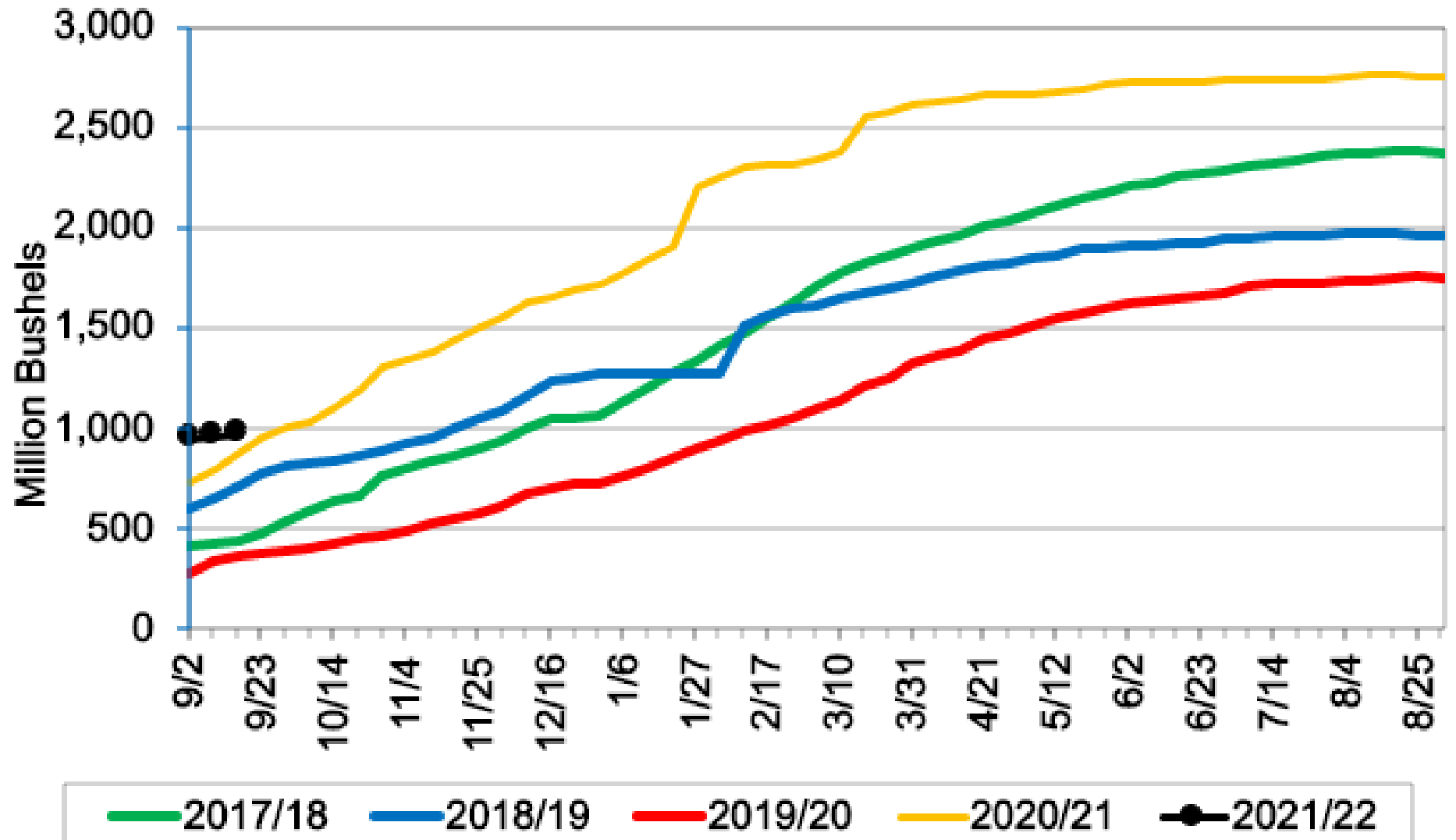
United States Corn Condition Index



September 2021 US Corn Supply and Use Update

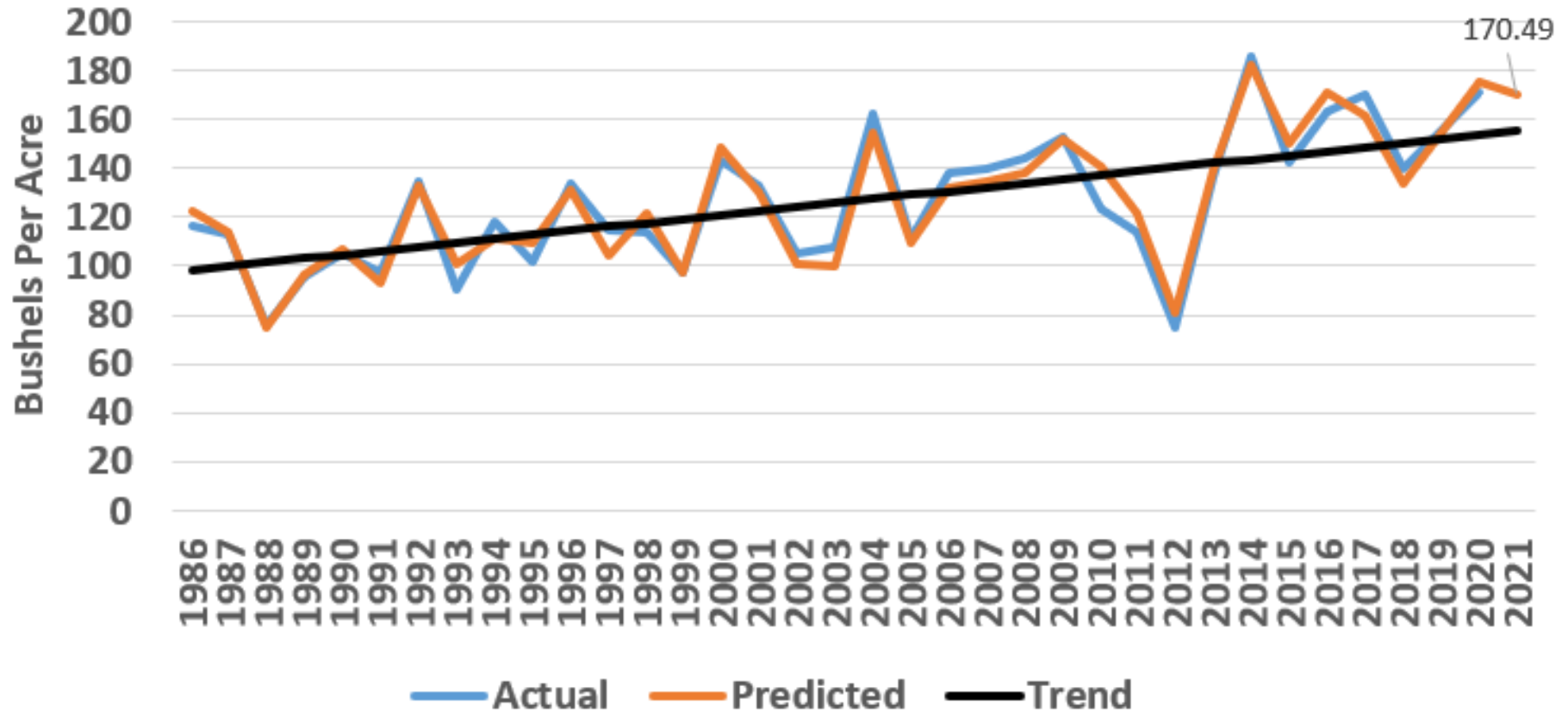
| | Units | 2019/20 | 2020/21 | | 2021/22 | | |
|---------------------------|--------|---------|--------------------|------------------------|--------------------|------------------------|-----------------------|
| | | WASDE | September WASDE | % Δ from last month | September WASDE | % Δ from last month | % Δ from last year |
| Area Planted | mil ac | 89.7 | 90.8 | 0.0% | 93.3 | 0.6% | 2.8% |
| Area Harvested | mil ac | 81.3 | 82.5 | 0.0% | 85.1 | 0.7% | 3.2% |
| Yield | bu/ac | 167.5 | 172.0 | 0.0% | 176.3 | 1.0% | 2.5% |
| Beginning Stocks | mil bu | 2,221 | 1,919 | 0.0% | 1,187 | 6.3% | -38.1% |
| Production | mil bu | 13,620 | 14,182 | 0.0% | 14,996 | 1.7% | 5.7% |
| Imports | mil bu | 42 | 25 | 0.0% | 25 | 0.0% | 0.0% |
| Total Supply | mil bu | 15,883 | 16,127 | 0.0% | 16,208 | 2.0% | 0.5% |
| Feed and Residual | mil bu | 5,900 | 5,725 | 0.0% | 5,700 | 1.3% | -0.4% |
| Food, Seed, & Industrial | mil bu | 6,286 | 6,470 | -0.6% | 6,625 | 0.0% | 2.4% |
| Ethanol & By-products | mil bu | 4,857 | 5,035 | -0.8% | 5,200 | 0.0% | 3.3% |
| Total Domestic Use | mil bu | 12,186 | 12,195 | -0.3% | 12,325 | 0.6% | 1.1% |
| Exports | mil bu | 1,777 | 2,745 | -1.1% | 2,475 | 3.1% | -9.8% |
| Total Use | mil bu | 13,963 | 14,940 | -0.5% | 14,800 | 1.0% | -0.9% |
| Ending Stocks | mil bu | 1,919 | 1,187 | 6.3% | 1,408 | 13.4% | 18.6% |
| Farm Price | \$/bu | 3.56 | 4.45 | 1.1% | 5.45 | -5.2% | 22.5% |

Accumulated Corn Exports and Outstanding Sales to All Countries



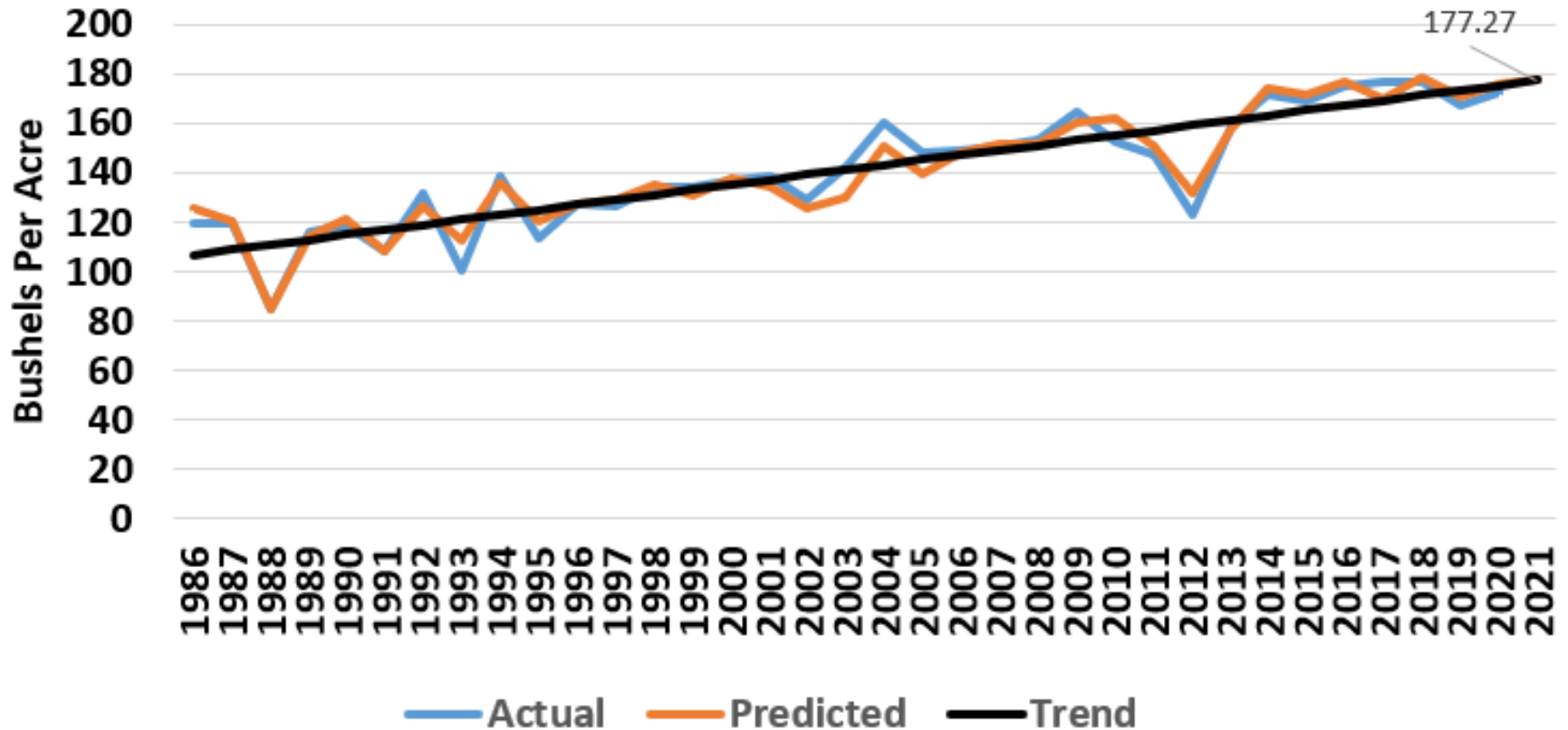
Missouri Corn Yield Projections

Student Lab Estimates Based on Crop Conditions as of Sep 16, 2021

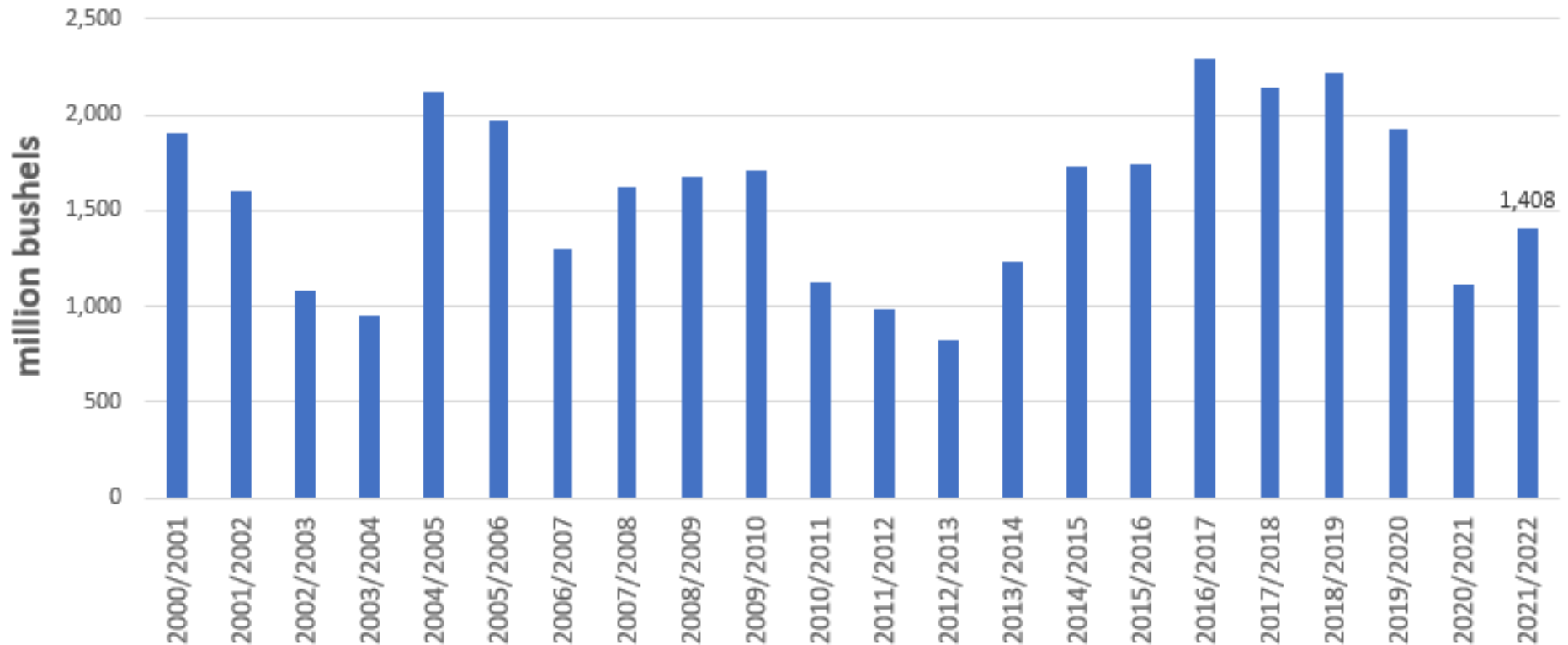


United States Corn Yield Projections

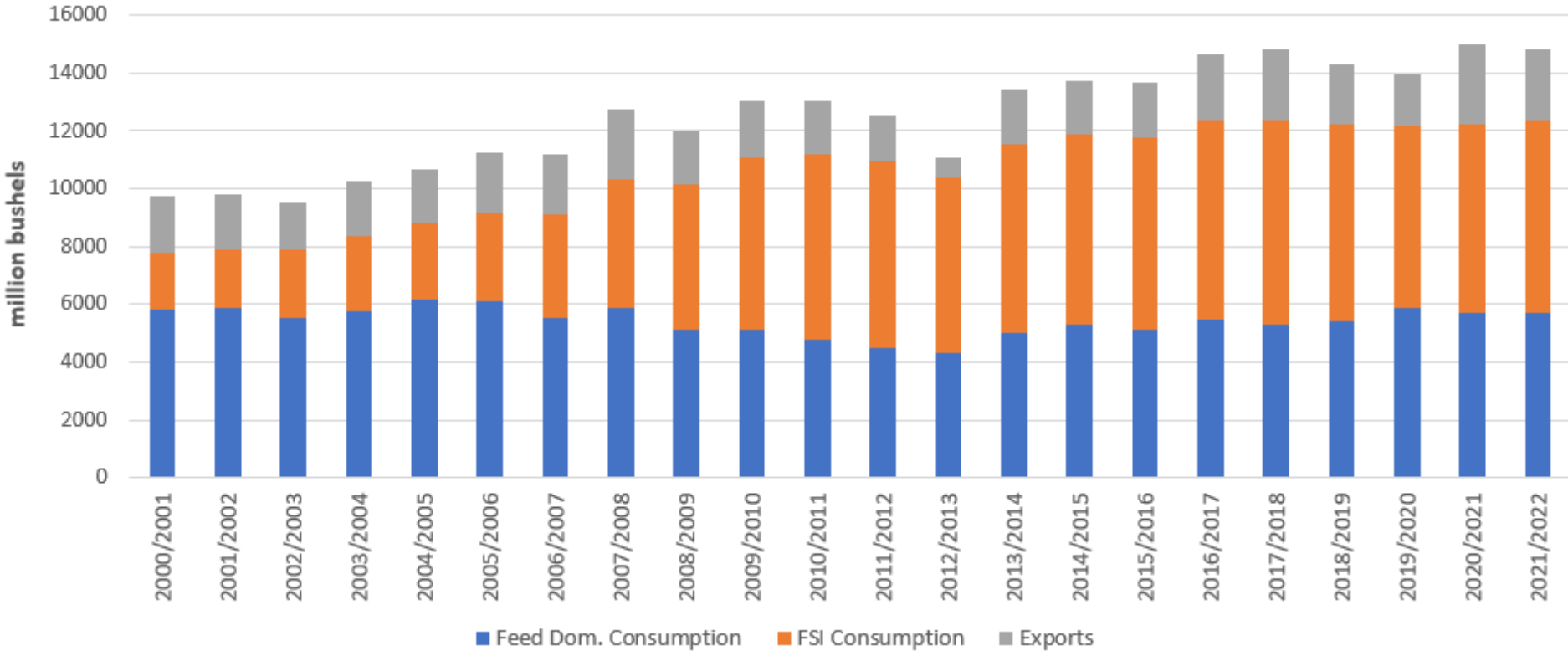
Student Lab Estimates Based on Crop Conditions as of Sep 16, 2021



Ending Corn Stocks for the US



US Demand for Corn



THANKS!

Brought to you by:

The Food and Agricultural Policy Research Institute (FAPRI)

Division of Applied Social Sciences

College of Agriculture, Food and Natural Resources

WEBSITE:

www.fapri.missouri.edu