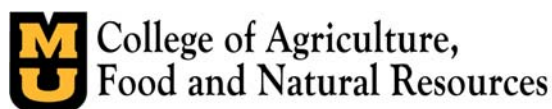




FAPRI
At the University of Missouri

**Food and Agricultural
Policy Research Institute**

Food and Agricultural Policy Research Institute (FAPRI)
College of Agriculture, Food and Natural Resources
University of Missouri
Columbia, Missouri



FAPRI Contacts

Co-Directors

Abner Womack
William Meyers

email address

womacka@missouri.edu
meyersw@missouri.edu

Crops

Pat Westhoff

westhoffp@missouri.edu

Livestock and Dairy

Scott Brown

browndo@missouri.edu

Representative Farms

Peter Zimmer

zimmelp@missouri.edu

Environmental Issues

Verel Benson

bensonv@missouri.edu

Food and Agricultural Policy Research Institute

University of Missouri-Columbia

Phone: (573) 882-3576

Fax: (573) 884-4688

Web Address: www.fapri.missouri.edu

The University of Missouri System is an Equal Opportunity/ Affirmative Action institution and is nondiscriminatory relative to race, religion, color, national origin, sex, sexual orientation, age, disability or status as a Vietnam-era veteran. Any person having inquiries concerning the University of Missouri-Columbia's compliance with implementing Title VI of the Civil Rights Act of 1964, Title IX of the Education Amendments of 1972, Section 504 of the Rehabilitation Act of 1973, the Americans With Disabilities Act of 1990, or other civil rights laws should contact the Assistant Vice Chancellor, Human Resource Services, University of Missouri-Columbia, 130 Heinkel Building, Columbia, Mo. 65211, (573) 882-4256, or the Assistant Secretary for Civil Rights, U.S. Department of Education.

FAPRI 2004 Outlook for Missouri Agriculture

FAPRI-UMC Technical Data Report 02-04

March 2004



Food and Agricultural Policy Research Institute (FAPRI)
College of Agriculture, Food and Natural Resources
University of Missouri
Columbia, Missouri
Phone: (573) 882 – 3576
<http://www.fapri.missouri.edu>

Table of Contents

| | |
|---|----|
| Foreword | 1 |
| Executive Summary | 2 |
| Missouri Farm Income | 3 |
| Missouri Crop Acreage | 4 |
| Missouri Crop Yields | 5 |
| Missouri Crop Prices | 6 |
| Missouri Livestock Inventories | 7 |
| Missouri Livestock Prices | 8 |
| Missouri Farm Income Table | 9 |
| Missouri Cash Receipts Table | 11 |
| Missouri Production Expenses Table | 13 |
| Missouri Crop Production and Prices Table | 15 |
| Missouri Cattle and Hogs Tables | 17 |
| Missouri Poultry and Dairy Tables | 19 |

Foreword

This report presents a summary of ten-year baseline projections for Missouri agricultural markets prepared by the Food and Agricultural Policy Research Institute (FAPRI). FAPRI is a joint institute of Iowa State University and the University of Missouri that provides analysis of agricultural markets and policies for Congress and other decision makers.

Each year, FAPRI prepares a set of baseline projections that provide information about the outlook for agricultural markets, farm program spending, farm income, and a variety of other indicators. This baseline then serves as the point of comparison for analyses of alternative policy options. This Missouri baseline projection was prepared after the conclusion of the U.S. baseline process in early February.

The baseline is not a forecast of what will happen, but rather a projection of what could happen under a particular set of assumptions. Current global policies are held in place, even when there is reason to suspect changes are likely. For purposes of the baseline, we assume that when the Farm Security and Rural Investment Act (the 2002 farm bill) is set to expire in 2007, all of its provisions will be extended indefinitely. In addition to assuming that current policies remain in place, we assume that:

- average weather conditions prevail in the United States and around the world,
- the U.S. and world economies grow in line with projections developed by Global Insight, and
- productivity generally increases in line with past trends.

In reality, these assumptions are certain to be violated and actual market outcomes will differ from the baseline projections reported here. With these caveats in mind, here are some key features of this year's outlook for Missouri agriculture:

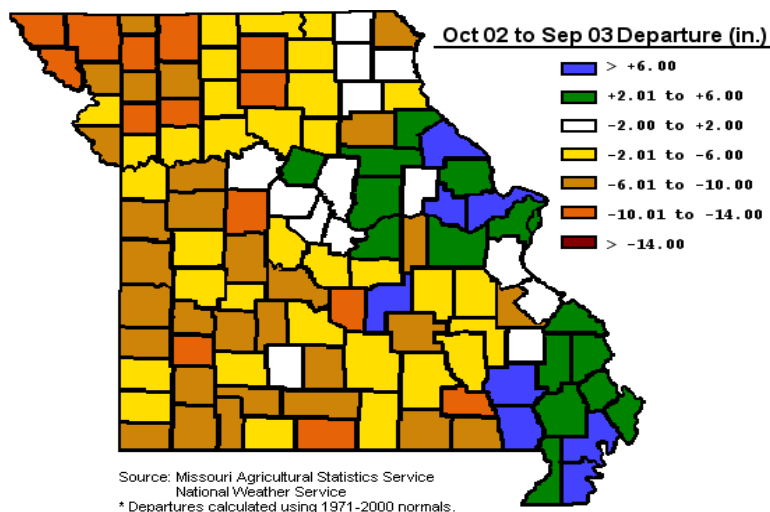
- Projected reductions in livestock receipts and government payments cause Missouri net farm income to decline in 2004. Net farm income should then rise with livestock receipts in 2005 and 2006.
- Total Missouri area devoted to seven major crops (planted area for corn, soybeans, wheat, sorghum, cotton, and rice and harvested area for hay) should remain around 14 million acres in 2004. Assuming a return to more normal weather conditions, 2004 yields should increase for corn, soybeans, and sorghum.
- Soybean prices reached the highest levels in years in early 2004, but are likely to be much lower for the crop harvested in the fall of 2004 if U.S. yields recover from the very low levels of 2003. Projected price changes for other crops are smaller, and actual outcomes will depend on yields and global demand.
- Though cattle prices fell after the discovery of BSE in Washington state in December 2003, strong beef demand in the U.S. and relatively short supplies will allow prices to increase again once export markets are re-opened.
- Annual average prices for hogs, turkeys, and eggs are expected to be about the same in 2004 as in 2003.

Executive Summary

- Dry weather over much of the state severely hampered yields for many crops in 2003. The western part of Missouri suffered most from lack of moisture.

- An examination of corn and soybean yields by crop reporting district for 2003 nearly mirrors the precipitation graph, with the lowest yields occurring in the western part and the highest yields realized in the eastern part of the state.

- This outlook assumes average weather in 2004, so another dry year would alter even the short-term outlook.

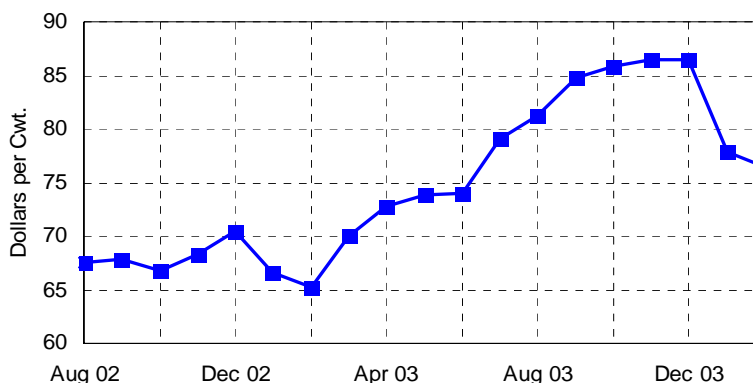


Missouri Average Cattle Price

- Events occurring outside of Missouri have had significant impacts on Missouri cattle prices recently.

- The discovery of BSE in Canada in May 2003 eliminated cattle imports from Canada, and drastically increased cattle prices in the U.S. and Missouri.

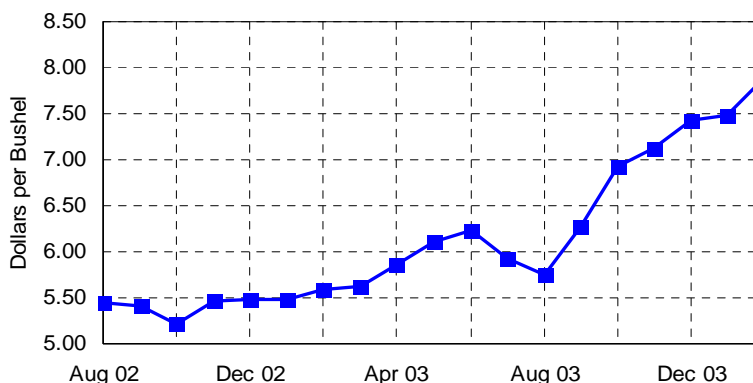
- The discovery of BSE in Washington state in Dec. 2003 has caused prices to fall, but strong beef demand in the U.S. has allowed prices to stabilize.



Missouri Soybean Farm Price

- Soybean prices increased by more than \$2.00 per bushel between August 2003 and January 2004.

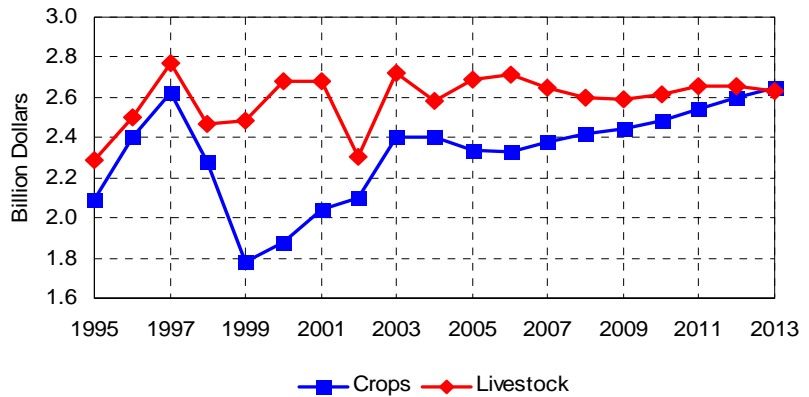
- Though prices should remain strong during the early part of 2004, prices are likely to fall sharply for soybeans harvested this fall.



Missouri Farm Income

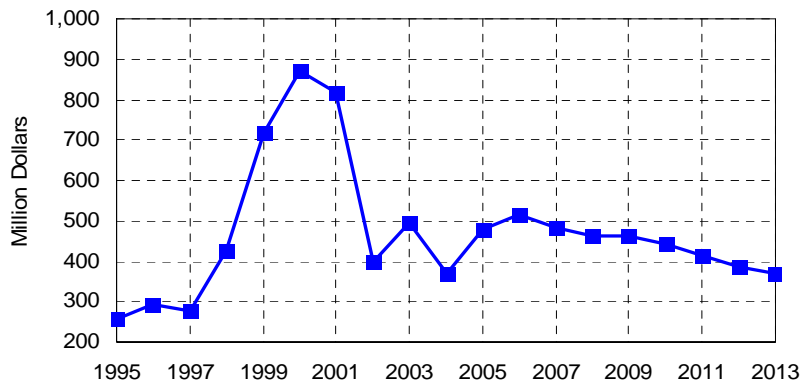
Cash Receipts

- The drop in 2002 cattle prices accounted for much of the drop in livestock receipts for that year, and the recovery in 2003 cattle prices led the increase in livestock receipts for 2003.
- Higher soybean receipts propelled the large jump in 2003 crop cash receipts, as the increase in soybean prices more than offset the impact of low yields.
- Weakening cattle prices and slowly strengthening crop prices allow crop cash receipts to eclipse livestock receipts by 2013.



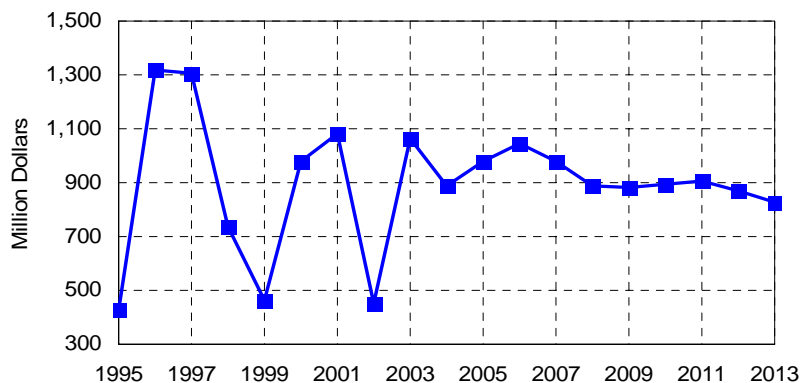
Government payments

- Government payments to Missouri farmers under the 2002 Farm Bill are much lower than 1999-2001 levels.
- Direct payments total over \$175 million per year. Payments under the counter-cyclical payment and loan programs increase when crop prices fall in 2005 and 2006.
- No ad hoc or emergency assistance payments are assumed after 2003. These payments accounted for nearly \$1 billion dollars in total from 1998-2003.



Net Farm Income

- From 2002 to 2013, changes in Missouri net farm income generally reflect changes in cattle prices in particular and livestock receipts in general, with peaks in 2003 and 2006.
- Given the nature of farm programs under the 2002 Farm Bill, changes in projected crop receipts are largely offset by changes in government payments.
- Farm production costs increase by an average of 1 percent per year between 2004 and 2013.



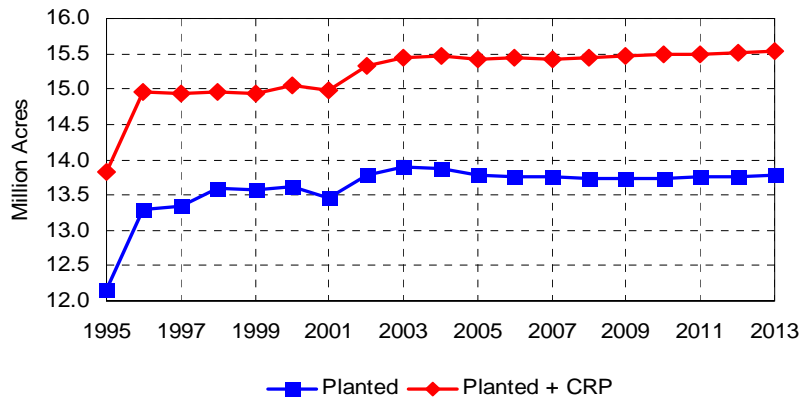
Missouri Crop Acreage

Missouri Land Use

- Total area devoted to seven major crops in Missouri reached 13.9 million acres in 2003, the highest level since 1995.

- This total area planted is expected to decline slightly as conservation reserve acreage expands.

- CRP area totaled just over 1.55 million acres in 2003, and is assumed to gradually increase to 1.75 million acres by 2010.

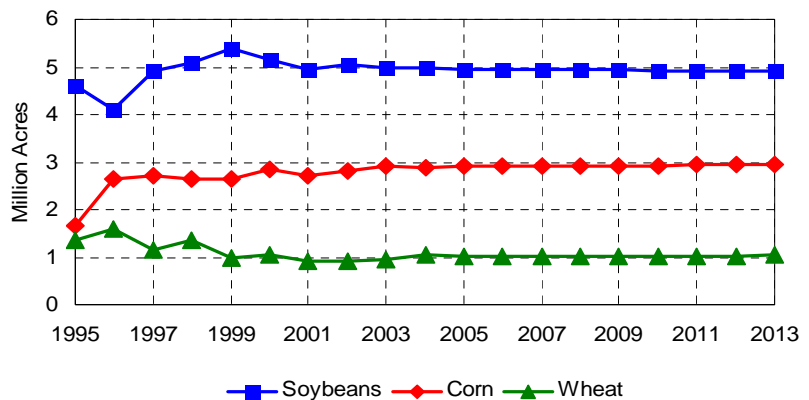


Missouri Planted Area

- Soybeans continue to be the most widely planted crop in Missouri, and soybean area should stay near 5 million acres over the next decade.

- Corn acreage will show small increases in the years to come, as corn returns remain strong relative to those for other crops.

- Reversing a downward trend, wheat area increased in 2003, and early estimates indicate a further increase in 2004.

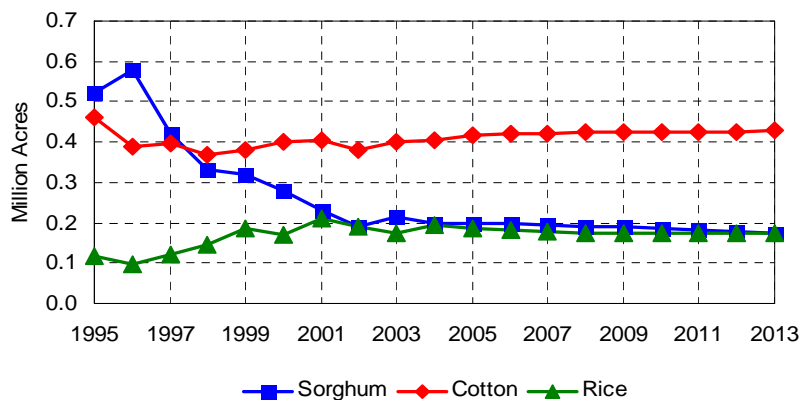


Missouri Planted Area

- The long-run trend of declining Missouri sorghum acreage was temporarily reversed in 2003.

- Cotton acres should increase slowly, as projected returns are more attractive than those experienced from 1999-2002.

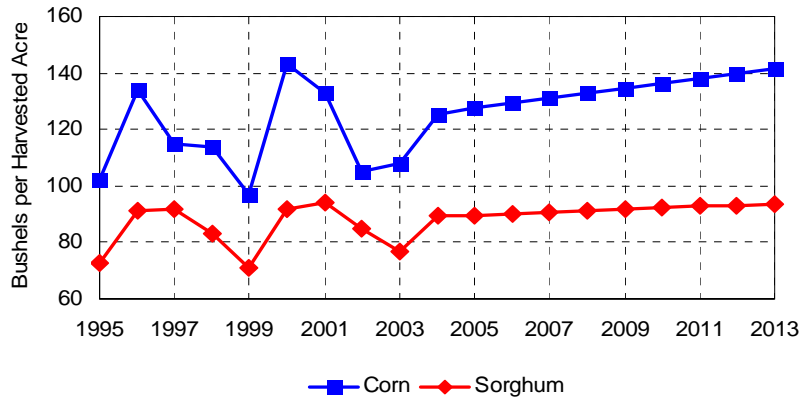
- Rice area declined by 35 thousand acres from 2001 to 2003, but stronger returns should lead to more rice acreage in 2004.



Missouri Crop Yields

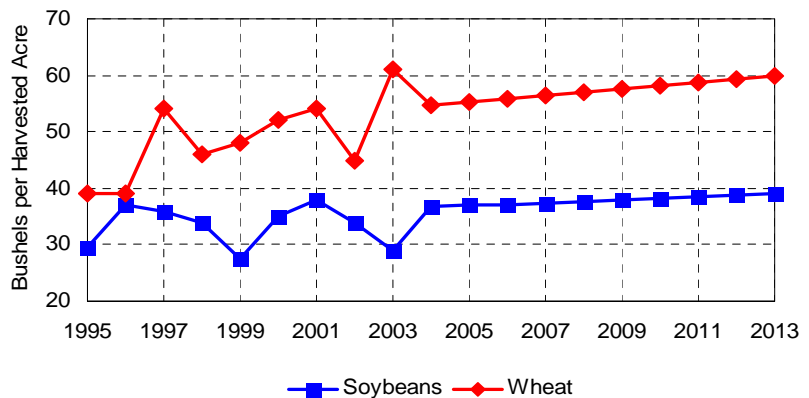
- Abnormal weather over parts of the state continued to hamper corn and sorghum yields in 2003.
- Average yields registered 108 bushels per acre for corn and 77 bushels per acre for sorghum in 2003.
- Assuming normal weather conditions, yields recover in 2004 and reach 142 bushels per acre for corn and 94 bushels per acre for sorghum by 2013.

Missouri Yields



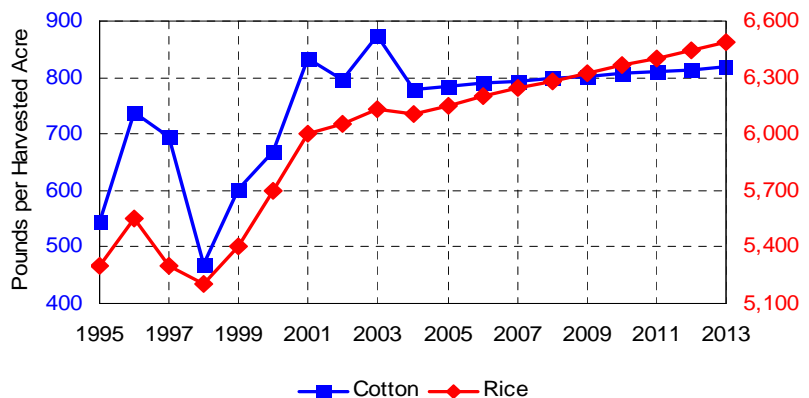
- Soybean yields also suffered from the weather in 2003, while wheat yields set a record at 61 bushels per acre.
- With average growing conditions, soybean yields recover to average 37 bushels per acre in 2004, then show slow growth.
- Wheat yields moderate to 55 bushels per acre in 2004, before climbing to 60 bushels per acre in 2013.

Missouri Yields



- Cotton and rice yields also set records in 2003, reaching 874 and 6,131 pounds per acre, respectively.
- Cotton yields are projected to fall below 800 pounds per acre in 2004, then slowly climb at rates of four to five pounds per year.
- Rice yields also moderate in 2004, but then resume strong growth to approach 6,500 pounds per acre in 2013.

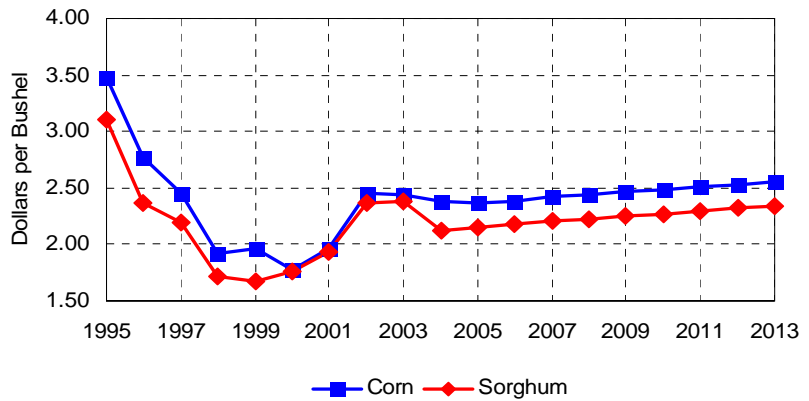
Missouri Yields



Missouri Crop Prices

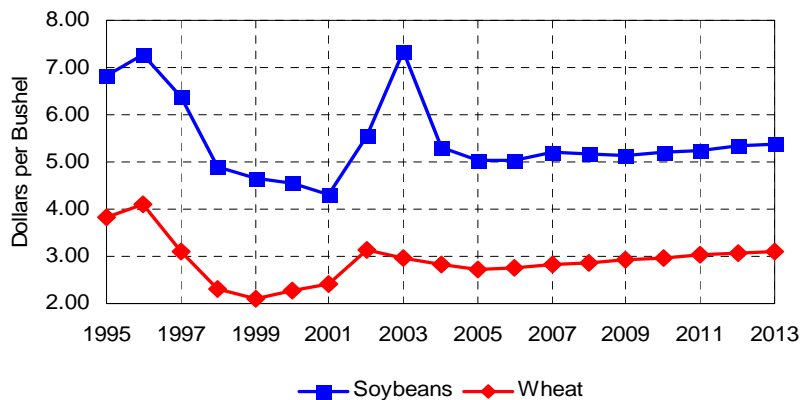
Crop Prices

- Corn and sorghum prices increased sharply in 2002/03 in response to below-average U.S. yields.
- Feed grain prices have not declined in 2003/04, in spite of a record U.S. corn crop, as U.S. and global demand have strengthened.
- Projected prices remain well above 1998-2001 lows, but below the highs of 1995/96 and 1996/97.



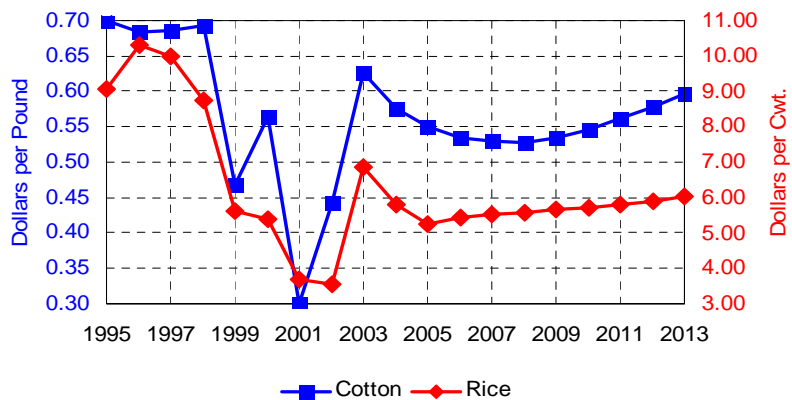
Crop Prices

- The Missouri soybean price will top \$7 per bushel for the 2003/04 marketing year amid tighter supplies.
- Wheat prices eclipsed \$3 per bushel in 2002/03, and will hold most of that gain in 2003/04.
- Assuming a return to more normal yields, soybean prices fall back sharply in 2004/05 and remain only a little above the \$5 per bushel loan rate in subsequent years.



Crop Prices

- Cotton prices have more than doubled from their 2001/02 average, and should stay above 50 cents per pound on an annual basis through 2013.
- Rice prices will average near \$7 per cwt. for 2003/04, but then are projected to decline in 2004/05 and 2005/06.



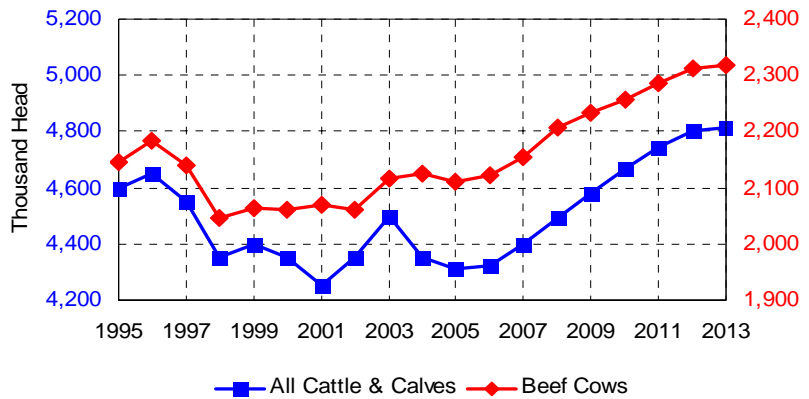
Missouri Livestock Inventories

Jan. 1 Cattle Inventories

▪ The number of cattle and calves in Missouri fell to 4.35 million head for 2004, after bucking the national trend with larger inventories in 2002 and 2003.

▪ Beef cow numbers increased in Missouri for the fourth time in six years. With 2.125 million head of beef cows, Missouri remains the second largest state in terms of beef cows, trailing only Texas.

▪ Attractive returns will allow inventories to grow for much of the projection.

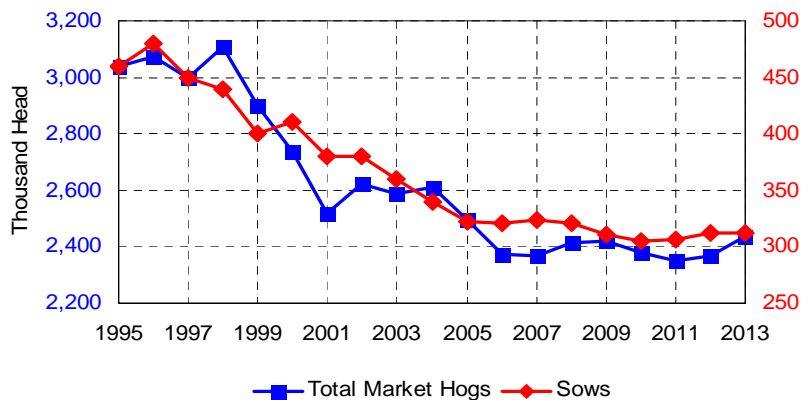


▪ The number of sows in Missouri fell to 340 thousand head as of Dec. 1, 2003.

▪ Market hog inventories remained essentially flat for the third year in a row.

▪ The sow herd will continue to decline in Missouri due to relatively weak hog prices, though productivity gains and continued large shipments of feeder pigs into the state will keep hog inventories basically flat after 2006.

Previous Year Dec. 1 Hog Inventories

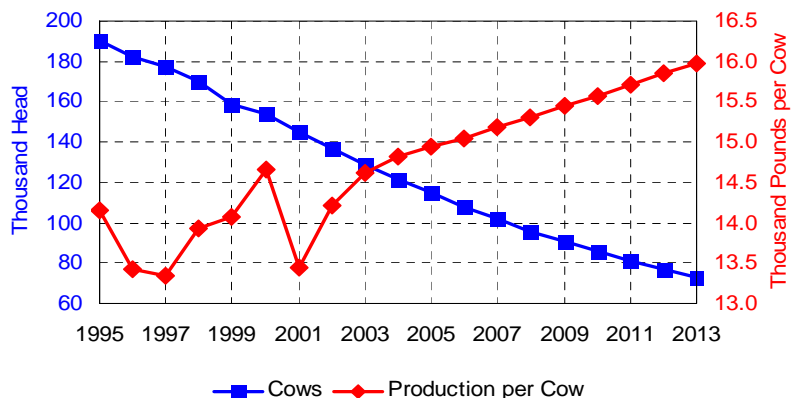


Dairy Cows and Productivity

▪ The number of dairy cows in Missouri continues to follow the national trend of long-term decline.

▪ By 2013, the number of dairy cows in the state will be roughly half of the 2001 inventory.

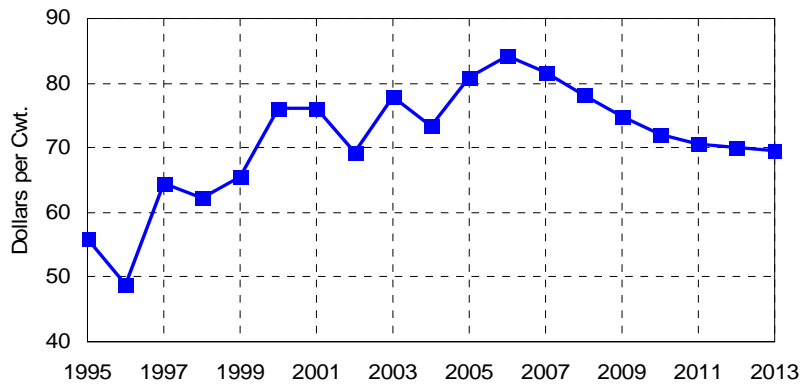
▪ Average milk production per cow will approach 16 thousand pounds in 2013.



Missouri Livestock Prices

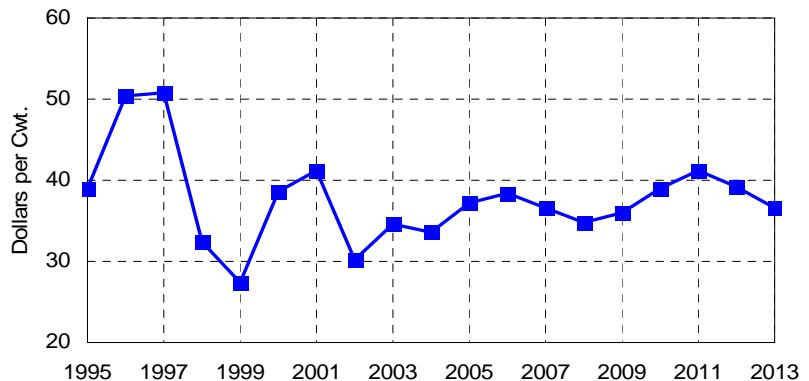
Average Cattle Price

- Tight supplies throughout the U.S. and world beef sectors will allow Missouri average cattle prices to top \$80 per hundredweight in 2005 and 2006.
- Once the national cattle herd is able to rebuild, prices will begin to decline for the rest of the projection.
- This price outlook assumes no more disease outbreaks in the U.S., and continued strong consumer demand. Removing either of these assumptions could significantly drop prices.



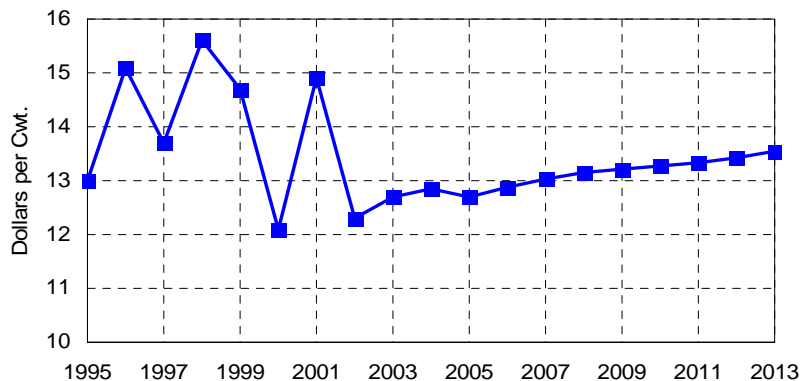
Average Hog Price

- The average hog price in Missouri failed to reach \$35 dollars per hundredweight for the fourth time in six years in 2003.
- Though sow numbers have dropped in Missouri and the U.S., productivity growth and high levels of Canadian hog imports have kept pork production growing and prices relatively weak.
- Hog prices average between \$37 and \$38 dollars per hundredweight during the projection period.



All Milk Price

- The Missouri all milk price strengthened during the last four months of 2003, allowing the annual average to improve over the low level of 2002.
- The 2004 all milk price will increase relative to the annual average of 2003.
- Longer-term, all milk prices will exhibit slow, steady growth, typically falling in the \$13.00-\$13.50 range.



Missouri Farm Income

| | 1992 | 1993 | 1994 | 1995 | 1996 | 1997 | 1998 | 1999 | 2000 | 2001 | 2002 |
|------------------------------|-------------------|-------|-------|-------|-------|-------|-------|-------|-------|-------|-------|
| | (Million Dollars) | | | | | | | | | | |
| Cash Receipts | 4,229 | 4,160 | 4,502 | 4,374 | 4,896 | 5,397 | 4,745 | 4,261 | 4,560 | 4,723 | 4,402 |
| Crops | 2,064 | 1,839 | 2,096 | 2,089 | 2,399 | 2,625 | 2,276 | 1,776 | 1,879 | 2,039 | 2,100 |
| Livestock | 2,165 | 2,321 | 2,406 | 2,285 | 2,497 | 2,772 | 2,469 | 2,485 | 2,680 | 2,684 | 2,302 |
| Home Consumption | 33 | 32 | 29 | 26 | 23 | 29 | 28 | 30 | 40 | 38 | 36 |
| Crops | 7 | 8 | 7 | 7 | 7 | 7 | 7 | 7 | 7 | 7 | 7 |
| Livestock | 25 | 24 | 22 | 19 | 16 | 21 | 21 | 22 | 32 | 31 | 29 |
| Inventory Adjustment | 219 | -123 | 97 | -185 | 485 | -2 | -55 | -158 | 90 | 117 | -18 |
| Crops | 153 | -257 | 216 | -213 | 511 | 65 | -92 | -120 | 173 | 42 | -115 |
| Livestock | 66 | 133 | -119 | 28 | -26 | -66 | 37 | -39 | -83 | 75 | 97 |
| Services and Forestry | 421 | 475 | 524 | 604 | 631 | 659 | 707 | 737 | 779 | 804 | 837 |
| Mach. Hire & Cust. Work | 53 | 54 | 57 | 71 | 52 | 70 | 61 | 68 | 91 | 65 | 82 |
| Forest Products Sold | 6 | 8 | 8 | 8 | 8 | 9 | 9 | 9 | 9 | 9 | 9 |
| Other Farm Income | 85 | 99 | 99 | 134 | 148 | 160 | 202 | 193 | 169 | 188 | 207 |
| Imputed Rental Value | 278 | 313 | 360 | 390 | 422 | 420 | 435 | 467 | 510 | 542 | 539 |
| Ag Sector Output | 4,902 | 4,544 | 5,153 | 4,818 | 6,035 | 6,083 | 5,424 | 4,870 | 5,469 | 5,682 | 5,257 |
| Direct Gov. Payments | 294 | 455 | 267 | 257 | 291 | 278 | 428 | 717 | 869 | 817 | 397 |
| Production Expenses | 4,344 | 4,418 | 4,608 | 4,646 | 5,006 | 5,057 | 5,114 | 5,121 | 5,362 | 5,418 | 5,203 |
| Net Farm Income | 852 | 581 | 812 | 429 | 1,321 | 1,304 | 738 | 466 | 976 | 1,081 | 451 |
| Real 1997 \$ | 928 | 623 | 860 | 439 | 1,320 | 1,304 | 757 | 474 | 938 | 1,027 | 439 |

Missouri Farm Income

| | 2003 | 2004 | 2005 | 2006 | 2007 | 2008 | 2009 | 2010 | 2011 | 2012 | 2013 |
|------------------------------|-------------------|-------|-------|-------|-------|-------|-------|-------|-------|-------|-------|
| | (Million Dollars) | | | | | | | | | | |
| Cash Receipts | 5,124 | 4,984 | 5,028 | 5,045 | 5,032 | 5,013 | 5,038 | 5,104 | 5,199 | 5,250 | 5,283 |
| Crops | 2,400 | 2,404 | 2,336 | 2,328 | 2,380 | 2,417 | 2,446 | 2,488 | 2,539 | 2,596 | 2,652 |
| Livestock | 2,724 | 2,580 | 2,692 | 2,717 | 2,651 | 2,596 | 2,592 | 2,616 | 2,660 | 2,654 | 2,631 |
| Home Consumption | 38 | 37 | 38 | 37 | 37 | 37 | 36 | 36 | 36 | 36 | 36 |
| Crops | 7 | 7 | 7 | 7 | 7 | 7 | 7 | 7 | 7 | 7 | 7 |
| Livestock | 31 | 30 | 30 | 30 | 30 | 29 | 29 | 29 | 29 | 29 | 28 |
| Inventory Adjustment | 30 | 138 | 43 | 69 | 84 | 65 | 60 | 62 | 65 | 62 | 52 |
| Crops | -2 | 129 | 22 | 24 | 26 | 25 | 25 | 25 | 26 | 27 | 27 |
| Livestock | 32 | 10 | 20 | 45 | 58 | 40 | 34 | 37 | 39 | 35 | 25 |
| Services and Forestry | 792 | 827 | 865 | 876 | 884 | 919 | 958 | 969 | 980 | 991 | 1,003 |
| Mach. Hire & Cust. Work | 80 | 81 | 81 | 82 | 83 | 84 | 85 | 86 | 87 | 88 | 90 |
| Forest Products Sold | 9 | 9 | 9 | 9 | 9 | 9 | 9 | 9 | 9 | 9 | 9 |
| Other Farm Income | 191 | 191 | 191 | 191 | 192 | 194 | 194 | 195 | 196 | 197 | 198 |
| Imputed Rental Value | 513 | 547 | 584 | 594 | 599 | 632 | 669 | 679 | 688 | 696 | 706 |
| Ag Sector Output | 5,984 | 5,987 | 5,973 | 6,027 | 6,036 | 6,034 | 6,092 | 6,171 | 6,280 | 6,338 | 6,373 |
| Direct Gov. Payments | 497 | 369 | 480 | 517 | 484 | 461 | 461 | 444 | 416 | 387 | 369 |
| Production Expenses | 5,420 | 5,467 | 5,475 | 5,499 | 5,542 | 5,608 | 5,673 | 5,723 | 5,788 | 5,853 | 5,916 |
| Net Farm Income | 1,061 | 889 | 978 | 1,045 | 977 | 887 | 880 | 892 | 908 | 872 | 826 |
| Real 1997 \$ | 981 | 822 | 903 | 960 | 886 | 796 | 781 | 780 | 781 | 738 | 687 |

Missouri Cash Receipts

| | 1992 | 1993 | 1994 | 1995 | 1996 | 1997 | 1998 | 1999 | 2000 | 2001 | 2002 |
|-------------------------|-------------------|-------|-------|-------|-------|-------|-------|-------|-------|-------|-------|
| | (Million Dollars) | | | | | | | | | | |
| Crops | 2,064 | 1,839 | 2,096 | 2,089 | 2,399 | 2,625 | 2,276 | 1,776 | 1,879 | 2,039 | 2,100 |
| Corn | 496 | 450 | 474 | 431 | 693 | 670 | 584 | 437 | 557 | 624 | 615 |
| Sorghum | 86 | 74 | 91 | 84 | 92 | 78 | 47 | 35 | 36 | 42 | 37 |
| Hay | 96 | 124 | 104 | 83 | 99 | 111 | 120 | 121 | 118 | 156 | 141 |
| Wheat | 188 | 137 | 154 | 190 | 170 | 194 | 128 | 85 | 127 | 97 | 104 |
| Rice | 36 | 29 | 45 | 45 | 54 | 58 | 64 | 58 | 49 | 47 | 42 |
| Soybeans | 861 | 764 | 862 | 896 | 916 | 1,155 | 1,008 | 743 | 731 | 776 | 866 |
| Cotton | 159 | 126 | 216 | 204 | 213 | 193 | 161 | 127 | 100 | 122 | 129 |
| Other Crops | 141 | 135 | 149 | 155 | 160 | 167 | 165 | 169 | 162 | 175 | 166 |
| Livestock | 2,165 | 2,321 | 2,406 | 2,285 | 2,497 | 2,772 | 2,469 | 2,485 | 2,680 | 2,684 | 2,302 |
| Cattle and Calves | 882 | 898 | 954 | 707 | 644 | 925 | 759 | 870 | 1,045 | 926 | 821 |
| Hogs | 447 | 544 | 501 | 589 | 696 | 741 | 540 | 452 | 588 | 591 | 427 |
| Dairy | 378 | 357 | 352 | 344 | 363 | 319 | 365 | 324 | 270 | 286 | 236 |
| Broilers | 184 | 214 | 250 | 280 | 397 | 403 | 417 | 416 | 356 | 449 | 377 |
| Turkeys | 148 | 179 | 205 | 216 | 232 | 225 | 239 | 277 | 272 | 271 | 282 |
| Chicken Eggs | 56 | 63 | 62 | 69 | 92 | 85 | 77 | 73 | 70 | 76 | 76 |
| Other Livestock/Poultry | 70 | 67 | 82 | 78 | 73 | 74 | 72 | 73 | 79 | 85 | 83 |
| Total Receipts | 4,229 | 4,160 | 4,502 | 4,374 | 4,896 | 5,397 | 4,745 | 4,261 | 4,560 | 4,723 | 4,402 |

Missouri Cash Receipts

| | 2003 | 2004 | 2005 | 2006 | 2007 | 2008 | 2009 | 2010 | 2011 | 2012 | 2013 |
|-------------------------|-------------------|-------|-------|-------|-------|-------|-------|-------|-------|-------|-------|
| | (Million Dollars) | | | | | | | | | | |
| Crops | 2,400 | 2,404 | 2,336 | 2,328 | 2,380 | 2,417 | 2,446 | 2,488 | 2,539 | 2,596 | 2,652 |
| Corn | 634 | 691 | 715 | 724 | 741 | 757 | 772 | 788 | 804 | 819 | 833 |
| Sorghum | 37 | 36 | 36 | 36 | 37 | 37 | 37 | 37 | 37 | 36 | 36 |
| Hay | 135 | 127 | 122 | 121 | 122 | 124 | 126 | 129 | 132 | 136 | 139 |
| Wheat | 153 | 144 | 136 | 137 | 141 | 146 | 150 | 154 | 158 | 163 | 167 |
| Rice | 56 | 67 | 61 | 57 | 58 | 58 | 59 | 60 | 61 | 62 | 63 |
| Soybeans | 996 | 966 | 904 | 892 | 919 | 929 | 929 | 940 | 957 | 978 | 998 |
| Cotton | 208 | 190 | 180 | 178 | 177 | 179 | 182 | 188 | 195 | 203 | 213 |
| Other Crops | 180 | 182 | 182 | 183 | 186 | 188 | 190 | 193 | 195 | 198 | 200 |
| Livestock | 2,724 | 2,580 | 2,692 | 2,717 | 2,651 | 2,596 | 2,592 | 2,616 | 2,660 | 2,654 | 2,631 |
| Cattle and Calves | 1,085 | 942 | 1,034 | 1,050 | 1,007 | 975 | 950 | 924 | 921 | 933 | 939 |
| Hogs | 498 | 469 | 511 | 526 | 503 | 478 | 497 | 543 | 585 | 564 | 529 |
| Dairy | 236 | 228 | 214 | 206 | 197 | 189 | 181 | 173 | 166 | 159 | 153 |
| Broilers | 409 | 420 | 404 | 400 | 400 | 401 | 402 | 406 | 409 | 410 | 413 |
| Turkeys | 310 | 330 | 343 | 355 | 365 | 375 | 383 | 391 | 399 | 405 | 412 |
| Chicken Eggs | 102 | 105 | 99 | 94 | 90 | 88 | 88 | 88 | 88 | 89 | 90 |
| Other Livestock/Poultry | 85 | 86 | 87 | 88 | 89 | 90 | 91 | 92 | 93 | 93 | 94 |
| Total Receipts | 5,124 | 4,984 | 5,028 | 5,045 | 5,032 | 5,013 | 5,038 | 5,104 | 5,199 | 5,250 | 5,283 |

Missouri Production Expenses

| | 1992 | 1993 | 1994 | 1995 | 1996 | 1997 | 1998 | 1999 | 2000 | 2001 | 2002 |
|----------------------------|-------|-------|-------|-------|-------|-------|-------|-------|-------|-------|-------|
| (Million Dollars) | | | | | | | | | | | |
| Farm Origin | 1,074 | 1,125 | 1,186 | 1,142 | 1,187 | 1,222 | 1,131 | 1,167 | 1,190 | 1,271 | 1,242 |
| Purchased Feed | 825 | 847 | 891 | 846 | 846 | 841 | 714 | 734 | 744 | 788 | 773 |
| Purchased Livestock | 100 | 120 | 138 | 141 | 161 | 186 | 207 | 227 | 234 | 248 | 236 |
| Seed | 149 | 159 | 157 | 155 | 180 | 194 | 210 | 205 | 212 | 235 | 232 |
| Manufactured Inputs | 736 | 759 | 787 | 831 | 927 | 930 | 940 | 882 | 959 | 939 | 864 |
| Fertilizer and Lime | 332 | 330 | 338 | 365 | 409 | 404 | 424 | 380 | 411 | 406 | 368 |
| Pesticides | 191 | 201 | 229 | 247 | 292 | 288 | 296 | 284 | 285 | 279 | 263 |
| Petroleum Fuels/Oils | 161 | 168 | 167 | 164 | 170 | 176 | 163 | 160 | 208 | 188 | 174 |
| Electricity | 51 | 60 | 53 | 55 | 56 | 62 | 56 | 59 | 56 | 66 | 58 |
| Other Intermediate | 802 | 862 | 917 | 930 | 960 | 992 | 1,060 | 1,103 | 1,102 | 1,136 | 1,144 |
| Repairs & Maintenance | 325 | 335 | 331 | 364 | 372 | 367 | 381 | 407 | 419 | 430 | 425 |
| Mach. Hire & Cust. Work | 73 | 86 | 92 | 89 | 90 | 94 | 108 | 104 | 112 | 103 | 109 |
| Mrketing, Storage & Trans | 64 | 69 | 86 | 71 | 84 | 81 | 85 | 92 | 91 | 91 | 82 |
| Contract Labor | 12 | 9 | 11 | 10 | 16 | 10 | 11 | 14 | 18 | 12 | 18 |
| Miscellaneous | 328 | 363 | 397 | 396 | 398 | 439 | 475 | 486 | 461 | 500 | 509 |
| Other Overhead | 1,732 | 1,673 | 1,719 | 1,744 | 1,932 | 1,913 | 1,984 | 1,969 | 2,111 | 2,072 | 1,953 |
| Capital Consumption | 684 | 686 | 703 | 729 | 740 | 743 | 761 | 779 | 806 | 833 | 855 |
| Interest | 389 | 377 | 383 | 429 | 470 | 481 | 502 | 505 | 542 | 491 | 445 |
| Property Taxes | 112 | 116 | 122 | 120 | 122 | 126 | 133 | 133 | 138 | 136 | 138 |
| Net Rent - Nonoperators | 333 | 262 | 285 | 241 | 381 | 328 | 313 | 293 | 375 | 343 | 255 |
| Vehicle Reg./Licensing | 18 | 18 | 19 | 21 | 18 | 21 | 22 | 19 | 24 | 25 | 25 |
| Employee Compens. | 196 | 214 | 207 | 204 | 202 | 214 | 251 | 239 | 225 | 246 | 235 |
| Total Expenses | 4,344 | 4,418 | 4,608 | 4,646 | 5,006 | 5,057 | 5,114 | 5,121 | 5,362 | 5,418 | 5,203 |

Missouri Production Expenses

| | 2003 | 2004 | 2005 | 2006 | 2007 | 2008 | 2009 | 2010 | 2011 | 2012 | 2013 |
|----------------------------|-------|-------|-------|-------|-------|-------|-------|-------|-------|-------|-------|
| (Million Dollars) | | | | | | | | | | | |
| Farm Origin | 1,339 | 1,346 | 1,323 | 1,326 | 1,338 | 1,353 | 1,366 | 1,386 | 1,411 | 1,427 | 1,436 |
| Purchased Feed | 818 | 823 | 786 | 782 | 795 | 811 | 815 | 820 | 831 | 846 | 856 |
| Purchased Livestock | 257 | 259 | 272 | 278 | 274 | 270 | 275 | 286 | 296 | 292 | 287 |
| Seed | 264 | 264 | 265 | 266 | 270 | 273 | 276 | 279 | 284 | 288 | 293 |
| Manufactured Inputs | 928 | 937 | 918 | 918 | 931 | 942 | 952 | 964 | 981 | 999 | 1,019 |
| Fertilizer and Lime | 389 | 409 | 382 | 376 | 380 | 384 | 387 | 390 | 394 | 401 | 407 |
| Pesticides | 274 | 281 | 291 | 296 | 300 | 303 | 307 | 311 | 316 | 321 | 326 |
| Petroleum Fuels/Oils | 201 | 188 | 186 | 187 | 191 | 194 | 196 | 200 | 205 | 210 | 216 |
| Electricity | 64 | 59 | 59 | 59 | 60 | 61 | 62 | 64 | 66 | 67 | 70 |
| Other Intermediate | 1,151 | 1,158 | 1,165 | 1,173 | 1,186 | 1,200 | 1,211 | 1,221 | 1,234 | 1,250 | 1,265 |
| Repairs & Maintenance | 426 | 433 | 438 | 443 | 449 | 456 | 463 | 468 | 473 | 478 | 484 |
| Mach. Hire & Cust. Work | 109 | 110 | 112 | 113 | 115 | 117 | 118 | 120 | 122 | 124 | 126 |
| Mrkting, Storage & Trans | 93 | 90 | 92 | 93 | 93 | 93 | 93 | 93 | 94 | 96 | 97 |
| Contract Labor | 15 | 17 | 17 | 17 | 17 | 17 | 18 | 18 | 18 | 18 | 19 |
| Miscellaneous | 507 | 508 | 507 | 508 | 512 | 516 | 519 | 522 | 527 | 533 | 539 |
| Other Overhead | 2,002 | 2,026 | 2,069 | 2,082 | 2,087 | 2,113 | 2,144 | 2,152 | 2,163 | 2,178 | 2,196 |
| Capital Consumption | 839 | 845 | 844 | 845 | 849 | 852 | 856 | 861 | 866 | 872 | 878 |
| Interest | 433 | 474 | 503 | 505 | 501 | 521 | 541 | 540 | 541 | 544 | 549 |
| Property Taxes | 139 | 141 | 143 | 143 | 145 | 146 | 148 | 149 | 150 | 152 | 153 |
| Net Rent - Nonoperators | 327 | 301 | 314 | 321 | 322 | 321 | 325 | 327 | 327 | 329 | 331 |
| Vehicle Reg./Licensing | 26 | 26 | 27 | 27 | 28 | 28 | 29 | 29 | 30 | 30 | 31 |
| Employee Compens. | 238 | 239 | 240 | 240 | 242 | 244 | 246 | 247 | 249 | 252 | 254 |
| Total Expenses | 5,420 | 5,467 | 5,475 | 5,499 | 5,542 | 5,608 | 5,673 | 5,723 | 5,788 | 5,853 | 5,916 |

Missouri Crop Production and Prices

| | | 1992 | 1993 | 1994 | 1995 | 1996 | 1997 | 1998 | 1999 | 2000 | 2001 | 2002 |
|--------------------------------------|-------|---------|---------|---------|---------|---------|---------|---------|---------|---------|---------|---------|
| Planted (Thousand Acres) | | | | | | | | | | | | |
| Corn | | 2,500 | 2,200 | 2,400 | 1,650 | 2,650 | 2,700 | 2,650 | 2,650 | 2,850 | 2,700 | 2,800 |
| Soybeans | | 4,300 | 4,250 | 4,600 | 4,600 | 4,100 | 4,900 | 5,100 | 5,400 | 5,150 | 4,950 | 5,050 |
| Wheat | | 1,500 | 1,650 | 1,250 | 1,350 | 1,600 | 1,150 | 1,350 | 980 | 1,050 | 900 | 900 |
| Sorghum | | 670 | 600 | 570 | 520 | 580 | 420 | 330 | 320 | 280 | 230 | 190 |
| Cotton | | 335 | 345 | 352 | 462 | 390 | 395 | 370 | 380 | 400 | 405 | 380 |
| Rice | | 117 | 105 | 131 | 119 | 97 | 122 | 145 | 186 | 170 | 211 | 190 |
| Harvested | | | | | | | | | | | | |
| Corn | | 2,400 | 1,850 | 2,300 | 1,470 | 2,540 | 2,600 | 2,500 | 2,550 | 2,770 | 2,600 | 2,700 |
| Soybeans | | 4,250 | 3,600 | 4,560 | 4,500 | 4,050 | 4,850 | 5,000 | 5,350 | 5,000 | 4,900 | 5,000 |
| Wheat | | 1,350 | 1,400 | 1,120 | 1,230 | 1,250 | 1,080 | 1,250 | 920 | 950 | 760 | 760 |
| Sorghum | | 640 | 540 | 550 | 490 | 560 | 400 | 320 | 310 | 270 | 220 | 185 |
| Cotton | | 328 | 335 | 345 | 453 | 385 | 390 | 357 | 377 | 388 | 400 | 368 |
| Rice | | 112 | 93 | 124 | 112 | 95 | 117 | 143 | 184 | 169 | 207 | 182 |
| Hay | | 3,600 | 3,550 | 3,450 | 3,450 | 3,880 | 3,650 | 3,650 | 3,650 | 3,720 | 4,050 | 4,260 |
| Yields (Per Harvested Acre) | | | | | | | | | | | | |
| Corn | Bu | 135.0 | 90.0 | 118.0 | 102.0 | 134.0 | 115.0 | 114.0 | 97.0 | 143.0 | 133.0 | 105.0 |
| Soybeans | Bu | 38.0 | 33.0 | 38.0 | 29.5 | 37.0 | 36.0 | 34.0 | 27.5 | 35.0 | 38.0 | 34.0 |
| Wheat | Bu | 48.0 | 38.0 | 45.0 | 39.0 | 39.0 | 54.0 | 46.0 | 48.0 | 52.0 | 54.0 | 45.0 |
| Sorghum | Bu | 97.0 | 73.0 | 90.0 | 73.0 | 91.0 | 92.0 | 83.0 | 71.0 | 92.0 | 94.0 | 85.0 |
| Cotton | Lb | 792 | 539 | 856 | 544 | 737 | 695 | 471 | 601 | 668 | 834 | 796 |
| Rice | Lb | 4,800 | 4,900 | 5,200 | 5,300 | 5,551 | 5,300 | 5,200 | 5,400 | 5,700 | 6,000 | 6,050 |
| Hay | Tons | 1.88 | 2.07 | 2.02 | 2.06 | 1.87 | 2.01 | 2.11 | 1.98 | 1.79 | 1.94 | 1.84 |
| Production (Thousands) | | | | | | | | | | | | |
| Corn | Bu | 324,000 | 166,500 | 271,400 | 149,940 | 340,360 | 299,000 | 285,000 | 247,350 | 396,110 | 345,800 | 283,500 |
| Soybeans | Bu | 161,500 | 118,800 | 173,280 | 132,750 | 149,850 | 174,600 | 170,000 | 147,125 | 175,000 | 186,200 | 170,000 |
| Wheat | Bu | 64,800 | 53,200 | 50,400 | 47,970 | 48,750 | 58,320 | 57,500 | 44,160 | 49,400 | 41,040 | 34,200 |
| Sorghum | Bu | 62,080 | 39,420 | 49,500 | 35,770 | 50,960 | 36,800 | 26,560 | 22,010 | 24,840 | 20,680 | 15,725 |
| Cotton | Bales | 541 | 376 | 615 | 513 | 591 | 565 | 350 | 472 | 540 | 695 | 610 |
| Rice | Cwt | 5,376 | 4,557 | 6,448 | 5,936 | 5,273 | 6,201 | 7,436 | 9,936 | 9,633 | 12,420 | 11,011 |
| Hay | Tons | 6,780 | 7,335 | 6,960 | 7,110 | 7,270 | 7,340 | 7,703 | 7,225 | 6,657 | 7,853 | 7,840 |
| Farm Price (Dollars per Unit) | | | | | | | | | | | | |
| Corn | Bu | 2.11 | 2.58 | 2.25 | 3.48 | 2.77 | 2.45 | 1.92 | 1.96 | 1.78 | 1.96 | 2.45 |
| Soybeans | Bu | 5.45 | 6.36 | 5.43 | 6.84 | 7.29 | 6.39 | 4.90 | 4.67 | 4.55 | 4.32 | 5.54 |
| Wheat | Bu | 3.17 | 2.67 | 3.12 | 3.84 | 4.12 | 3.09 | 2.31 | 2.10 | 2.28 | 2.42 | 3.15 |
| Sorghum | Bu | 1.87 | 2.29 | 2.00 | 3.10 | 2.37 | 2.20 | 1.71 | 1.67 | 1.76 | 1.94 | 2.36 |
| Cotton | Lb | 0.53 | 0.53 | 0.66 | 0.70 | 0.69 | 0.69 | 0.69 | 0.47 | 0.56 | 0.30 | 0.44 |
| Rice | Cwt | 5.91 | 8.03 | 6.72 | 9.06 | 10.30 | 10.00 | 8.75 | 5.60 | 5.40 | 3.70 | 3.55 |
| Hay | Ton | 66.00 | 63.50 | 65.00 | 67.00 | 69.50 | 71.00 | 68.00 | 72.00 | 70.50 | 75.00 | 67.50 |
| Land Use (Thousand Acres) | | | | | | | | | | | | |
| Planted | | 13,022 | 12,700 | 12,753 | 12,151 | 13,297 | 13,337 | 13,595 | 13,566 | 13,620 | 13,446 | 13,770 |
| Annual Idled | | 320 | 622 | 197 | 469 | 0 | 0 | 0 | 0 | 0 | 0 | 0 |
| CRP | | 1,625 | 1,727 | 1,727 | 1,685 | 1,655 | 1,608 | 1,363 | 1,359 | 1,427 | 1,541 | 1,552 |
| Total | | 14,967 | 15,049 | 14,677 | 14,305 | 14,952 | 14,945 | 14,958 | 14,925 | 15,047 | 14,987 | 15,322 |

Missouri Crop Production and Prices

| | | 2003 | 2004 | 2005 | 2006 | 2007 | 2008 | 2009 | 2010 | 2011 | 2012 | 2013 |
|----------------------|-------|---------|---------|---------|---------|---------|---------|---------|---------|---------|---------|---------|
| Planted | | | | | | | | | | | | |
| (Thousand Acres) | | | | | | | | | | | | |
| Corn | | 2,900 | 2,897 | 2,913 | 2,907 | 2,915 | 2,922 | 2,924 | 2,927 | 2,933 | 2,937 | 2,936 |
| Soybeans | | 5,000 | 4,997 | 4,963 | 4,960 | 4,962 | 4,938 | 4,933 | 4,924 | 4,920 | 4,920 | 4,930 |
| Wheat | | 960 | 1,050 | 1,013 | 1,015 | 1,016 | 1,017 | 1,021 | 1,024 | 1,027 | 1,030 | 1,034 |
| Sorghum | | 215 | 197 | 199 | 198 | 195 | 192 | 189 | 185 | 182 | 179 | 176 |
| Cotton | | 400 | 406 | 417 | 420 | 421 | 425 | 425 | 424 | 425 | 427 | 428 |
| Rice | | 176 | 194 | 187 | 181 | 177 | 176 | 175 | 175 | 174 | 174 | 173 |
| Harvested | | | | | | | | | | | | |
| Corn | | 2,800 | 2,791 | 2,805 | 2,800 | 2,808 | 2,814 | 2,815 | 2,819 | 2,825 | 2,828 | 2,827 |
| Soybeans | | 4,940 | 4,943 | 4,911 | 4,907 | 4,910 | 4,886 | 4,881 | 4,873 | 4,868 | 4,869 | 4,878 |
| Wheat | | 870 | 911 | 878 | 880 | 881 | 882 | 885 | 888 | 891 | 893 | 897 |
| Sorghum | | 210 | 191 | 193 | 192 | 189 | 186 | 183 | 180 | 177 | 174 | 171 |
| Cotton | | 390 | 397 | 407 | 411 | 412 | 415 | 416 | 415 | 415 | 417 | 419 |
| Rice | | 171 | 190 | 183 | 177 | 174 | 172 | 172 | 171 | 171 | 170 | 170 |
| Hay | | 4,250 | 4,127 | 4,090 | 4,077 | 4,073 | 4,073 | 4,078 | 4,083 | 4,089 | 4,096 | 4,104 |
| Yields | | | | | | | | | | | | |
| (Per Harvested Acre) | | | | | | | | | | | | |
| Corn | Bu | 108.0 | 125.5 | 127.4 | 129.2 | 131.0 | 132.7 | 134.5 | 136.3 | 138.0 | 139.8 | 141.6 |
| Soybeans | Bu | 29.0 | 36.6 | 36.9 | 37.2 | 37.5 | 37.7 | 38.0 | 38.3 | 38.5 | 38.8 | 39.0 |
| Wheat | Bu | 61.0 | 54.7 | 55.3 | 55.9 | 56.5 | 57.1 | 57.7 | 58.3 | 58.9 | 59.4 | 60.0 |
| Sorghum | Bu | 77.0 | 89.2 | 89.7 | 90.3 | 90.8 | 91.3 | 91.8 | 92.2 | 92.7 | 93.2 | 93.6 |
| Cotton | Lb | 874 | 779 | 784 | 789 | 794 | 798 | 802 | 807 | 811 | 814 | 818 |
| Rice | Lb | 6,131 | 6,106 | 6,152 | 6,197 | 6,241 | 6,283 | 6,323 | 6,364 | 6,404 | 6,444 | 6,483 |
| Hay | Tons | 1.92 | 1.94 | 1.95 | 1.95 | 1.96 | 1.97 | 1.97 | 1.98 | 1.98 | 1.99 | 1.99 |
| Production | | | | | | | | | | | | |
| (Thousands) | | | | | | | | | | | | |
| Corn | Bu | 302,400 | 350,227 | 357,299 | 361,762 | 367,692 | 373,587 | 378,737 | 384,179 | 389,889 | 395,382 | 400,230 |
| Soybeans | Bu | 143,260 | 181,055 | 181,277 | 182,527 | 183,981 | 184,407 | 185,522 | 186,454 | 187,520 | 188,762 | 190,324 |
| Wheat | Bu | 53,070 | 49,837 | 48,566 | 49,225 | 49,812 | 50,348 | 51,085 | 51,736 | 52,421 | 53,093 | 53,804 |
| Sorghum | Bu | 16,170 | 17,025 | 17,326 | 17,326 | 17,200 | 16,998 | 16,783 | 16,589 | 16,404 | 16,208 | 15,976 |
| Cotton | Bales | 710 | 645 | 666 | 675 | 681 | 690 | 695 | 697 | 701 | 708 | 713 |
| Rice | Cwt | 10,484 | 11,586 | 11,254 | 10,959 | 10,840 | 10,819 | 10,855 | 10,888 | 10,933 | 10,970 | 10,990 |
| Hay | Tons | 8,168 | 8,018 | 7,971 | 7,969 | 7,982 | 8,004 | 8,035 | 8,067 | 8,099 | 8,135 | 8,173 |
| Farm Price | | | | | | | | | | | | |
| (Dollars per Unit) | | | | | | | | | | | | |
| Corn | Bu | 2.44 | 2.39 | 2.37 | 2.38 | 2.42 | 2.43 | 2.46 | 2.49 | 2.51 | 2.53 | 2.55 |
| Soybeans | Bu | 7.34 | 5.30 | 5.05 | 5.03 | 5.19 | 5.16 | 5.14 | 5.19 | 5.25 | 5.33 | 5.39 |
| Wheat | Bu | 2.98 | 2.83 | 2.73 | 2.74 | 2.82 | 2.88 | 2.93 | 2.97 | 3.02 | 3.07 | 3.12 |
| Sorghum | Bu | 2.38 | 2.12 | 2.16 | 2.18 | 2.21 | 2.22 | 2.25 | 2.27 | 2.29 | 2.32 | 2.34 |
| Cotton | Lb | 0.63 | 0.58 | 0.55 | 0.53 | 0.53 | 0.53 | 0.53 | 0.55 | 0.56 | 0.58 | 0.60 |
| Rice | Cwt | 6.87 | 5.82 | 5.25 | 5.44 | 5.54 | 5.59 | 5.66 | 5.71 | 5.79 | 5.89 | 6.02 |
| Hay | Ton | 62.46 | 61.32 | 61.08 | 60.99 | 61.32 | 61.87 | 62.43 | 63.05 | 63.86 | 64.69 | 65.31 |
| Land Use | | | | | | | | | | | | |
| (Thousand Acres) | | | | | | | | | | | | |
| Planted | | 13,901 | 13,868 | 13,782 | 13,758 | 13,761 | 13,743 | 13,745 | 13,743 | 13,750 | 13,764 | 13,781 |
| Annual Idled | | 0 | 0 | 0 | 0 | 0 | 0 | 0 | 0 | 0 | 0 | 0 |
| CRP | | 1,551 | 1,592 | 1,637 | 1,683 | 1,660 | 1,706 | 1,728 | 1,751 | 1,751 | 1,751 | 1,751 |
| Total | | 15,452 | 15,459 | 15,419 | 15,441 | 15,421 | 15,448 | 15,473 | 15,494 | 15,501 | 15,515 | 15,533 |

Cattle and Calves

| | 1992 | 1993 | 1994 | 1995 | 1996 | 1997 | 1998 | 1999 | 2000 | 2001 | 2002 |
|----------------------|-------------------|-------|-------|-------|-------|-------|-------|-------|-------|-------|-------|
| Jan 1 | (Thousand Head) | | | | | | | | | | |
| All Cattle & Calves | 4,450 | 4,550 | 4,700 | 4,600 | 4,650 | 4,550 | 4,350 | 4,400 | 4,350 | 4,250 | 4,350 |
| Beef Cows | 2,030 | 2,060 | 2,200 | 2,145 | 2,185 | 2,140 | 2,045 | 2,065 | 2,062 | 2,070 | 2,060 |
| Calves Born | 2,100 | 2,170 | 2,160 | 2,170 | 2,170 | 2,090 | 2,070 | 2,070 | 2,060 | 2,060 | 2,090 |
| Inshipments | 40 | 40 | 40 | 40 | 40 | 40 | 40 | 40 | 40 | 40 | 36 |
| Marketings | | | | | | | | | | | |
| Cattle | 920 | 752 | 1,057 | 867 | 968 | 1,003 | 783 | 950 | 965 | 790 | 827 |
| Calves | 895 | 1,060 | 1,020 | 1,080 | 1,120 | 1,140 | 1,080 | 1,008 | 1,038 | 1,000 | 939 |
| Farm Slaughter | 10 | 8 | 8 | 8 | 7 | 7 | 7 | 7 | 7 | 5 | 5 |
| Deaths | | | | | | | | | | | |
| Cattle | 70 | 75 | 70 | 65 | 70 | 60 | 60 | 70 | 65 | 70 | 75 |
| Calves | 145 | 165 | 145 | 140 | 145 | 120 | 130 | 125 | 125 | 135 | 130 |
| | (Million Pounds) | | | | | | | | | | |
| Marketings | 1,135 | 1,041 | 1,307 | 1,168 | 1,271 | 1,310 | 1,096 | 1,204 | 1,229 | 1,086 | 1,060 |
| | (Dollars per Cwt) | | | | | | | | | | |
| Prices | | | | | | | | | | | |
| Cattle, Missouri Avg | 72.7 | 75.5 | 67.3 | 55.9 | 48.8 | 64.4 | 62.3 | 65.6 | 76.0 | 76.2 | 69.4 |
| Calves, Missouri Avg | 88.3 | 92.8 | 85.1 | 68.2 | 53.9 | 81.8 | 79.5 | 85.1 | 102.0 | 99.5 | 92.3 |

Hogs and Pigs

| | 1992 | 1993 | 1994 | 1995 | 1996 | 1997 | 1998 | 1999 | 2000 | 2001 | 2002 |
|-----------------------|-------------------|-------|-------|-------|-------|-------|-------|-------|-------|-------|-------|
| Dec 1, Preceding Year | (Thousand Head) | | | | | | | | | | |
| Breeding | 380 | 375 | 435 | 460 | 480 | 450 | 440 | 400 | 410 | 380 | 380 |
| Total Market | 2,320 | 2,475 | 2,565 | 3,040 | 3,070 | 3,000 | 3,110 | 2,900 | 2,740 | 2,520 | 2,620 |
| Pig Crop | 4,985 | 5,350 | 6,215 | 6,802 | 6,517 | 6,924 | 6,783 | 6,587 | 6,248 | 6,321 | 6,214 |
| Inshipments | 132 | 247 | 303 | 519 | 823 | 1,200 | 1,600 | 1,550 | 1,570 | 1,590 | 1,800 |
| Marketings | 4,765 | 5,242 | 5,753 | 6,944 | 7,063 | 7,672 | 8,331 | 7,935 | 7,726 | 7,394 | 7,663 |
| Farm Slaughter | 11 | 2 | 2 | 2 | 2 | 2 | 2 | 2 | 2 | 2 | 1 |
| Deaths | 171 | 203 | 263 | 325 | 375 | 350 | 300 | 350 | 340 | 415 | 400 |
| | (Million Pounds) | | | | | | | | | | |
| Production | 1,073 | 1,177 | 1,286 | 1,442 | 1,333 | 1,411 | 1,421 | 1,238 | 1,215 | 1,188 | 1,189 |
| | (Dollars per Cwt) | | | | | | | | | | |
| Prices | | | | | | | | | | | |
| Missouri Average | 41.00 | 44.70 | 38.60 | 39.10 | 50.40 | 50.90 | 32.40 | 27.50 | 38.60 | 41.30 | 30.10 |

Cattle and Calves

| | 2003 | 2004 | 2005 | 2006 | 2007 | 2008 | 2009 | 2010 | 2011 | 2012 | 2013 |
|----------------------|-------------------|-------|-------|-------|-------|-------|-------|-------|-------|-------|-------|
| Jan 1 | (Thousand Head) | | | | | | | | | | |
| All Cattle & Calves | 4,500 | 4,350 | 4,312 | 4,322 | 4,396 | 4,490 | 4,583 | 4,667 | 4,743 | 4,800 | 4,816 |
| Beef Cows | 2,116 | 2,125 | 2,112 | 2,121 | 2,156 | 2,207 | 2,233 | 2,257 | 2,287 | 2,311 | 2,318 |
| Calves Born | 2,080 | 2,109 | 2,090 | 2,093 | 2,119 | 2,162 | 2,181 | 2,199 | 2,222 | 2,241 | 2,244 |
| Inshipments | 36 | 36 | 36 | 36 | 36 | 36 | 36 | 36 | 36 | 36 | 36 |
| Marketings | | | | | | | | | | | |
| Cattle | 981 | 860 | 858 | 861 | 873 | 891 | 909 | 924 | 939 | 950 | 951 |
| Calves | 1,073 | 1,111 | 1,050 | 984 | 975 | 997 | 1,004 | 1,012 | 1,038 | 1,084 | 1,121 |
| Farm Slaughter | 5 | 5 | 5 | 5 | 5 | 5 | 5 | 5 | 5 | 5 | 5 |
| Deaths | | | | | | | | | | | |
| Cattle | 78 | 75 | 74 | 75 | 76 | 77 | 79 | 80 | 82 | 83 | 83 |
| Calves | 129 | 131 | 130 | 130 | 132 | 134 | 136 | 137 | 138 | 139 | 140 |
| | (Million Pounds) | | | | | | | | | | |
| Marketings | 1,257 | 1,181 | 1,150 | 1,121 | 1,127 | 1,151 | 1,168 | 1,183 | 1,207 | 1,238 | 1,256 |
| | (Dollars per Cwt) | | | | | | | | | | |
| Prices | | | | | | | | | | | |
| Cattle, Missouri Avg | 77.9 | 73.2 | 81.0 | 84.1 | 81.7 | 78.0 | 75.0 | 72.2 | 70.6 | 69.9 | 69.5 |
| Calves, Missouri Avg | 100.3 | 91.3 | 104.9 | 109.4 | 102.1 | 96.0 | 92.1 | 88.1 | 86.0 | 84.9 | 84.1 |

Hogs and Pigs

| | 2003 | 2004 | 2005 | 2006 | 2007 | 2008 | 2009 | 2010 | 2011 | 2012 | 2013 |
|-----------------------|-------------------|-------|-------|-------|-------|-------|-------|-------|-------|-------|-------|
| Dec 1, Preceding Year | (Thousand Head) | | | | | | | | | | |
| Breeding | 360 | 340 | 322 | 320 | 323 | 320 | 311 | 305 | 306 | 312 | 312 |
| Total Market | 2,590 | 2,610 | 2,494 | 2,374 | 2,368 | 2,411 | 2,422 | 2,382 | 2,349 | 2,368 | 2,438 |
| Pig Crop | 6,099 | 5,784 | 5,537 | 5,570 | 5,677 | 5,682 | 5,576 | 5,521 | 5,602 | 5,777 | 5,834 |
| Inshipments | 1,850 | 1,875 | 1,900 | 1,925 | 1,950 | 1,975 | 2,000 | 2,025 | 2,050 | 2,075 | 2,100 |
| Marketings | 7,555 | 7,420 | 7,201 | 7,138 | 7,220 | 7,288 | 7,263 | 7,221 | 7,265 | 7,410 | 7,531 |
| Farm Slaughter | 1 | 1 | 1 | 1 | 1 | 1 | 1 | 1 | 1 | 1 | 1 |
| Deaths | 393 | 372 | 356 | 359 | 365 | 366 | 359 | 355 | 361 | 372 | 376 |
| | (Million Pounds) | | | | | | | | | | |
| Production | 1,197 | 1,165 | 1,113 | 1,100 | 1,125 | 1,146 | 1,144 | 1,137 | 1,153 | 1,195 | 1,230 |
| | (Dollars per Cwt) | | | | | | | | | | |
| Prices | | | | | | | | | | | |
| Missouri Average | 34.65 | 33.57 | 37.11 | 38.36 | 36.54 | 34.72 | 35.99 | 38.94 | 41.28 | 39.20 | 36.52 |

Poultry

| | 1992 | 1993 | 1994 | 1995 | 1996 | 1997 | 1998 | 1999 | 2000 | 2001 | 2002 |
|-------------------------|-------------------|-------|-------|-------|-------|-------|-------|-------|-------|-------|-------|
| | (Million Head) | | | | | | | | | | |
| Broiler Slaughter * | 126.0 | 138.0 | 153.1 | 190.6 | 246.3 | 250.0 | 255.0 | 249.7 | 240.0 | | |
| Turkey Slaughter | 18.5 | 21.0 | 20.5 | 21.0 | 20.5 | 21.0 | 22.0 | 22.0 | 23.0 | 24.0 | 25.5 |
| Egg Layers on Farms | 6.6 | 6.6 | 6.7 | 6.7 | 6.6 | 6.7 | 6.6 | 6.4 | 6.1 | 6.9 | 6.9 |
| | (Million Pounds) | | | | | | | | | | |
| Broiler Production * | 542 | 580 | 658 | 801 | 1,059 | 1,075 | 1,097 | 1,124 | 1,080 | | |
| Turkey Production | 389 | 447 | 478 | 515 | 539 | 563 | 598 | 616 | 619 | 660 | 783 |
| Egg Production (Dozens) | 1,631 | 1,644 | 1,713 | 1,705 | 1,674 | 1,719 | 1,732 | 1,690 | 1,614 | 1,789 | 1,837 |
| | (Cents per Pound) | | | | | | | | | | |
| Broiler Price * | 34.0 | 37.0 | 38.0 | 35.0 | 37.5 | 37.5 | 38.0 | 37.0 | 33.0 | | |
| Turkey Price | 38.0 | 40.0 | 43.0 | 42.0 | 43.0 | 40.0 | 40.0 | 45.0 | 44.0 | 41.0 | 36.0 |
| Egg Price (Dozen) | 41.0 | 45.8 | 43.3 | 48.9 | 66.3 | 59.2 | 53.1 | 51.6 | 52.0 | 50.7 | 49.7 |

* Data discontinued after 2000 to avoid disclosing individual operations. Broiler receipts show up in the livestock receipts estimate.

Dairy

| | 1992 | 1993 | 1994 | 1995 | 1996 | 1997 | 1998 | 1999 | 2000 | 2001 | 2002 |
|--------------------|-------------------|--------|--------|--------|--------|--------|--------|--------|--------|--------|--------|
| | (Thousand Head) | | | | | | | | | | |
| Milk Cows on Farms | 208 | 209 | 197 | 190 | 182 | 177 | 170 | 159 | 154 | 145 | 137 |
| | (Pounds) | | | | | | | | | | |
| Production Per Cow | 14,284 | 13,589 | 13,782 | 14,158 | 13,423 | 13,345 | 13,924 | 14,069 | 14,662 | 13,441 | 14,204 |
| | (Million Pounds) | | | | | | | | | | |
| Milk Production | 2,971 | 2,840 | 2,715 | 2,690 | 2,443 | 2,362 | 2,367 | 2,237 | 2,258 | 1,949 | 1,946 |
| | (Dollars per Cwt) | | | | | | | | | | |
| All Milk Price | 13.00 | 12.80 | 13.20 | 13.00 | 15.10 | 13.70 | 15.60 | 14.70 | 12.10 | 14.90 | 12.30 |

Poultry

| | 2003 | 2004 | 2005 | 2006 | 2007 | 2008 | 2009 | 2010 | 2011 | 2012 | 2013 |
|-------------------------|-------|-------|-------|-------|-------|-------|-------|-------|-------|-------|-------|
| (Thousand Head) | | | | | | | | | | | |
| Broiler Slaughter * | | | | | | | | | | | |
| Turkey Slaughter | 26.5 | 27.3 | 28.0 | 28.5 | 28.9 | 29.2 | 29.5 | 29.7 | 29.8 | 29.9 | 30.0 |
| Egg Layers on Farms | 6.8 | 6.9 | 7.0 | 7.0 | 6.9 | 6.9 | 6.9 | 6.9 | 6.9 | 6.8 | 6.8 |
| (Million Pounds) | | | | | | | | | | | |
| Broiler Production * | | | | | | | | | | | |
| Turkey Production | 822 | 854 | 885 | 911 | 934 | 953 | 970 | 986 | 1,000 | 1,014 | 1,027 |
| Egg Production (Dozens) | 1,859 | 1,888 | 1,911 | 1,920 | 1,924 | 1,927 | 1,932 | 1,939 | 1,946 | 1,954 | 1,963 |
| (Cents per Pound) | | | | | | | | | | | |
| Broiler Price * | | | | | | | | | | | |
| Turkey Price | 37.7 | 38.7 | 38.8 | 38.9 | 39.1 | 39.3 | 39.4 | 39.6 | 39.9 | 40.0 | 40.2 |
| Egg Price (Dozen) | 66.0 | 66.9 | 62.3 | 58.4 | 56.2 | 55.1 | 54.8 | 54.7 | 54.6 | 54.7 | 55.1 |

* Data discontinued after 2000 to avoid disclosing individual operations. Broiler receipts show up in the livestock receipts estimate.

Dairy

| | 2003 | 2004 | 2005 | 2006 | 2007 | 2008 | 2009 | 2010 | 2011 | 2012 | 2013 |
|--------------------|--------|--------|--------|--------|--------|--------|--------|--------|--------|--------|--------|
| (Thousand Head) | | | | | | | | | | | |
| Milk Cows on Farms | 129 | 122 | 115 | 108 | 102 | 96 | 91 | 86 | 81 | 77 | 73 |
| (Pounds) | | | | | | | | | | | |
| Production Per Cow | 14,620 | 14,811 | 14,951 | 15,038 | 15,177 | 15,313 | 15,444 | 15,577 | 15,709 | 15,843 | 15,979 |
| (Million Pounds) | | | | | | | | | | | |
| Milk Production | 1,886 | 1,802 | 1,720 | 1,625 | 1,544 | 1,470 | 1,399 | 1,333 | 1,272 | 1,214 | 1,162 |
| (Dollars per Cwt) | | | | | | | | | | | |
| All Milk Price | 12.69 | 12.84 | 12.69 | 12.89 | 13.02 | 13.15 | 13.21 | 13.27 | 13.34 | 13.44 | 13.55 |